

Q-Tips

A Free Newsletter from



Volume 20 Number 2

Summer 2004

NEW! T27 eXpress, Version 4 *For Access to ClearPath Plus MCP Servers*

KMSystems is pleased to announce the availability of the latest enhancements to the T27 eXpress family of emulators. Version 4 contains more features, functionality and flexibility than ever. With Version 4, each environment can have its own appearance, keyboard configuration, script menu and toolbar. The concept behind these improvements is that each environment can be tailored to a specific host application.

Most host applications are developed independently of each other. Applications employ their own unique keystrokes, appearances and special key sequences that make the application unique. When you use a traditional emulator to operate those applications, most emulators fail to take into account these differences.

The latest enhancement of the T27 eXpress product line, Version 4, stresses the ability of the users, or the site administrator, to configure environments to

the precise application that they are running. With Version 4, if you want to execute an application where F2 performs a special key sequence unique to that application, you record a script of those key sequences and assign the F2 action key to that script. Next, you assign that script to a specific environment and use it whenever you want to employ that host application (you won't necessarily use that same script for other environments).

In a like manner, you can assign toolbars with buttons designed by you, and even make the color and fonts appear as you like for that host application.

Color schemes are not limited to the individual environments. You can also create a color scheme for the eXpress application that is separate from the schemes used for the individual environments.

If you don't need a script or toolbar button for a keyboard function, simply use the visual keyboard configuration to assign the key.

The whole idea of T27 eXpress 4 is to make it as functional and flexible as possible for your needs.

The tried concept of "keep it simple" is incorporated into T27 eXpress 4 to make it a product that you will

T27 eXpress 4 - continued p.2

When in Philly

A look at what to do while at the conference

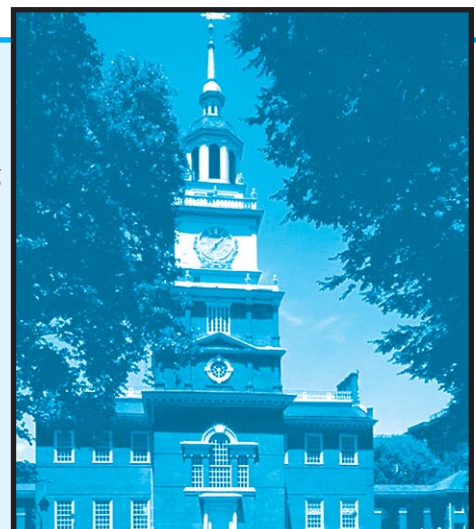
It's that time of year again when UNITE hosts its Annual Technology Conference. This year it is being held in Philadelphia on September 19 - 22 at the Adam's Mark Hotel located approximately 7 ½ miles northeast of Philadelphia's Center City.

As usual, KMSystems will participate at the conference and will have a booth in the Exhibition Center. We are looking forward to

having you stop by and say hello. If you like, we'll even do a little song and dance about our wares.

While in Philadelphia, you might want to take in a few of the sites in Center City, the historical part of the city. The places listed on page 2 with an asterisk beside their names are within walking distance of each other in Center City. See you there!

When in Philly - continued p.3

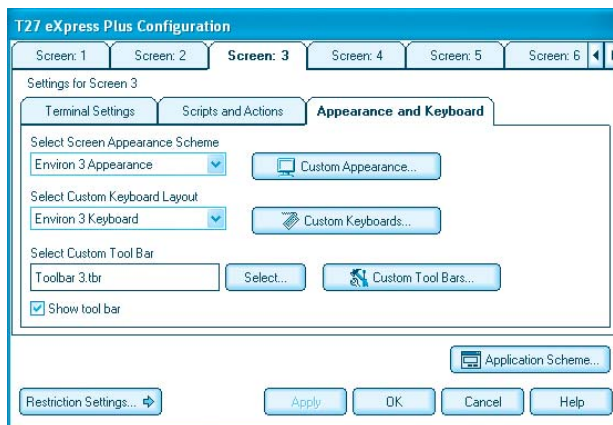


T27 eXpress 4 - continued from p.1

enjoy using, and a product that will make your job more productive. If you have ideas that will make eXpress more useful, we urge you to let us know. We really want your input!!! Also, if you plan to attend the UNITE 2004 Annual Technology Conference in Philadelphia on September 19-22, please come by our booth in the exhibition hall and see a full demonstration.

So, as a tickler to get you interested, here are some of the new features of Version 4:

- Many configuration options are now available from the environment window.
- Most configuration options may now be applied to specific environments within the emulator allowing each host application to operate in a separate screen environment.
- Script management is now managed from the individual environment allowing independence from all other environments.
- Each environment has its own independent script menu and keyboard configuration.
- Environment appearance has been redesigned to allow more color options.
- Separate color configuration is



- now available for the T27 eXpress application independent of environment configurations.
- Toolbar design is now more flexible allowing separate toolbars to be assigned to specific host applications.
- Multiple screen captures can now be sent to a printer or captured to a file.
- Each color configuration (environment or application) has an editable color palette.
- Color configurations now conform to standard Windows® color but not limited (go wild if you want).
- Visual keyboard now allows you to assign both terminal and script activation key functions.
- Keyboard help now shifts automatically when shifting between environments.
- Keyboard layout is now by environment and works similar to the appearance scheme in Version 3.
- Each environment can have different script menus

allowing scripts to be tailored to specific host applications.

- Keyboard configurations can be assigned to specific host applications.
- More drag-and-drop features are added to visual connection configuration.
- Most configuration settings are now independent of registry

- settings as per new Windows standards.
- Most registry settings have been moved to configuration files as per Windows standards.
- Program to convert registry settings from previous version is now available.


If you want more, please let us know what "more" is. Our output is only as good as your input. Please help us continue to make T27 eXpress an even better work in progress.

T27 eXpress is now available in a stand-alone version (T27 eXpress Plus); a version with Windows application development capability (T27 eXpress Pro); a file server or web-based version (T27 eXpress Net) for centralized configuration and control; and a bare essentials version (T27 eXpress IT).

Windows is a registered trademark of the Microsoft Corporation.

Editor/Design:
Bob Moffa, Jr.

Writer:
Lew Holley



Q-Tips is distributed quarterly by KMSystems, Inc., as a means of staying in touch with its customers and maintaining a high level of customer awareness.

Q-Tips is copyrighted © 1983-2004 by KMSystems, Inc. All rights reserved.
Address all correspondence to:

KMSystems, Attn: Q-Tips
3225 Shallowford Road, Suite 1000,
Marietta, GA 30062, U.S.A.
E-mail: sales@kmsys.com

All trademarks and registered trademarks are the property of their respective owners.

<p>Business: Phone: (770) 635-6350 Fax: (770) 635-6351</p> <p>Product Information: Phone: (770) 635-6350 Fax: (770) 635-6351 E-mail: sales@kmsys.com</p>	<p>Technical Support: Phone: (770) 635-6363 Fax: (770) 635-6351 E-mail: support@kmsys.com</p> <p>Web Site: www.kmsys.com</p>
--	--



When in Philly - continued from p.1

Independence Hall *

Chestnut Street between 5th and 6th Streets
Philadelphia, PA 19106
www.nps.gov/inde

The Liberty Bell Center *

Independence Mall
6th and Chestnut Streets
Philadelphia, PA 19106

Congress Hall *

6th and Market Streets
Philadelphia, PA 19106

National Constitution Center *

525 Arch Street
Philadelphia, PA 19106
www.constitutioncenter.org

United States Mint *

151 North Independence Mall East
Philadelphia, PA 19106
www.usmint.gov

The Philadelphia Museum of Art

Benjamin Franklin Parkway and 26th Street
Philadelphia, PA 19130
www.philamuseum.org

The Franklin Institute and Fels Planetarium

222 North 20th Street
Philadelphia, PA 19103
www.fi.edu

Philadelphia Zoo

3400 West Girard Avenue
(34th St. and Girard Ave.),
Philadelphia, PA 19104
www.phillyzoo.org

Rodin Museum

Benjamin Franklin Parkway and 22nd Street
Philadelphia, PA 19101
www.rodinmuseum.org

The Academy of Natural Sciences

1900 Benjamin Franklin Parkway
Philadelphia, PA 19103
www.acnatsci.org

* Within walking distance of each other in Center City.



Did You Know?

You can now get technical support by visiting our web pages and filling out a simple form. When you submit your support request, one of our staff will respond quickly and efficiently. So, now you have three ways to get support: by phone (770-635-6363), by email (support@kmsys.com) or from our web site (www.kmsys.com - take the "Contact KMS Support" link on the left side of the page).

"Input Recall," the ability to retain lines of input that you submit to the host for future recall and use, has been improved in Version 4 of our eXpress products. Now Version 4 retains input from one session (an execution of the eXpress .exe) to another.

KMSystems products are always kept up-to-date with the latest operating systems. We never let a release go by without making sure our products are fully integrated and thoroughly tested.

Ben Franklin said in 1759, "Democracy is two wolves and a lamb voting on what to have for lunch. Liberty is a well-armed lamb contesting the vote!"

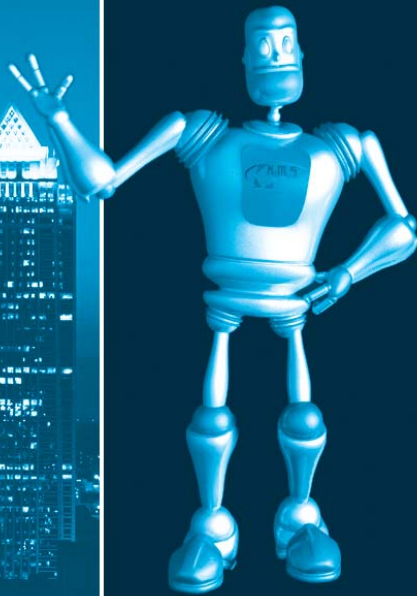
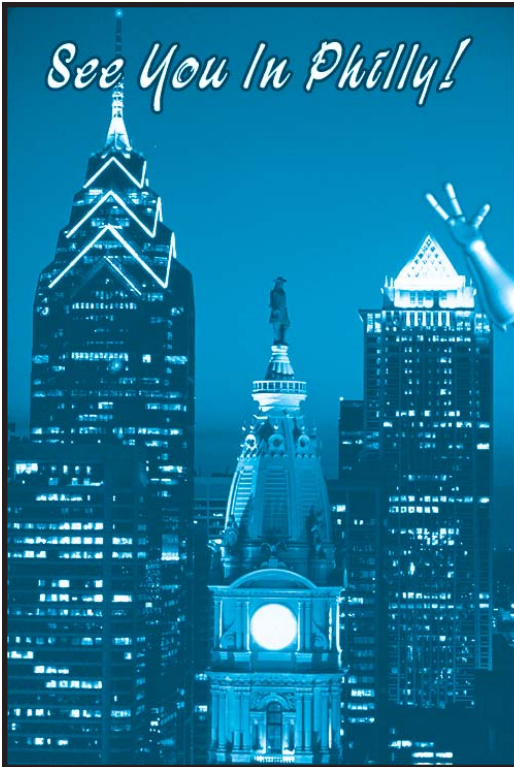
If you are planning a ClearPath machine upgrade and are using I-QU PLUS-1, InfoQuest, Q-LINK or I-QU ReorgComposer, you most likely will need a new product key from KMSystems. So, please plan well in advance of your new machine's arrival. Contact us at (770) 635-6350 and ask to speak to a customer representative. You may also email us at sales@kmsys.com.

Keeping Current

Current KMSystems product levels

<i>Product</i>	<i>Current Version</i>
eQuate	2.1
eQuate Web	2.1
InfoQuest	5R6
I-QU PLUS-1	11R6
I-QU ReorgComposer	3R1
Q-LINK	6R6
QPlex Client	3.1
QPlex Server	1.0
QPlexView	3.1
T27 eXpress (IT, Plus, Net and Pro)	4.0 <- NEW!
UTS eXpress (IT, Plus, Net and Pro)	4.0

See You In Philly!



Come join us at
the 2004 UNITE
Conference in the
City of Brotherly

LOVE



Your Complimentary Copy of...

Q-Tips

A Free Newsletter from
KMSystems
Solutions for Information
Technology Users Worldwide