

Q-Tips

A Free Newsletter from



Volume 18 Number 2

Second Quarter, 2002

New from KMSystems

eXpress IT and eQuate Web

KMSystems is pleased to announce the availability of two new products: eXpress IT and eQuate Web. Both products are built on proven technology and are made available as a result of requests from our customer base. These products provide low-priced emulation and flexible development options for accessing ClearPath applications.

The Price is Right, yet IT Gets the Job Done

When we discovered that our customers had different needs when it comes to emulation, we decided to make a new addition to our eXpress family - an affordable emulator that fits the requirements of most end users. Typical end users execute dozens of host transactions in the course of a day without the need to alter their emulation environments. They want the basic emulator that is setup one time when it is first installed, then left alone. KMSystems offers two versions of this cost-effective new solution:

Introducing
T27 eXpress IT
for ClearPath MCP Servers
and A-Series;

UTS eXpress IT

for ClearPath OS 2200 Servers
and 2200 mainframes.

The cost for either is as low as **\$35** per copy with quantity discounts. The price begins at \$59.95 for a single copy.

[New - continued on page 2](#)

Having trouble finding DMS eXpertise?
Call and talk to the
professionals at KMSystems.
(770) 635-6350
Also...
See page 3 for an
important Q&A

Tool Tip

Configuring Your Keyboard with eXpress

Sometimes it is convenient to change certain eXpress keyboard settings to be more compatible with the way you use other software. For instance, UTS users might want to switch the default Cursor-to-Home and Cursor-to-Start-Line to behave more like Windows. To begin the switch, click the Configure button on the eXpress Control Panel and select the Globals tab. Next, click the Keyboard Layout button.

In the Terminal Keyboard Key Names list box, scroll down until you see the desired Key Function. In this instance, we are looking for CURSOR TO HOME and CURSOR TO START LINE.

Since we are making a switch, we must first "undefine" one of the two keys. Select CURSOR TO HOME with the mouse and click the Undefine Key button. Next, select CURSOR TO START LINE

and click the Type a Key Sequence button. Press the Home key when you see the "Please press the desired key sequence now" message box. Click the Yes button at the next prompt followed by the Redefine button.

Finally, complete the switch by selecting CURSOR TO HOME, click the Type a Key Sequence button, press Ctrl+Home, Yes and OK. You're done. The keys are switched.

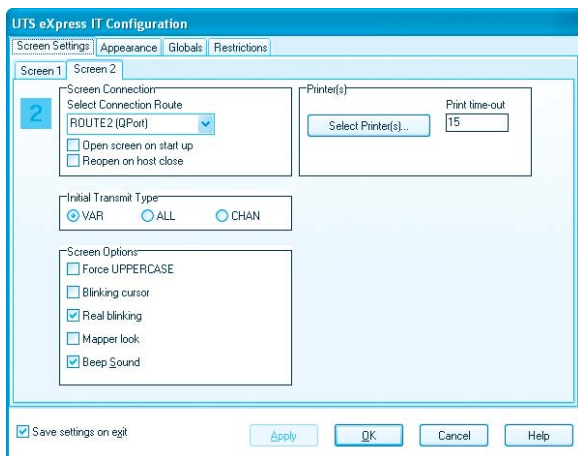
New - continued from page 1

T27 eXpress IT features include:

- Two environment windows
- Recall, edit and reissue recent input
- Fully configurable, visual keyboard
- International character translation
- Passthru Print Manager
- Print and screen font selection
- Full color control
- Complete video, datacomm and keyboard options
- Visual connections manager
- Compatibility with all 32-bit Windows platforms

UTS eXpress IT features include:

- Two screen windows
- Recall, edit and reissue recent input
- Fully configurable, visual keyboard
- International character translation
- Single-byte (English, French, etc.) and multi-byte (Chinese, Japanese, etc.) languages
- Bypass and passthru printing
- Local print objects (LPO)
- Print and screen font selection
- Full color control
- Complete UTS screen options
- Visual connections manager
- Compatibility with all 32-bit Windows platforms

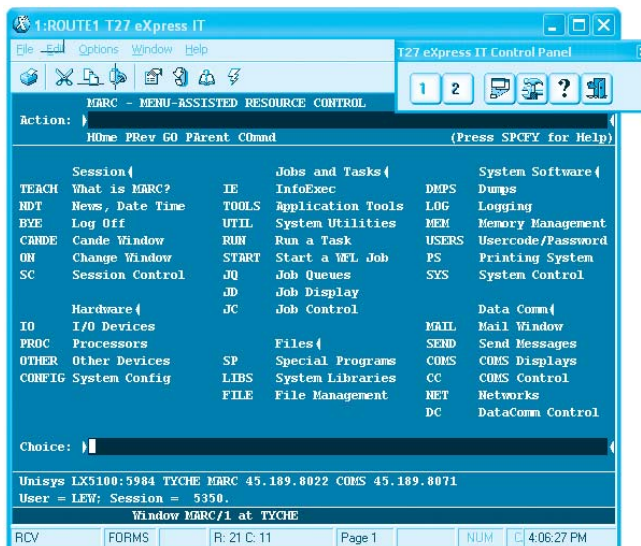


For more feature-rich emulation, KMSystems offers UTS and T27 versions containing the same features as eXpress IT but designed for added capability and distribution:

eXpress Plus - stand-alone emulation with script recorder and VB-like scripting language, dialog forms designer, configurable toolbars, up to 24 screens/environments, individual screen appearance schemes and configurable double-click and right mouse click actions.

eXpress Net - same features as eXpress Plus but installed on a file or web server for central administration of permissions and users.

eXpress Pro - same emulator as eXpress Plus but with the added capability to develop Windows applications that interact with legacy host applications.



Added Punch with eQuate Web

Our original product, eQuate, is a self-contained Windows development package that allows the development of complete Windows applications that interact and control existing host applications. Nothing else is required ... not Visual Basic™ ... not Delphi™ ... nothing. With eQuate, you design forms based upon information delivered to the screen by host programs. Controls are placed on the forms that simulate user actions at a dumb terminal. For example, the user types in an account number and clicks a "Search" button. The "Search" button has an action behind it that fires off (when the button is clicked) a transaction on the host which searches for that account and returns data. Instead of the data being presented on the traditional screen, the user sees the data presented on a Windows-style form that you have designed. It is that simple. No change to the host program ... no additional programming languages ... nothing.

Customers asked us if eQuate could be implemented through a web browser and we made it so.

Introducing eQuate Web for ClearPath Servers

Now, those same eQuate forms can be activated from a web browser. Distribute your eQuate run-time database from a server. Users see eQuate application design changes automatically without requiring any installation on user PCs. eQuate forms are cached at the user PC and only downloaded from the server when required. All communications with the host is through the QPlex server, also from KMSystems.

For more information, please call KMSystems at (770) 635-6350 and ask to speak to an Account Representative. Also, please visit our web site at www.kmsys.com for free downloads, technical information and documentation.

Q I created a file with an I-QU PLUS-1 program [would also apply to Q-LINK] and after sorting the data with @SORT, I discovered that the last word, or partial word, was being truncated. It appears that I-QU PLUS-1 does not write the "partial word count" to the record as in COBOL. Can you supply a fix?

A Unisys made a change to SORT 21R1 that considers a missing "partial word count" to be zero and truncates the data. They have since reconsidered that action (for reasons of backward compatibility) and issued PLE 17791354 and PCR 00201-01540-PCR.

Q Would you know if there's any plan to reintroduce a way to save the configuration? That hasn't been available since someone chose to place the configuration in the Windows Registry. The current set-up leaves me no way to backup/restore the information.

A The new version of UTS eXpress Plus is released with a program to save and restore the configuration files. The program is called RegImpExp.exe. When you execute this program, you can select the KMSystems products' configuration you wish to save to a file. In the case of UTS Express Plus32, you would want to save the "QPort UTS 1.0" and the "UTS Express Plus 1.0" configurations. The program can also be used to restore or convert the configuration to the newer level of the products. During the installation of the 3.0 version of UTS eXpress Plus, if a previous version of the product is detected, the user is asked if they would like to convert the configuration to the new level. The RegImpExp program is executed automatically if the user chooses to convert the configuration.

Keeping Current

Current KMSystems product levels

Product	Current Version
eQuate	2.0
eQuate Web	2.0
InfoQuest	5R6
I-QU PLUS-1	11R6
I-QU ReorgComposer	3R1
Q-LINK	6R6
QPlex Client	3.0
QPlex Server	1.0
QPlexView	3.0
T27 eXpress Family (IT, Plus, Net and Pro)	3.0
UTS eXpress Family (IT, Plus, Net and Pro)	3.0



Our Answers to Your Questions

Q I have a quick question. I have good compiles from Schema/Subschema and register went okay but I can't display any REDEFINE fields in the new schema. Just gives me "undefined item" tried with UCS and ASCII. Any ideas?

A Yep. Sure do. Build a data item index file with QINDEX using the S\$PROC directive (see Appendix C-6 in the I-QU PLUS-1 Programmer Reference Manual). Then, when you INVOKE in I-QU PLUS-1, add the NX option (see page 12-1 - 12-2). Finally, use the INDEX directive to get the S\$PROC names (see page 8-2 & 8-3). You may download the manual from our web site by visiting www.kmsys.com/ProductSupport/Docs.



Editor/Design:
Bob Moffa, Jr.

Writer:
Lew Holley

Q-Tips is distributed quarterly by KMSystems, Inc., as a means of staying in touch with its customers and maintaining a high level of customer awareness.

Q-Tips is copyrighted © 1983-2002 by KMSystems, Inc. All rights reserved.
Address all correspondence to:

KMSystems, Attn: Q-Tips
3225 Shallowford Road, Suite 1000,
Marietta, GA 30062, U.S.A.
E-mail: marketing@kmsys.com

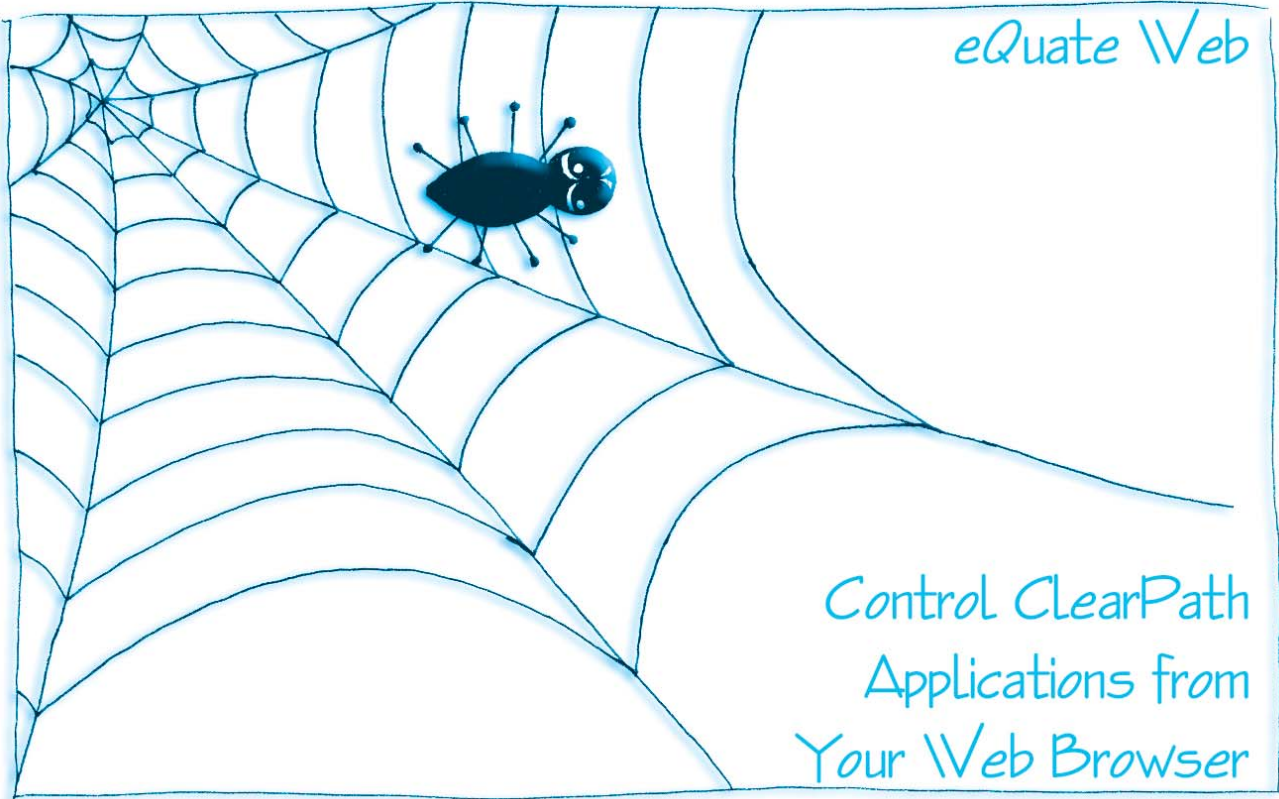
All trademarks and registered trademarks are the property of their respective owners.

Business:
Phone: (770) 635-6350
Fax: (770) 635-6351

Technical Support:
Phone: (770) 635-6363
Fax: (770) 635-6351
E-mail: support@kmsys.com

Product Information:
Phone: (770) 635-6350
Fax: (770) 635-6351
E-mail: sales@kmsys.com

Web Site:
<http://www.kmsys.com>



Your Complimentary Copy of...

