

# Q-Tips

A Newsletter from  
**KMSystems, Inc.**

Volume 15, Number 4

Fourth Quarter, 1999

## New Web-Based UTS and T27 Emulation

*The ever-evolving UTS and T27 Express line of emulation products has evolved again.*

Because of the tremendous success of our network-based emulation products UTS ExpressNet32 and T27 ExpressNet32, we have added a special feature to make both products even better.

KMSystems announces the new, Web-based capability of ExpressNet32! Users are now able to access host applications over the web by simply opening a web browser and signing on via a web page! When a user visits the web page, necessary files are automatically downloaded and installed or updated without user intervention.

In order for this to work, the web server contains the user and profile configurations for keyboards, scripts, toolbars, and host connection settings. The client PC downloads

the ActiveX component and the user configurations mentioned earlier, sets up local configurations in the registry, and starts the emulator as an OLE Automation Server.

Administrators install and run ExpressNet32 from a network or web server, minimizing time spent installing and configuring individual users. Permissions can be set for all, groups or

individual users; therefore, users can have full, partial or no control over their settings. This central configuration also allows for conforming user environments to make maintenance easy.

If you would like to download an evaluation copy of our UTS or T27 Express emulators please visit [www.kmsys.com](http://www.kmsys.com). ☐



### *In Case You Missed It*

#### *UTS and T27 Express Plus32 Professional*

Express Plus32 Professional Edition is the ultimate in host emulation products. Now you can write your own applications that interact with a 2200 or A Series host, giving you total control over your applications!

UTS and T27 Express Plus32 Professional have all the features of UTS and T27 Express Plus32, plus WinQ. WinQ is a powerful development tool, consisting of ActiveX Controls (OCXs), that allows Windows applications to access Unisys 2200 and A Series Applications. WinQ can be used in any Windows application that supports ActiveX Controls. Examples are Visual Basic, C++, Delphi and Power Builder.

This is a product you don't want to miss! ☐

#### *IN THIS ISSUE*

<i>WEB-BASED EMULATION . . . . .</i>	<i>1</i>
<i>EMULATION APPLICATIONS YOU CONTROL . . . . .</i>	<i>1</i>
<i>QUICKSERVE AND QLINK . . . . .</i>	<i>3</i>
<i>Q &amp; A . . . . .</i>	<i>4</i>
<i>CUSTOMERS SAY THE NICEST THINGS . . . . .</i>	<i>5</i>
<i>KEEPING CURRENT . . . . .</i>	<i>5</i>

## From My Desk to Yours....

It's hard to believe that the end of the whole millennium is almost here. And I use the word "millennium" loosely since this time next year, we will hear everyone saying "but this is the *real* end of the millennium".

True. But next year we won't have to worry about computer systems failing, having to horde water and food, and liquidating our bank accounts.

Because of all the potential problems, it really has been a stressful year for most of us in the computer industry — perhaps more stressful for us than any other industry. But, because of all

the hype, it's also been a very exciting year. It's not often that we see the whole world worrying about one thing so long and so often. Almost every day we seem to hear someone talk about what's going to happen with Y2K.

But, it's almost over. We only have a little over a month until we see what will happen. I really think that everything will be all right. Sure, we may have some things here and there passing out on us — old PCs, maybe some local utilities or you may not be able to program your VCR. However, none of these problems will last long. We may be inconvenienced for a short while,

but that's probably about it.

One thing you don't have to worry about is KMSystems. We will still be here on January 3rd, and we'll still be cranking out the quality products, support and service that you have grown to expect over the last 17 years.

We have some exiting products in the works for next year, and you won't want to miss any of them!

So, have a good holiday season, be safe, and don't worry about midnight on December 31st, because at 12:01, the world will still be here, and so will you and I.



KMSystems Has  
Technology  
Solutions  
for  
Unisys  
Users  
Worldwide

**Editor in Chief:**  
Bob Moffa, Jr.



Q-Tips is distributed quarterly by KMSystems, Inc., as a means of staying in touch with its customers and maintaining a high level of customer awareness.

*Q-Tips is copyrighted ©1999 by KMSystems, Inc. All rights reserved.*  
Address all correspondence to:

Q-Tips, 200 Galleria Parkway, Suite 1750,  
Atlanta, GA 30339-5946, U.S.A.  
E-mail: [mktg@kmsys.com](mailto:mktg@kmsys.com)

All trademarks and registered trademarks are the property of their respective owners.

**Business:**  
Phone: (770) 857-8730  
Fax: (770) 857-8731

**Technical Support:**  
Phone: (770) 857-8787  
Fax: (770) 857-8731  
E-mail: [support@kmsys.com](mailto:support@kmsys.com)

**Product Information:**  
Phone: (770) 857-8730  
Fax: (770) 857-8731  
E-mail: [sales@kmsys.com](mailto:sales@kmsys.com)

**World Wide Web:**  
<http://www.kmsys.com>

# QuickServe Energizes Q-LINK

*Q-LINK isn't just for MAPPER anymore. With a new 32-Bit client interface, developers can integrate host files and Windows applications.*

A few years ago, KMSystems announced QuickServe, an application programming interface (API) to Q-LINK. QuickServe is a powerful, add-on tool energizing Q-LINK for the next generation of cooperative processing.

Q-LINK has since received a total 32-bit make-over. While it still provides a client/server interface that enables Windows applications to access files and databases that reside on a 2200 server, it now does it much better.

As mainframes gained a renewed vantage point in the client/server arena, they became the trusted and secure information warehouses of the nineties. Why reinvent the data model and convert existing, accurate data?

With ingenuity and the new Q-LINK client tool, developers and end users perform routine procedures using the simplicity of the Windows operating environment. No excessive downtime is necessary for re-training.

QuickServe enhances Q-LINK in three ways.

First, the QuickServe client/server interface provides a generalized Windows application for Q-LINK program development and testing.

Data administrators write Q-Language (the language supplied with Q-LINK) programs and send them to the 2200 host only for compilation and execution. The data administrators can opt to save the executable programs on the host to achieve more efficient performance.

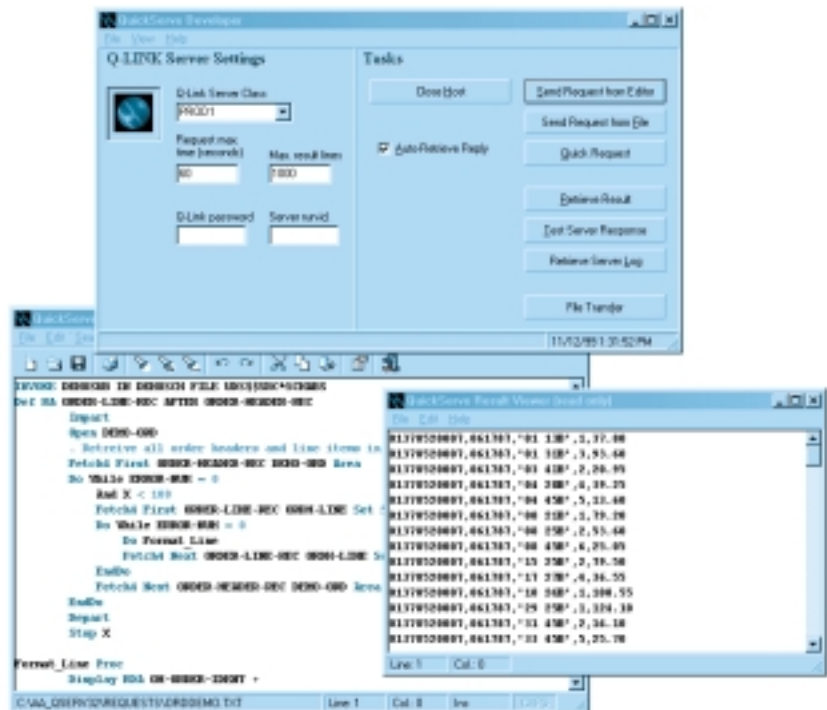
Second, QuickServe supplies an interface to Q-LINK services and handles all conversations with the QuickServe Windows application. Employees execute host Q-LINK programs and procedures remotely.

They perform routine file sorts, copies, extracts, compares, etc. from their standard PC workstation.

Third, developers create custom Windows applications utilizing QuickServe. The custom client applications invoke Q-LINK services to access and/or update databases or files residing on the Unisys 2200 host.

Q-LINK has long provided a high-performance transaction processing environment for MAPPER access to non-MAPPER databases. Q-LINK operates entirely outside MAPPER but is controlled by user-written MAPPER runs to access all file structures in the Unisys 2200 environment. The user interfaces support access through a MAPPER or DEMAND interactive session.

QuickServe gives Q-LINK a client interface.





Your Questions

Our Answers

**Q** I saw a brochure from KMSystems that mentioned a product called I-QU ReorgComposer. After reading about it, it sounded just like I-QU 2000. Are these products related?

**A** Actually, these products are one in the same. Since the Y2K problems are almost past us, we thought the name, I-QU 2000, was limiting to the product's true capabilities.

While many customers have purchased it solely for Y2K conversions, it really does so much more than that. We believe that I-QU ReorgComposer more closely fits its purpose — the only software to automatically generate I-QU PLUS-1 database reorganization programs quickly and efficiently.

**Q** I work for a company that does not like to make purchases until they have seen the product. Your brochures and fliers have been very helpful in our decision-making process, but is there a way that we can get a hands-on feel for your products?

**A** I'm glad that the marketing materials you have read have been so helpful. We're doing our best here to give you the highest-quality products, support, and information that we can provide!

As far as trying out the products before you buy them, our web site has been very helpful there. If you go to [www.kmsys.com](http://www.kmsys.com), you will see that there are on-line demos of both QPlex and its companion product, QPlexView. Several of our products have evaluation copies that can be downloaded from the site while others can be shipped to you as full copies with an expiration date.

We hope this helps. If you have any further questions about our products or evaluations, please call a KMSystems representative at (770) 857-8730.

*If you have questions, comments or helpful tips that may be of interest to other users, please write to us.*

KMSystems, Inc.  
**Attn. Q&A**  
 200 Galleria Pkwy  
 Suite 1750  
 Atlanta, GA 30339-5946  
 USA  
[support@kmsys.com](mailto:support@kmsys.com)  
 (770) 857-8787

**A Reorg Shouldn't Make You Grouchy.**

Why put yourself through the wringer when it comes to reorg time?

Let I-QU ReorgComposer automatically generate I-QU PLUS-1 programs and save up to 80% downtime over conventional methods!

Contact KMSystems for more information.



*Your Tip Here*  
*Let us know what*  
*you want to see.*

We are very dedicated to our customers and want to give you everything you need in order to fully utilize our products. That is why we want to hear from you.

Send in any ideas for future articles, features, tips or whatever! All received suggestions will be entered into a drawing for a free KMSystems T-shirt. Send them to:

Q-Tips  
 200 Galleria Parkway,  
 Suite 1750,  
 Atlanta, GA 30339-5946, U.S.A.  
 E-mail: bobjr@kmsys.com

## Customers for Life

*We always love to hear first-hand if we are doing a good job. It's things like this that make it all worth while.*

We appreciate  
 the great  
 comments we  
 hear from our  
 satisfied cus-  
 tomers and do  
 what we can  
 to keep you  
 coming back!

"We have found that we save a great deal of time by using the product [I-QU ReorgComposer] to generate I-QU PLUS-1 reorganization programs as well as the run-streams to run the reorganizations. Carnival Cruise Lines is very pleased with the product and has no plans to seek alternatives."

George Weber, Carnival Cruise Lines

## Keeping Current

*The following is a listing of all KMSystems products with their current release levels (all of which are Y2K compliant).*

### Connectivity

**MasQ** — Complete package to modernize existing Unisys 2200 or A Series applications, or to create new client/server applications – includes Windows controls, a programming language, an embedded emulator, plus DDE and OLE interfaces. *Current Level: 3.2*

**QPlex** — Internet / Intranet server providing UTS emulation to run all Unisys 2200 applications – TIP, Demand, and MAPPER – directly from any web page. *Current Level: Client 2.x/ Server 1.1*

**QPlexView** — A web-based development tool for viewing legacy host applications through your browser with QPlex. *Current Level: 1.0*

**UTS/T27 Express Plus32** — Powerful yet inexpensive 32-bit emulation for users who require three or more sessions at a time, or other enhanced features such as a VBA compliant BASIC scripting language – communication direct via Windows Socket and TCP/IP stacks. *Current Level: 1.0*

**UTS/T27 ExpressNet32** — 32-bit PC to host connectivity using the power and performance excellence of Express Plus32 with the added bonus of network or web-based configuration and administration. *Current Level: 1.0*

**UTS/T27 Express Plus32 Professional** — Emulation containing all the features of Express Plus32, but with the added ability to develop Windows application programs that interact with host applications. *Current Level: 1.0*

### Productivity


**I-QU ReorgComposer** — Client interface option for I-QU PLUS-1, facilitates database conversion (such as expanding fields for 9-digit zip codes) and automatic reorg code generation – a must-have tool for any reorg. *Current Level: 3R1*

**I-QU PLUS-1** — The most powerful Unisys 2200 database reorganization and development tool – effectively maintains the security of existing data and minimizes database downtime. *Current Level: 11R6*

**Q-LINK** — Powerful programming and access method to DMS 2200 and other file types from MAPPER or client Windows applications. *Current Level: 6R6*

**InfoQuest** — Flexible, ad hoc query and report generator with user interfaces for Windows, MAPPER, and OS2200. *Current Level: 5R6*

**QuickServe** — A Windows API that allows you to develop Q-LINK Windows applications to access Unisys 2200 databases and files. *Current Level: 2.0*

For more information, or if you are not using the listed releases, but would like to upgrade, contact a KMSystems account representative. If you are currently under a maintenance agreement the products will be shipped to you. If you are not currently under a maintenance agreement, your account representative can get you started. 

# You're Searching for Something Better...

But it's right in front of you.  
Nothing comes close to  
**I-QU ReorgComposer** —  
the world's only automatic  
database reorganization  
generation tool.



I-QU ReorgComposer is the must-have tool for database  
conversion and automatic reorg code generation.



*Your Complimentary Copy of...*

