

## Speed Buttons and Help Tutors with InfoQuest Client 32-Bit Version

As announced in early 1998, KMSystems is developing seven 32-bit applications for the Windows NT and Windows 95 platforms. InfoQuest is the first product to "break the bit barrier."

Companies store so much data that it can sometimes be difficult to put your hands on the information needed. The InfoQuest Information Network offers a uniform method and procedure to generate reports or to do file queries. People who need information can create their own query and search details. InfoQuest Client is one of three presentation platforms available to suit individual preferences.

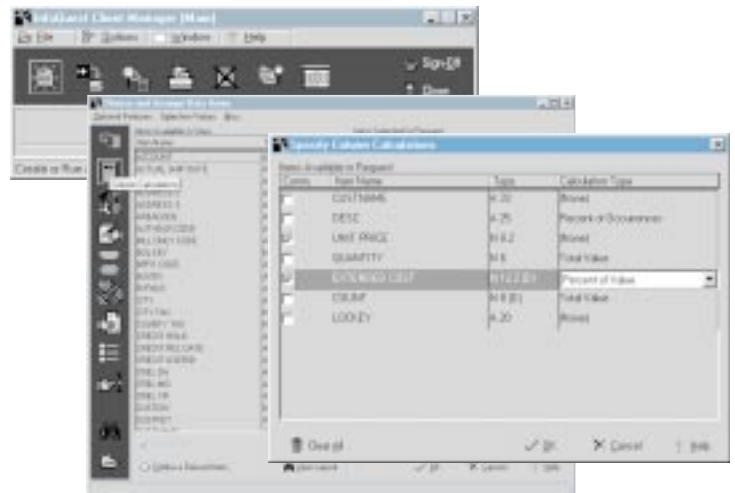
KMSystems is introducing the 32-bit version of InfoQuest Client. This new product is a full-featured 32-bit application. It is functionally the same as the 16-bit InfoQuest Client with a few exceptions. Let's take a look at the sleek, clean look of InfoQuest Client 32-bit.

### WINDOWS 95 STYLE

The new InfoQuest Client offers a more refined product over its 16-bit counterpart. KMSystems

originally designed the InfoQuest product for the end user. It gives clerks, analysts, accountants, decision makers, etc. the ability to perform file passes themselves; they do not have to submit a request to the IS department and wait for days or weeks in the queue to get results. Consequently, the IS staff is free to work on other programming projects.

*Continued on page 4*



Pop-up text caption explains the action resulting from the button selection.

## New MasQ Install Option for ClearPath and A Series

KMSystems introduces a direct-connect installation option for MasQ. The direct-connect option establishes MasQ PC to host connectivity directly through TCP/IP stacks. Now, all Unisys ClearPath, 2200 and A Series customers can benefit from this convenient, plug-in software package.

MasQ provides a Windows-based graphical front-end to traditional Unisys 2200 and A Series application programs. Initially, MasQ replaces archaic text screens with enhanced graphical user interface (GUI) windows. The GUI result not only provides additional functionality, but also makes the legacy applications much easier to use.

*Continued on page 5*

### In This Issue

32-BIT INFOQUEST CLIENT . . . .	1
NEW MASQ INSTALL OPTION . . .	1
UTS EXPRESSNET GOES TO SWITZERLAND . . . . .	3
EXPRESS PLUS TOOLBARS	
FEATURE HIGHLIGHT . . . . .	5
Q & A . . . . .	6
PRODUCT VERSIONS BEING	
TERMINATED . . . . .	7
KEEPING CURRENT . . . . .	7

## From My Desk to Yours....

I have often heard that the only constant in life is change. Each of us experiences change. We try to embrace it; sometimes we view it as positive...sometimes negative. Regardless, we must always accept it and move forward.

KMSystems, like all companies, is not exempt from change. We are in the process of embracing a tremendous change. You may have noticed that the signature at the end of this article is not the familiar one you are used to seeing. This article comes from the desk of Christie, not from the desk of Shirley.

For 3½ years, Shirley has been a beloved member of the KMSystems team. As editor of Q-Tips, conference coordinator, manager of customer relations and advertising director, many of you worked with Shirley and experienced the hard working, matter-of-fact, easy-to-talk-to and thought provoking person we have been blessed to work with everyday.

Shirley, too, is not exempt from change. While here at KMSystems she endured many eye-opening experiences including numerous visits to the hospital for herself and for her husband, Donald. They recently received the final nudge and decided to postpone their dreams no longer.

**"We are in those changing times."**

Shirley Cannon  
From My Desk to Yours...  
April, 1996

As I write this article, Shirley and Donald are overseeing the movers while they pack-up the house here in Atlanta. They will begin a new life on Hilton Head Island in South Carolina. What an exciting and positive change! We will move forward, but we will miss her.

You may see future articles from Shirley as she begins her new life. Keep watch, and know that KMSystems will continue to provide the same quality newsletter you are accustomed to receiving.

As change is inevitable, so is the passage of time. It is hard to believe that conference time is already upon us.

At the conferences, we will highlight four key products. I-QU 2000 can truly save time - no extensive training is required to use the product, just a basic understanding of Unisys 2200 file structures, because it automatically generates the database reorganization code for you!

UTS Express Plus and its compatriot T27 Express Plus provide connectivity/emulation up and running in under 10 minutes - that is installation, configuration and user access.

InfoQuest Client 32-Bit offers information retrieval and ad hoc report functionality with the performance advantage of the 32-bit architecture from a Windows platform.

If you make it to either the Valley Forge UNITE Technical Symposium, April 6 - 8, or the Strasbourg UUA Conference, April 27 - 30, please come by our booth. We will give you a tour of our products and propose a comparison of performance and cost factors. Should you not make it to Pennsylvania or France, visit our web page - it's FREE and available 24 hours everyday!

*Christie L. Hunt*

### Editor:

Shirley Cannon

### Layout & Design:

Bob Moffa, Jr.



Q-Tips is distributed quarterly by KMSystems, Inc., as a means of staying in touch with its customers and maintaining a high level of customer awareness.

Q-Tips is copyrighted ©1998 by KMSystems, Inc. All rights reserved.  
Address all correspondence to:

Christie Hunt, 200 Galleria Parkway, Suite 1750,  
Atlanta, GA 30339-5946, U.S.A.  
E-mail: mktg@kmsys.com

All trademarks and registered trademarks are the property of their respective owners.

### Business:

Phone: (770) 857-8730  
Fax: (770) 857-8731

### Product Information:

Phone: (770) 857-8730  
Fax: (770) 857-8731  
E-mail: sales@kmsys.com

### Technical Support:

Phone: (770) 857-8787  
Fax: (770) 857-8731  
E-mail: support@kmsys.com

### World Wide Web:

<http://www.kmsys.com>

# Technology Solutions for Unisys Users Worldwide

## EMS-CHEMIE AG Selects UTS ExpressNet for Connectivity

**Reliability and efficiency are essential for an international communication network.**

"We needed a solution yesterday," comments Peter Elbau, EMS-CHEMIE System Manager, "our current emulation product was quite costly and did not meet all of our requirements." Having a proven history of good experiences with KMSystems (I-QU PLUS-1 licensee since October 1987 and a Q-LINK licensee since October 1988), EMS-CHEMIE initiated an investigation of KMSystems emulation software.

### BACKGROUND

EMS-CHEMIE, a business unit of the EMS Group, is a Swiss company in the town of Domat/Ems. Since the late 1930's, EMS-CHEMIE has been manufacturing homopolymers and copolymers – materials based on polyamides and polyesters. These performance polymers provide custom-made materials that enhance the chemical and physical properties of natural materials (e.g., wood, leather, stone, metal).

As part of a complete solution for customers, EMS-CHEMIE also develops the application processes necessary to use their materials to produce a finished product. Materials

are supplied in the form of liquids, granulates, powders, fibers, etc. Examples of customer finished products are ski boots, bicycle components, food packaging, textiles and papers.

The Information Technology division develops and maintains business applications in TIP, Demand and MAPPER. Approximately 750 PCs and workstations are connected to the ClearPath HMPX 4400 system and require emulation software to access the business applications. A reliable and efficient communication network is essential to the operation encompassing an international marketplace and production facilities in Germany, the USA and Taiwan, plus an affiliate in Japan.

### PRODUCT EVALUATION

EMS-CHEMIE started the connectivity investigation in May 1997 with an evaluation of UTS Express. UTS Express installed quickly and provided the basic and most common emulator functions. Performance was acceptable; however, support for various printing options and a method of programming

actions was not available.

Meanwhile, KMSystems was developing a feature-rich terminal emulator based on the engineering of UTS Express. "We were able to incorporate the features requested by EMS-CHEMIE into the new UTS Express Plus product," states Bob Moffa, President of KMSystems. "Our emulation strategy was to introduce a fully functional terminal emulator not dependent on an external communications manager. We wanted to bring to market a plug-in emulator that used the speed and efficiency of Windows Sockets and TCP/IP stacks."

When UTS Express Plus was ready for release, EMS-CHEMIE proceeded to put the software to the test. UTS Express Plus did meet the defined requirements. Several printing options were included: UTS and screen print, print capture, direct print and printer selection. Experimentation with the scripting language found the Visual Basic-compliant commands and syntax both logical and powerful. Scripts were written for end users who could subsequently invoke

the programmed action with one keystroke or a click of the mouse.

EMS-CHEMIE finalized the evaluation process by looking at the KMSystems sister product of UTS Express Plus – UTS ExpressNet. UTS ExpressNet is actually UTS Express Plus with the advantage of network compatibility. UTS ExpressNet is installed, configured and executed from the network.

### MAKING THE DECISION

Staff and management reviewed the evaluation results, compared the purchase and maintenance costs of their current product to the proposed solution, and calculated the return on investment. UTS ExpressNet was selected to replace existing software and to implement new installations. The EMS-CHEMIE staff highlighted UTS ExpressNet as easier to configure, outperforming their current emulator and available for a very good price!

The final decision was an easy one to make according to Mr. Elbau. "We can count on KMSystems for fast support reactions. They have committed personnel, who are nice people." ◀



EMS-CHEMIE in Domat/Ems, Switzerland

*InfoQuest Client - from page 1*

The 32-bit InfoQuest Client is intuitive. Anyone familiar with using Windows 95, Outlook, Excel, Microsoft Office, or Power Point will feel very comfortable. The control button panel, with function icons, supplements the typical drop-down menu selections lists. Complete redundancy is built-in. Users can initiate the application features using the method with which they are most at ease: buttons, shortcuts, accelerator keys or menus – all arranged in a sensible format which Windows users expect for controls.

#### PERFORMANCE ADVANTAGES

The 32-bit architecture uses a flat memory model versus a segmented memory

model – no keeping track

The standard 16-bit architecture and logic currently limit the InfoQuest Client 16-bit version. Now, the 32-bit version presents a state-of-the-art product for the end user with all the performance advantages inherent in a 32-bit application.

Windows users will see the difference in the look and feel. And they will realize time savings from the quick response and processing available with the speed buttons and instruction tailoring options.

#### 32-BIT FEATURE ENHANCEMENTS

The InfoQuest Client button panel allows you to tailor instructions for data requests and data manipulation. Users can customize requests with variable date formats, request headers and footers.

The 32-bit control panel also supports hints. These are pop-up text captions that display when the mouse cursor is moved over the control button. They explain the action resulting from the button selection.

The feature dialogs have a different appearance, providing controls whenever possible. Users will find wizard-like features; dialog movement is allowed forward (next) or backward (back) where appropriate.

Right-mouse click technology has been incorporated to make select and data entry easier, quicker and more intuitive for the people initiating the

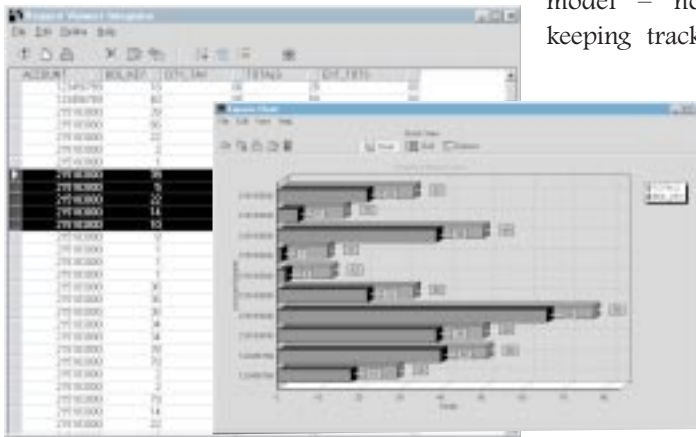
information queries. Users can activate help walk-through tutors for any 32-bit InfoQuest Client control.

Ease-of-use enhancements are all found in the new InfoQuest Client dialogs, for example in the Download Result, View Result, Subset View Generation, Automatic Scheduling and Route Results to Users or Printers dialogs.

One other enhancement important to highlight is the Viewer Integrator which now uses a 32-bit grid control. The 32-bit control incorporates the seamless operation of Express Chart (see Q-Tips Volume 13 No 4). Express Chart captures the data displayed and transforms it into pie charts, bar graphs, etc. This generation of charts and/or graphs is more logical and easier to use.

#### CONCLUSION

InfoQuest Client (16-bit) and now InfoQuest Client (32-bit) provide cooperative processing environments where the PC software is integrated with mainframe software. The user views of critical business information become business objects for reuse once the requester defines selection and search criteria. Sites can opt for either version of the InfoQuest product based on their platform and processing needs.



*Express Chart makes graphing a snap.*

of segment registers. This model allows the compiler to use fewer instructions managing memory and, as a result, more time doing useful work. Multiple programs can run efficiently, simultaneously.





## You Can Switch Toolbars Easily With Express Plus

Have you written any scripts or macros for your in-house applications? Yes. Well, have you thought about adding a customized toolbar for your users? The toolbar would provide easy access to those auxiliary actions.

A subroutine has been added to the common scripting language used by T27 Express Plus, UTS Express Plus and UTS ExpressNet. *Switch Toolbar* allows you to change the toolbar being currently displayed. Thus, with this capability you can replace the default toolbar with an application specific toolbar, and subsequently restore the default toolbar.

The *Switch Toolbar* subroutine can be included in any script. For example,

Figure 1

### SwitchToolbar Subroutine (Express Plus)

Change to a different toolbar.

#### Format:

SwitchToolbar *ToolbarFile*, *ShowIt*


*ToolbarFile* is a string expression comprising just the file name and extension (no path) of a toolbar file. *ShowIt* indicates whether or not the toolbar is visible (**True** or **False**). If **True**, the toolbar will be shown immediately upon executing the script; if **False**, the toolbar will be hidden. In addition, the new toolbar and shown state will be used the next time the screen is opened. The following are examples:

```
SWITCHTOOLBAR "MAPPER.TBR", TRUE      ' SHOW THE MAPPER TOOLBAR
SWITCHTOOLBAR "", FALSE                ' USE THE DEFAULT TOOLBAR AND HIDE IT
SWITCHTOOLBAR "", TRUE                 ' SHOW THE DEFAULT TOOLBAR
SWITCHTOOLBAR "MYTOOL.TBR", FALSE     ' SELECT A CUSTOM TOOLBAR AND HIDE IT
```

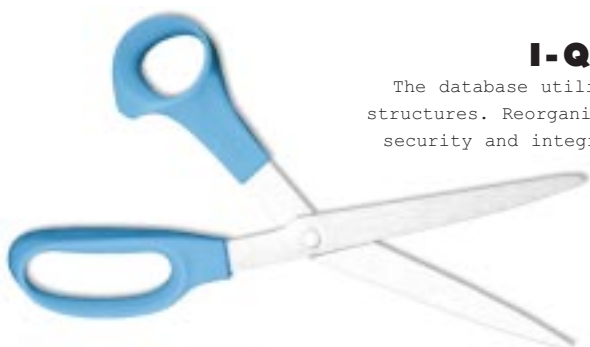
a user selects a specific application from the initial toolbar. When the application button is hit, a script is started. The script calls for a new toolbar, specific to the given

application. The *Switch Toolbar* subroutine will indicate whether the toolbar is visible or to be hidden.

Any in-house written TIP/DPS, MAPPER or LINC

application or COBOL program can take advantage of the *Switch Toolbar* command. The command format and examples are displayed in Figure 1. 

Cut down your  
database reorg time.



### I-QU PLUS-1

The database utility for all Unisys 2200 file structures. Reorganize databases while maintaining security and integrity and minimizing downtime.

### I-QU 2000

Client interface to I-QU PLUS-1, automatically generates database reorganization code including in-place reorgs and date field changes. Transforms inexperienced DBAs into competent, functioning DBAs in minimal time.

### MasQ - from page 1

Developers can arrange screens for better readability, add pick-lists when values are predefined, and provide context sensitive help.

Alternatively, developers can use MasQ to develop completely new client-based applications. The new applications can run host-based transactions through a powerful combination of a VBA programming language, the Windows API and OLE Automation.





## Your Questions

## Our Answers

**Q** I have UTS Express Plus installed on my PC, and I am running it on a Windows 95 platform. I have UTS Express Plus configured to Direct Print, but nothing is being printed. How can I fix this problem?

**A** UTS Express Plus performs the direct print function by working with a Windows print driver. To establish communications between the two, you must setup Windows to print directly to the printer. From the Windows 95/NT Start menu on the active task bar, select Settings, Printers. Right mouse click on the desired printer and select Properties. Using the Spool Settings button on the Details tab, select the Print directly to the printer option.

The above setting changes are not required for Windows 3.x or Windows for Workgroups.

**Q** I am evaluating MasQ. Could you clarify the procedure for setting form attributes?

**A** The MasQ Form Window is what the end user will see and interact with. Display characteristics are essential to making the window user friendly. You can set these display characteristics, or form attributes, from the MasQ Form Design screen.

If you are not currently viewing the form design, select the Application Maintenance icon. You will see the MasQ Application Maintenance screen. Press the Forms button. This brings up the MasQ Form Maintenance screen. From this window, you can select the form that you would like to modify.

The MasQ Form Editor Screen appears. Press the Form Design button. At this point the form you have selected is visible.

Choose the Design Tools menu, and select the Form Setting sub-menu. From the subsequent dialog box, you can specify the form attributes: default colors for the form background and foreground text; blinking text; background color; form position - centered or maximized; and horizontal and vertical scroll bars.

Another sub-menu of the Design Tools menu, Set Form Size and Location, allows you to save the current size and location of the design window as the size and location of the initial display of the MasQ form at runtime. Once set, you may resize the design window without affecting the initial display size and location.

**Q** Can you please explain what SCHUTL does in I-QU PLUS-1?

**A** SCHUTL is the schema modification utility for I-QU PLUS-1. The utility provides a means for database administrators to produce special schemas and subschemas for load and I/O efficiency. The SCHUTL program applies certain modifications to an object schema and/or subschema, without incurring the overhead of the DDL and SDDL processors. SCHUTL will directly modify the object schema and subschema absolute element upon execution.

To use SCHUTL, you call the processor selecting an execution option (batch, demand or debug mode). You then specify directives

defining which modifications to perform. Examples of SCHUTL actions are: ignore the linking of records into secondary sets during reload to eliminate the I/Os otherwise required to the owner/members of the secondary sets; turn area looks off to eliminate unnecessary I/O during reloads; and change the schema to allow CALC records to be loaded as if the "Duplicates Allowed" clause were used in the schema for the named record - just to name a few.

Changes that are made by SCHUTL are permanent; therefore, schemas and subschemas to be modified should be backed up to an alternate EXEC file before using this program.



If you have questions, comments or helpful tips that may be of interest to other users, please write to us.

KMSystems, Inc.  
Attn. Q&A  
200 Galleria Pkwy  
Suite 1750  
Atlanta, GA 30339-5946  
USA  
support@kmsys.com  
(770) 857-8787

## Product Versions Being Terminated

Earlier this month, KMSystems distributed letters to all customers. The purpose was to officially inform each customer of the September 1, 1998, termination date for previously released versions of our products. This was done in accordance with the terms of our software license agreement:

"Whenever KMS formally announces and delivers a new revision of the PRODUCT to any one of its customers, KMS may also

announce a termination date for maintenance of prior revisions. Under this Agreement, maintenance of a specific revision will be provided for a minimum of six months after KMS notifies Customer in writing of such termination."

A copy of the letter is published herein for your reference. The list of currently supported product versions is included below. Customers may contact KMSystems for clarification via:

Telephone: (770) 857-8730  
Facsimile: (770) 857-8731  
E-mail: support@kmsys.com.

## Keeping Current

The following is a chart of the KMSystems supported product levels.

Current Version	KMSystems Product
5R3	InfoQuest Client, EX and MAPPER
11R4	I-QU PLUS-1
1R2	I-QU 2000
3.2	MasQ
1.13	QGate
6R3	Q-LINK
1R1	QuickServe
2.14	QPort-QSQLink
1R6	QPort-TCP/IP
1R3	QuikSynQ DOS
1R3	QuikSynQ LAN Gateway
3.00	QuikSynQ for Windows
2R1C	QTRAN
1.0	T27 Express Plus
2.0	UTS Express
1.0	UTS Express Plus

**KMSystems, Inc.**  
200 Galleria Pkwy, Ste 1750  
Atlanta, GA 30339

Phone: (770) 857-8741  
Fax: (770) 857-8731  
Web: <http://www.kmsys.com>

Dear Valued Customer:

Thank you for your support and confidence throughout the term of your product license. KMSystems strives to meet and/or exceed your expectations as we serve each customer.

KMSystems in direct response to customer comments and suggestions continues to enhance and modify our products. Additionally, there are industry standards and technological advancements that often prompt us to revise product logic and internal processing.

Therefore, after careful contemplation and review of the product levels released and supported by KMSystems, KMSystems announces a termination date for the maintenance of prior product revisions. As of September 1, 1998, KMSystems will no longer support the product versions released prior to the current product release levels. Please review the attached document listing the supported product levels.

If you are not using the listed releases, but would like to upgrade, you may proceed in one of two ways:

- 1) If you are under maintenance, simply call Barbara Robinson at (770) 857-8730 for an upgrade form, complete the form and return it to us; or,
- 2) If you are not under a maintenance program, call Barbara Robinson at (770) 857-8730, and ask for a price quote to resume maintenance coverage for the product(s).

We intend to provide customer support in the KMSystems tradition of "keeping the customer first" and appreciate your cooperation during the transition period. If you have any other questions, please contact KMSystems.

# InfoQuest

*designed for people who simply use or view their computer as a means to be more productive.*

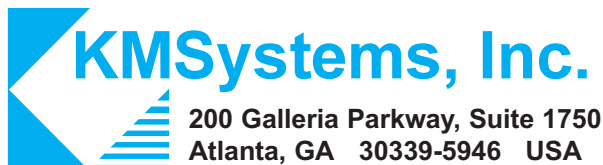


Each of the InfoQuest user interfaces uses a uniform method and procedure to generate reports of the queries.

The powerful access language of InfoQuest:

- allows simultaneous access to multiple database models;
- handles both relational and non-relational databases;
- links data from multiple applications and sources.

**InfoQuest Client • InfoQuest/EX • InfoQuest MAPPER**



*Your Complimentary Copy of...*

