

## I-QU 2000's Newest Feature, Date Aging, Adds a New Level of Confidence to Those Y2K Blues

*The 2R1 release of the popular database tool gives a fool-proof way of being sure your Year 2000 conversions are really going to work.*

"Can we get a product license key that expires after the year 2000?" This is a question we have been asked frequently as the year 2000 approaches and customers rush to ensure that their systems will be up and running after the stroke of midnight, December 31, 1999.

I-QU 2000's newest feature, Date Aging, is our solution to this common dilemma. This is the perfect way to test, and to be certain, that all of your Year 2000 conversions will actually work! You may think, or even be fairly confident, that your date conversions have been successfully made, but you will never be sure until Saturday, January 1, 2000 arrives.

The I-QU 2000 Date Aging Program is very simple to use, but will truly be a lifesaver. To begin the date aging process, you will need to

run a program within I-QU 2000 called Date Search. Here you will search your schema file for key words (date names) that will help the program determine what fields are candidates for date aging.

For example, you may choose keywords such as "YEAR", "MONTH" or "DATE". Or perhaps "DD",

*Continued on page 4*

The Date Aging feature gives you four choices when aging your data.

### Ready, Set, Reno!

*KMSystems is coming to the Fall UNITE Conference with our largest contingency ever.*

If you ever have had questions or comments that you wanted to share with someone from KMSystems, this is most certainly the time to do it. We will have plenty of people to assist you in any way possible—from sales executives to programmers to technical support to management—no avenue will be left uncovered.

This is just another way for KMSystems to continue the total support methodology that customers have come to know and appreciate. We look forward to meeting you in Booth #39.

#### IN THIS ISSUE

**32-Bit Software is Here . . . . 1**

**EXTENDED UTS GRAPHIC SUPPORT . . . . . 1**

**MASQ MAKES CLIENT/SERVER EASIER THAN YOU THINK. . . . . 3**

**CONVERT TO 32-Bit VERSIONS. . 5**

**Q & A. . . . . 6**

**KEEPING CURRENT . . . . . 7**

**MAINTENANCE- Why Do It? . . . 7**

## From My Desk to Yours....

It seems that every time we put together a Q-Tips, we are either going to or coming back from a conference. This issue is no exception. Of course, this is a good thing.

UNITE Conferences are a wonderful way of bringing the whole Unisys community together. Customers get an opportunity to put faces with the sales executives they have been talking to.

Companies have an opportunity to show, firsthand, the products that they have worked hard on. The competition between companies drives them to become better and better, which is good for everyone. Finally, let's not forget the one-armed bandits in Reno.

KMSystems is very excited about this fall's UNITE conference. We have several new product releases to introduce to you, some of which you can preview in this issue.

Over the span of the conference, speakers from KMSystems will be giving three presentations. I hope everyone will have a chance to attend one or more of these. They should prove to be very informative.

Of course, in Reno there is also the gambling ... oh, the gambling.

Beginning in 1999, we would like to add two new features to Q-Tips. However, we will need your help to make them work. Since it is our prime goal to keep our

customers always satisfied and in-the-know, we would like to hear from you. Tell us what you want to see in upcoming issues of Q-Tips. After all, this newsletter is for you.

For the other feature, we want the world to know about your successes with a KMSystems product. Perhaps your story can be an inspiration to someone else. Look for more details about these new features elsewhere in this issue.

And just to add a bit of personal news — I was married to my soul mate this October and I'm on top of the world. Feel free to send presents. Enjoy Reno and good luck with your gambling!

Technology  
Solutions  
for  
Unisys  
Users  
Worldwide

**Editor in Chief:**  
Bob Moffa, Jr.

Q-Tips is distributed quarterly by KMSystems, Inc., as a means of staying in touch with its customers and maintaining a high level of customer awareness.

*Q-Tips is copyrighted ©1998 by KMSystems, Inc. All rights reserved.*  
Address all correspondence to:

Q-Tips, 200 Galleria Parkway, Suite 1750,  
Atlanta, GA 30339-5946, U.S.A.  
E-mail: [mktg@kmsys.com](mailto:mktg@kmsys.com)

All trademarks and registered trademarks are the property of their respective owners.

**Business:**

Phone: (770) 857-8730  
Fax: (770) 857-8731

**Product Information:**

Phone: (770) 857-8730  
Fax: (770) 857-8731  
E-mail: [sales@kmsys.com](mailto:sales@kmsys.com)

**Technical Support:**

Phone: (770) 857-8787  
Fax: (770) 857-8731  
E-mail: [support@kmsys.com](mailto:support@kmsys.com)

**World Wide Web:**

<http://www.kmsys.com>

## Bring Your Mainframe Home with QPlex

*New and improved QPlex allows UTS and T27 emulation across the internet.*

QPlex brings Unisys users a new and exciting concept for emulation application connectivity that is sure to have a major impact on the way people connect to a host. QPlex is a web-direct UTS and T27 emulation product that allows users to access a mainframe that has a phone line from anywhere in the world.

Leveraging either your Internet connection or your Intranet, QPlex allows complete UTS and T27 emulation within a web browser such as Netscape or Internet Explorer. By harnessing the web browser's technology, QPlex has achieved a true zero cost-of-ownership at the client level.

QPlex provides complete emulation with a client that uses the same object-oriented technology as our 32-bit PC-based UTS and T27 emulators, UTS Express

Plus32 and T27 Express Plus32.

Among the many advantages QPlex gains by utilizing this technology are: 1) Using the same object makes for a more mature product; 2) All UTS and T27 operations are functional; and 3) Unlike other Web emulators, QPlex will do more than just TIP screen scraping—Demand, TELCON, and CMS console administration are fully functional.

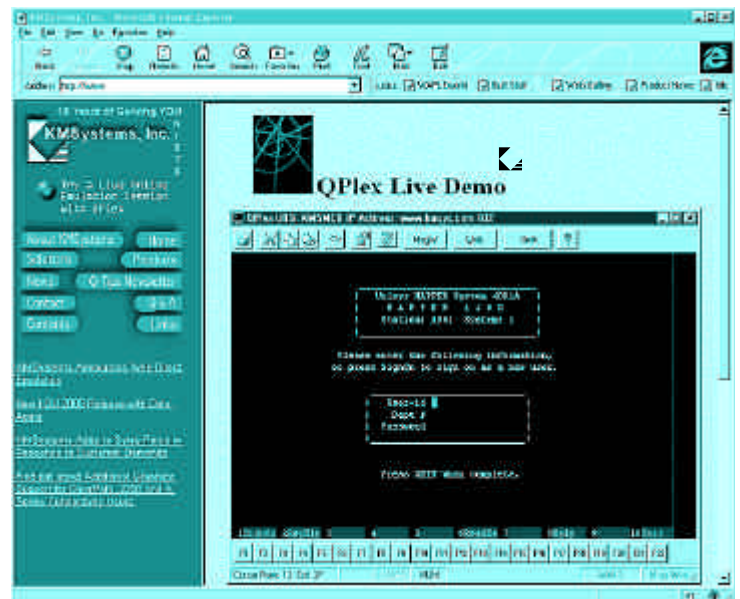
QPlex is based on the latest ActiveX technology from Microsoft. ActiveX provides a common object interface with built-in version control and distribution system.

Using QPlexView, a companion program for QPlex, you can easily create web pages containing live connections to host applications. QPlexView is an ActiveX component designed for use in Active Server

Pages (ASP) to provide access to legacy host applications over the World Wide Web.

Applications developed using ASP and QPlexView can be accessed using nearly any Web browser. Since ASP and QPlexView run entirely on the web

server, only HTML is sent to the client (browser). QPlexView connects to the host using the same QPlex Server used by the QPlex Client ActiveX component, thus connections are centrally administered in the same manner.



Using QPlexView, you can easily create web pages containing live connections to host applications.

**I-QU PLUS-1 is recognized in approximately 400 sites worldwide as the leading database reorganization productivity tool for Unisys 2200 DMS database applications. I-QU PLUS-1 will save enterprise hours, if not days, of database down time when reorganizing DMS 2200 databases.**

# I-QU PLUS-1

## Emulation- Good, Fast, Now

Can you easily and  
efficiently establish  
mainframe connectivity?  
Can the solution be  
implemented at a low cost?

KMSystems offers several  
solutions for Unisys  
customers: Internet and  
Intranet access with  
QPlex; 32-bit emulation  
with UTS and T27  
Express Plus32; and  
network-hosted  
emulation using UTS  
and T27 Express  
PlusNet32.

You selected the UTS  
or T27 environment.

Now choose  
the best way to  
utilize it.

### 32-Bit - from page 1

“MM”, “YY”. You can also list words that you do not want the program to look for. If “DD” was listed as one of your keywords, the word “ADD” would show up as a found item, unless you place word “ADD” in the exclusion list.

Next, you will identify which dates you wish to age and their format. This information is passed to the Date Aging program via a PC file.

So now what? The next step is to run the Date Aging Program in I-QU PLUS-1. This is where the magic happens. Your hypothetical date is chosen and your output is now aged. There are four choices when aging your data:

- Go Back in Time—  
Choose this option to calculate a date based on an offset entered in the Enter Date Offset (in Days) text box. The offset will be used to decrement any date marked for aging.
- Go Forward in Time—  
Choose this option to calculate a date based on an offset entered in the Enter Date Offset (in Days) text box. The offset will be used to increment any date marked for aging.
- Specify Year— Choose

this option to set the year portion of a date to a fixed year entered in the Enter Year Value (yyyy) text box.

- Find Offset from Date—  
Choose this option to calculate an offset based on the difference between the value entered in the Base Date (yyyy/mm/dd) text box and that entered in the Enter Aged Date (yyyy/mm/dd) text box. The calculated offset will be used to increment/decrement any date marked for aging.

An example of how it works would be if you wanted to see how your data will react in the year 2029, you can just choose Specify Year and type in 2029. The Date Aging Program then generates an I-QU PLUS-1 program to be run on the host.

When the final I-QU PLUS-1 program is run, the clock can be advanced on the host and your applications tested for Year 2000 compliance. You will then be able to know, without a doubt, that your data will, or has been, successfully converted to meet the Y2K requirements.

And wouldn't you like to start a fresh, new millennium without that problem hanging over your head?



## Speakers to Spread Their Wisdom in Reno

Three KMSystems employees will be giving presentations at the upcoming Reno conference. We welcome you to attend and enjoy.

Monday, November 9,  
11:00am - 12:00pm

### **(ET4015) Gaining Profitability With Host Connectivity**

*Jeff Mansour*

Combined with today's ClearPath and open system enterprise environment, emerging technology offers new solutions for host connectivity. There is web publishing, satellite communication links and more.

Whether you currently have PC to host connectivity or you support "dumb" terminal connectivity, you need to be aware of the new trends and technology.

An informed perspective gives you the advantage of discovering and implementing solutions that are more than merely serviceable — you gain solutions that help make your organization profitable!

Considerations include system performance, data access and platform portability. Other circumstantial factors include administrative procedures, ease of use, feature/option flexibility and 16-bit vs. 32-bit software. This discussion will present today's connectivity solutions and offer criteria definitions.

**Audience: Management and Technical, Vendor Presentation**

Tuesday, November 10,  
1:30pm - 2:30pm

### **(MTP4014) Integrating Web Technology With The Latest Rising Star - The Mainframe!**

*Ruth Logan*

Remember when they told us the mainframe was dying? Sure, everyone scrambled and invested in the PC world. Some applications migrated well to the new platform, but many others did not. Well, the mainframe didn't die! And, many folks have been rediscovering the value of the old behemoth.

Integrating new Web technology with the mainframe has become a major project for many organizations. The direction is to use the mainframe as a data mart and as a guardian of critical business applications.

The goal is to provide access to anyone from anywhere — enter the web browser. This presentation will discuss the options available and benefits to gain from Web to Mainframe integration.

**Audience: General, Vendor Presentation**

Wednesday, November 11,  
8:00am - 9:00am

### **(AIP4026) Streamline Keyboard Entry and Much, Much More With Express Scripts**

*Chris Moffa*

Reduce those repetitive keystrokes. Forget trying to remember what sequence of commands is required to perform a seldom-used feature.

Add a programmable function to be activated by one keystroke or a click of the mouse. You can make this wish list become a reality for you and your end-user community by implementing macros and scripts.

The Enable Scripting Language is a very powerful, Visual Basic-like programming language. Using Enable, you can write simple or complex macros and action scripts. We will walk through three examples explaining the basics essential to coding commands and conditional logic. You will take home a working knowledge and awareness of the usefulness and benefits of global macros, action scripts, OLE Automation, and customizable toolbars.

**Audience: General, Vendor Presentation**





## Your Questions

## Our Answers

**Q** When I print from UTS Express Plus 32, it prints in landscape style and doesn't use the font that I want. Why is that?

**A** In UTS Express Plus 32, you must use the configuration dialog to set up the printers you will use, then assign them to the screen that you want.

To do this, open the configuration dialog and go to the **General Settings** tab. From there, press the **Printers** button. You will be able to Add, Setup, or Delete printers from this dialog. Using the **Setup Printer** button allows you to assign the printer's orientation, font, etc.

Now that you have the printers configured, you assign them to the screens that will be used to print. Each screen will have a separate tab on which to configure printers. On each tab is an **Assign Printers** button. From this screen you can assign up to three printers that you configured

earlier from the main configuration screen.

**Q** We have recently migrated to SB7 and after installing I-QU PLUS-1 (or Q-LINK) we get a Divide Fault when trying to execute. What is the problem?

**A** The last issue of Q-Tips stated that there was a problem with ACOB level 7R2E or when PCR number 00440-03369-PCR had been applied to an earlier level of COBOL. The solution called for applying 00440-0314-PCR to COBOL.

It has since been discovered that the level of ACOB released with SB7, 7R2F, did not have 00440-0314-PCR integrated (it has been integrated in 7R2G). If you build and install any level of I-QU PLUS-1 or Q-LINK with ACOB level 7R2F, you will also need to make sure the PCR has been applied. The PCR is not required if you choose to "Quick Install" I-QU PLUS-1 or Q-LINK as outlined in Chapter 1 of the Installation Guide.

**Q** We are moving to a Unisys ClearPath machine. Do I

need a new license key for your software and if so, what procedure should I follow to get it?

**A** Yes. Our main-frame software, I-QU PLUS-1, I-QU 2000, InfoQuest, Q-LINK and Q-TRAN will require a new key since the ClearPath has a new system type.

What we require from you is a letter (or email) stating that you are moving from a 2200/xxxx to a ClearPath and are requesting a temporary license for the new machine (be sure to specify system type and site-id). Upon receipt, we will issue a 30-day key that may be used during the move. Upon completion of the move, send us another notice that the migration is complete and that you will no longer be using our software on the original system. We will then issue you a license key for the new ClearPath that will allow our software to function normally through the license expiration date of your contract.

You may notify us via facsimile at (770) 857-8731, or you can email us at support@kmsys.com.

**Q&A**  
If you have questions, comments or helpful tips that may be of interest to other users, please write to us.

KMSystems, Inc.  
**Attn. Q&A**  
200 Galleria Pkwy  
Suite 1750  
Atlanta, GA 30339-5946  
USA  
support@kmsys.com  
(770) 857-8787

## Customers for Life

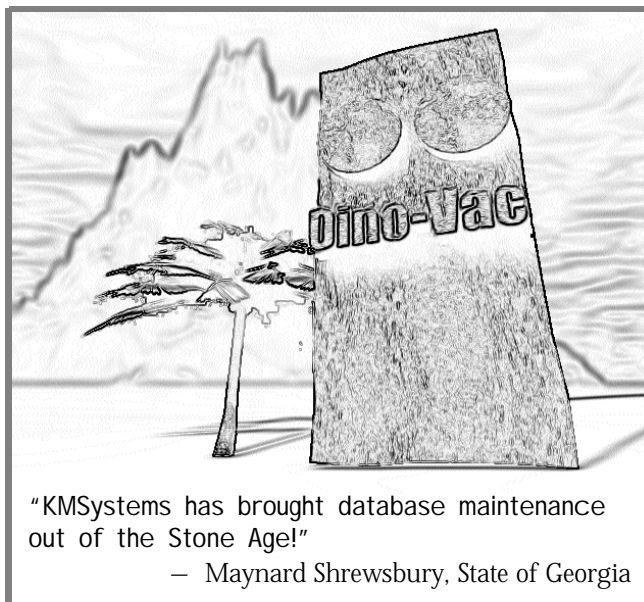
*We get a thrill when we know we have done a good job and we'd like to share some input with you.*

"Before using I -QU PLUS-1 and I -QU 2000 our weekend reorgs would still be running Monday morning. Now they're done in four hours!"

— Maynard Shrewsbury,  
State of Georgia

"You guys always answer my e-mail in hours instead of days!"

— Bob Garner,  
Lancaster County



## Your Tip Here

Let us know what you want to see.



We are very dedicated to our customers and want to give you everything you need in order to fully utilize our products. That is why we want to hear from you.

Send in any ideas for future articles, features, tips or whatever! All recieved suggestions will be entered into a drawing for a free KMSystems t-shirt. Send them to:

Q-Tips  
200 Galleria Parkway,  
Suite 1750,  
Atlanta, GA 30339-5946, U.S.A.  
E-mail: bobjr@kmsys.com

## Keeping Current

*The following is a chart of the KMSystems supported product levels.*

<b>5R4</b>	<b>InfoQuest</b>
<b>11R4</b>	<b>I-QU PLUS-1</b>
<b>1R3</b>	<b>I-QU 2000</b>
<b>3.2</b>	<b>MasQ</b>
<b>6R3</b>	<b>Q-LINK</b>
<b>1.0</b>	<b>QPlex</b>
<b>2R1C</b>	<b>QTRAN</b>
<b>1.0</b>	<b>T27 Express Plus</b>
<b>1.0</b>	<b>T27 Express Plus32</b>
<b>1.0</b>	<b>T27 ExpressNet32</b>
<b>2.0</b>	<b>UTS Express</b>
<b>1.0</b>	<b>UTS Express Plus</b>
<b>1.0</b>	<b>UTS Express Plus32</b>
<b>1.1</b>	<b>UTS ExpressNet</b>
<b>1.0</b>	<b>UTS ExpressNet32</b>

## Maintenance -

## Why Do It?

A major rule of the computer industry and the technology age is to keep informed of what is state of the art.

Keeping current with new product releases is as important as renewing yearly maintenance. Both of these practices help protect your company's investment in software, hardware, system development and application maintenance.

KMSystems abides by these principles for its own resources. We continually research the marketplace and listen to customers.

What we discover is

incorporated into our products as enhancements and system performance upgrades.

Please refer to the list of KMSystems current product releases.

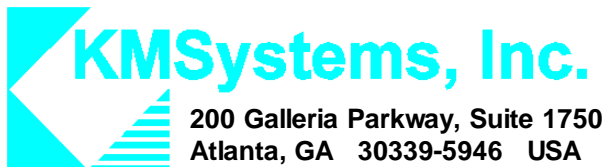
If you are not using the listed releases, but would like to upgrade, contact your KMSystems account representative and request the latest version. If you are currently under a maintenance agreement the products will be shipped to you. If you are not currently under a maintenance agreement, your account representative can get you started.

# Feeling Lucky?

Come see us at the  
UNITE conference in  
Reno! We're the cool  
ones in Booth 39.



*November 9 - 12 • UNITE Technology Conference & EXPO • Booth 39*



***Your Complimentary Copy of...***



A Newsletter from  
KMSystems, Inc.