

A Free Newsletter for
Unisys Users from

KMSYS
WORLDWIDE, INC



In This Issue

eXpress Enterprise

*The best ClearPath terminal
emulation just got better*

Invigorate Your Data Center

*Breathe new life into your
mainframe*

Current Release Levels

AppDep	1.0
CertMinder	1.0 Beta 1
eQuate	3.5
eQuate Web	3.5
Host Gateway Server	2.0
InfoQuest	5R6
InfoQuest Client	5.0
I-QU PLUS-1	11R6
I-QU ReorgComposer	3.0
Q-LINK	6R6
QPlex Client	4.2
QPlexView	4.0
T27 eXpress Enterprise	5.0
UTS eXpress Enterprise	5.0

[Contact KMSYS Worldwide, Inc.](#)
if you need an upgrade.

Next Generation of eXpress Now Available

eXpress Enterprise, 5.0

All New Product - Greater Application Potential

KMSYS Worldwide, Inc. is pleased to announce its new connectivity software: **eXpress Enterprise**. Available for users of both MCP and 2200 sites, eXpress Enterprise is a refinement of the eXpress Plus product line, and as such, is free-of-charge to customers currently under maintenance.

Released as **UTS eXpress Enterprise** and **T27 eXpress Enterprise**, Versions 5.0, the software integrates and replaces previous versions of eXpress Plus, Pro and Net. Whether for MCP sites or 2200 sites, a single installation of eXpress Enterprise contains all the components necessary to implement eXpress Enterprise as a standalone emulator or Web-based emulation from a central location. A software development kit (SDK) with a mainframe communications component is included for sites needing the ability to produce customized Windows applications using Visual Studio, Visual Basic, Delphi, etc. A single installation of eXpress Enterprise will accommodate any site's implementation requirements.

Additional Configuration Options

The new eXpress Enterprise simplifies the maintenance of host connections. Each connection is maintained by a screen name selected by the user. This screen name becomes the button caption shown on the eXpress Enterprise control panel and may be color-coded for convenience as shown on the following page.

Continued on page 2

Invigorate Your Data Center

The 2009 UNITE Unisys User Conference is right around the corner, November 8-11 to be exact. The theme this year is "Invigorate Your Data Center". Incidentally, that is our theme as well.

We know that the mainframe is probably the most powerful machine your business utilizes and it is our job to secure that investment by bringing out its full potential. With the OS 2200 Productivity Tools from KMSYS Worldwide, your mainframe will be more responsive, functional and easier to use than ever.

[I-QU PLUS-1](#) for Unisys OS 2200 database reorganization and development.

Automatic 2200 database reorganization and conversion code generation with [I-QU ReorgComposer](#).

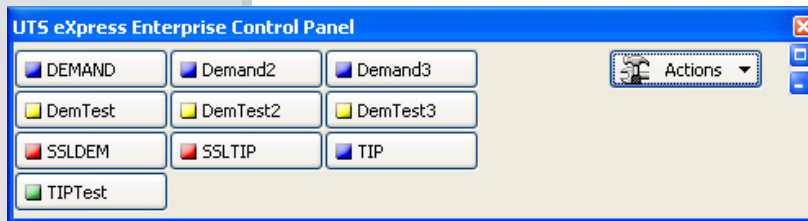
[InfoQuest](#) 2200 ad hoc query and report generation.

[Q-LINK](#) makes all 2200 data types available to BIS.

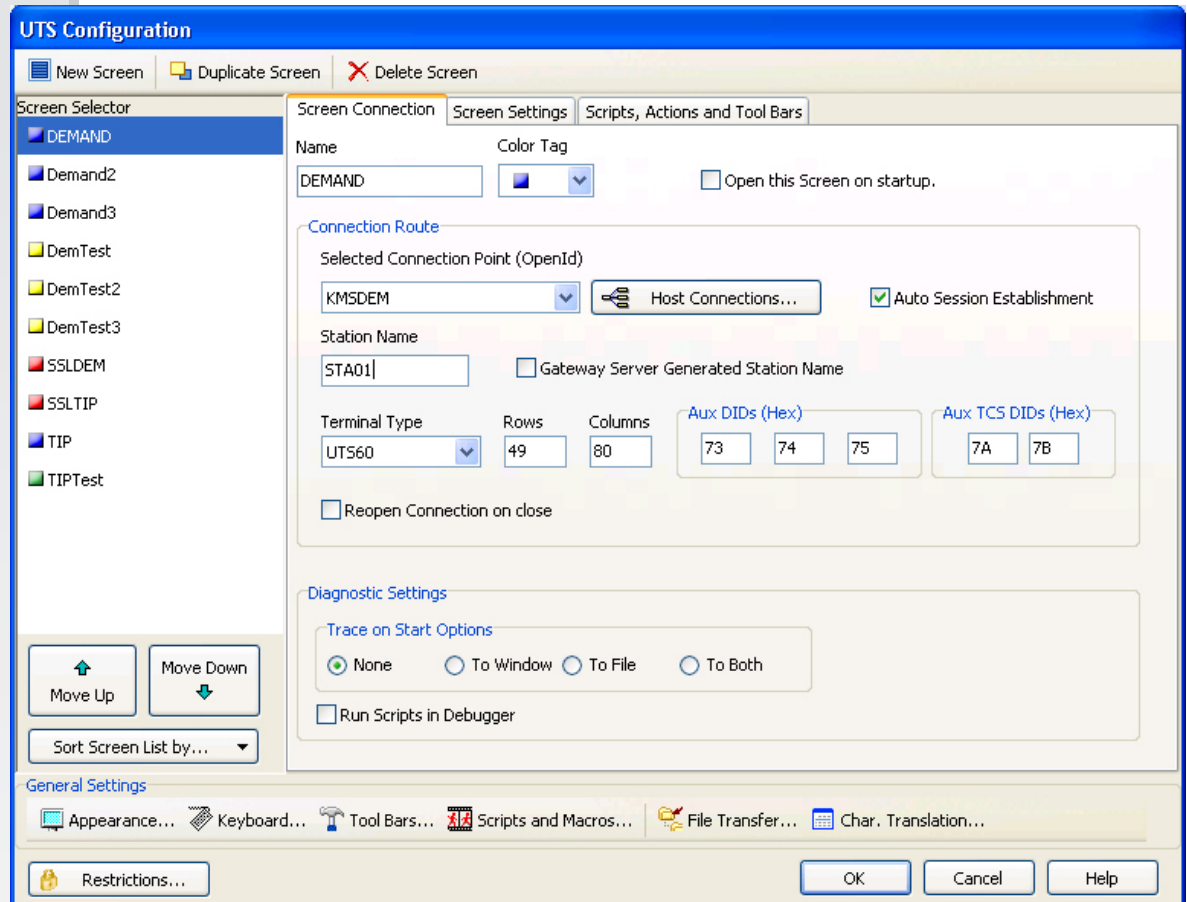
We didn't invent the mainframe ...



we just made using it easier.

eXpress Enterprise - continued from page 1

All terminal information (terminal type, rows, columns, etc.) is now easily viewed or changed by screen. Enterprise maintains a pool of host connection points to which screens are linked. Possible connections include host IP addresses, Host Gateway Servers, DCP Routers, etc. Connections may be configured with or without SSL encryption and authentication.



Users may now record and maintain simple key macros. Key macros enter a series of predetermined keystrokes when run and are useful where more complex scripts are not required.

Enterprise contains a new feature allowing users to take snapshots of one or more screens, view them with the included viewer, save them to (or load them from) files, or print selected snapshots. This feature is useful when it is desirable to manually record screen activity for historical purposes.

An eXpress Notes feature allows users to create and store notes that will be available to subsequent eXpress Enterprise sessions. Notes are useful to document processes that are infrequently used or to provide a bookmark or reminder for resuming further online activity.

New Powerful Scripting Engine

In an effort to provide added flexibility to application development, eXpress Enterprise comes with a completely new scripting engine allowing a choice of BasicScripts, PascalScripts or JScripts. Consequently, maintaining scripts in a language compatible with commonly used application development packages (Visual Studio, Visual Basic, Delphi and Java) offers shops the ability to standardize and simplify their development efforts.

Like the eXpress Plus product line, eXpress Enterprise includes a visual Dialog Designer that, when coupled with the scripting languages, makes an even more powerful application development tool. The Dialog Designer allows users to create object-oriented forms with controls (buttons, list boxes, etc.)

that fire off Event Actions when users manipulate those controls at runtime. As with scripts, the user chooses whether to maintain the Event Actions code in Basic, Pascal or Java.

A script might run based on a string of data received from a host application. That script could then open a dialog that would solicit selected responses from the user. Based on those responses, programmed Event Actions would take place to solicit additional information, interface with other PC/mainframe software, drive additional dialogs, or a myriad of other possibilities. Regardless of how a site chooses to use scripts and dialogs, eXpress Enterprise requires no change to existing host applications.

Useful scripting examples are installed with eXpress Enterprise and others may be found in the online help.

The development environment for both scripting and dialog design includes helpful functions to check language syntax and to run scripts/forms with a debugging option. The Dialog Designer offers an easy-to-use design pallet for visually creating forms. Especially helpful is the new Class and Function Helper that allows the developer to see at-a-glance available classes, their properties and methods, functions/procedures/subs, variant types and constants. There is even an option to copy the displayed entry to the clipboard for subsequent inclusion in a script or action.

For more information on T27 eXpress Enterprise or UTS eXpress Enterprise, please contact KMSYS Worldwide, Inc. at (770) 635-6350 or visit www.kmsys.com.



Editor/Design: Bob Moffa, Jr.
Contributors: Lew Holley

Q-Tips is distributed by KMSYS Worldwide, Inc. as a means of staying in touch with its customers and maintaining a high level of customer awareness.

Q-Tips is copyrighted © 1983-2009 by KMSYS Worldwide, Inc. All rights reserved. Address all correspondence to:
KMSYS Worldwide, Attn: Q-Tips
1905 Woodstock Road
Suite 2100
Roswell, GA 30075, U.S.A.
E-mail: sales@kmsys.com

All trademarks and registered trademarks are the property of their respective owners.

Business:
Phone: 770.635.6350
Fax: 770.635.6351

Product Information:
Phone: 770.635.6350
Fax: 770.635.6351
E-mail: sales@kmsys.com

Technical Support:
Phone: 770.635.6363
Fax: 770.635.6351
E-mail: support@kmsys.com

Web Site:
www.kmsys.com

