



**In This Issue**

**CertMinder**  
*Easily Monitor and Maintain Certificates*

**AppDev**  
*An Innovation for No-Hassle Code Distribution*

**Q&A**  
*Installation Conundrum:  
.EXE or .MSI?*

**Greetings from KMSYS South**  
*KMSYS Goes Worldwider*

**Current Release Levels**

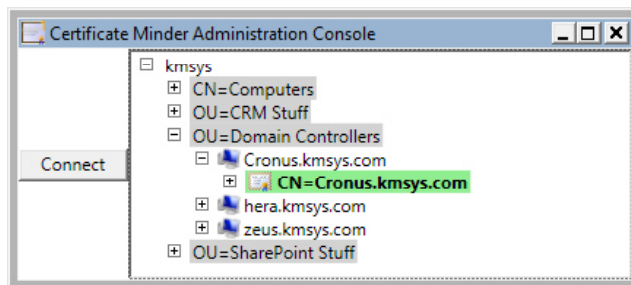
<a href="#">AppDep</a>	1.0
<a href="#">CertMinder</a>	1.0 Beta 1
<a href="#">eQuate</a>	3.5
<a href="#">eQuate Web</a>	3.5
<a href="#">Host Gateway Server</a>	2.0
<a href="#">InfoQuest</a>	5R6
<a href="#">InfoQuest Client</a>	5.0
<a href="#">I-QU PLUS-1</a>	11R6
<a href="#">I-QU ReorgComposer</a>	3.0
<a href="#">Q-LINK</a>	6R6
<a href="#">QPlex Client</a>	4.2
<a href="#">QPlexView</a>	4.0
<a href="#">T27 eXpress Family</a>	4.2
<i>(IT, Plus, Net and Pro)</i>	
<a href="#">UTS eXpress Family</a>	4.2
<i>(IT, Plus, Net and Pro)</i>	
<a href="#">Contact KMSYS Worldwide, Inc.</a> <i>if you need an upgrade.</i>	

## Easily Monitor and Maintain Certificates

By Roy Chastain

We are excited about a new product offering called, CertMinder. If your job involves installing and maintaining SSL or code-signing certificates, CertMinder will make your life much simpler. CertMinder provides monitoring and expiration notification of any or all certificates installed on Windows systems within a Windows domain. It is a simple single-system installation without any client agents. It may be installed on either a server or desktop with IIS installed. As a simple click-once application, the user interface may be deployed to any system and authorized user without installation.

The simple, yet concise interface, allows you to easily browse to any given computer or group of computers by following your domain's organization.



*Continued on page 2*

## No-Hassle Code Distribution

By Roy Chastain

Now many of you may think that CertMinder is a cool product and you are right, it is, but AppDep is the product that will turn the heads of geeks, everywhere. AppDep is the short name for the Application Deployment System. We have been delivering products with this great little application for over a year and have decided to share our good fortune (for a small fee of course) with developers, the world over.

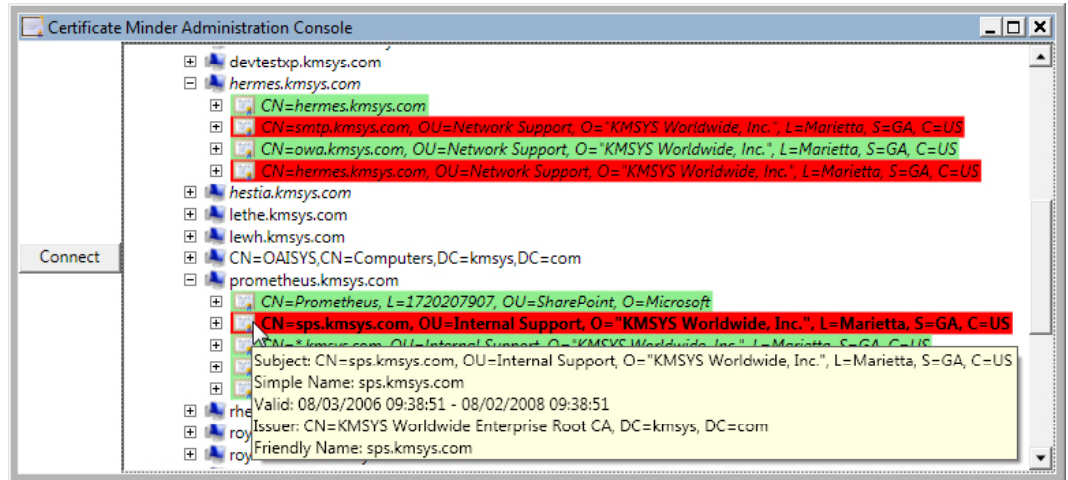
Okay, I hear you, "Enough of the build-up." You want me to get to the point of what AppDep is and what it does. Simply put, AppDep is a managed code, click-once application that can deliver and run non-managed code applications as if they were managed code applications. It allows you say goodbye to INF and CAB files and all the other problems associated with using Authenticode Download, including user privilege issues. Yes, you heard me correctly; a typical user with no extra privileges can download and activate an application published with AppDep. The published product can even use previously uninstalled COM objects. I know that most of you might find this claim hard to swallow. I know my eyes rolled for a bit after I was

asked to make that aspect work. Anyway, just contact us for an evaluation copy to alleviate your doubts. One thing to note is that the code being deployed by AppDep must include a main program. In other words, you cannot use AppDep to replace Authenticode Download for just an OCX that is hosted in a browser. (Sorry about that, but I have not figured out a way to make that work....)

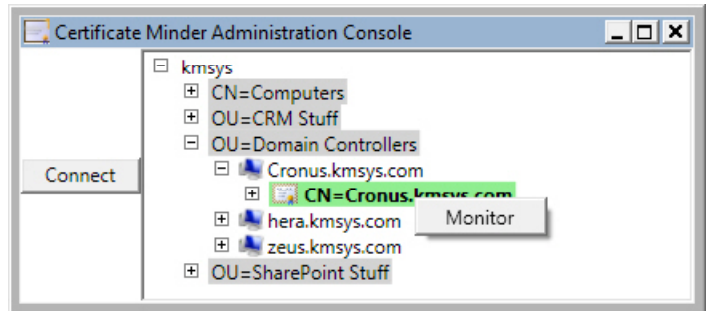
Seriously, AppDep can vastly improve the user experience and reduce support calls. We had a couple of products that were delivered to the end user as OCXs and DLLs via Authenticode Download. This method barely worked on Win9X and unsecured XP systems. Any site on Vista, or with actual user security on XP, immediately ran into problems. They either needed a MSI file to install the OCXs via Group Policy, or they sent someone with administrator credentials to every system to download and deploy the CAB file. We rethought this methodology and, since the OCXs were really portions of a full product, we now deliver the full product via AppDep. The removal of IE as a host for the OCXs has not only improved product delivery, it has improved product stability and the entire user experience.

CertMinder - continued from page 1

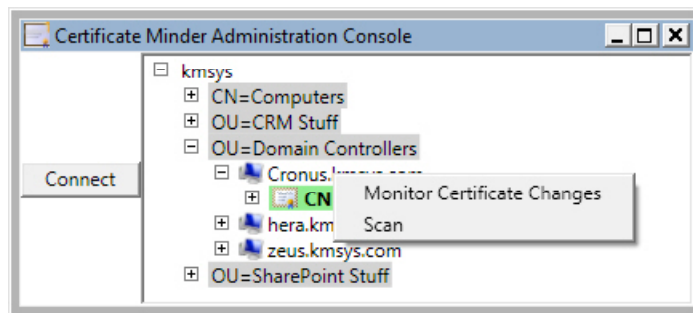
Once the desired system is identified, you can easily determine its monitoring status. Simply expanding the system's node will allow you to see the status of all the installed certificates. Placing the mouse over a certificate provides a tool tip with the complete certificate information.



Simple right-click context menus allow you to select a certificate for expiration monitoring and notification. They also allow you to select a system to be monitored for certificate additions.



Normally, selected systems are crawled on a periodic basis, but you can also force a real-time scan of the certificates currently on a system.



The server portion of CertMinder is an installable service that maintains a jet database so that it does not require the use of an SQL server. After each periodic crawl, the service sends an email to configurable list of addresses for notification of significant events. These events include a certificate

entering its expiration warning period, a certificate expiring and the addition of new certificates to a monitored system.

CertMinder is an easy to install, maintain and use tool that just might save you a lot of time and grief one day by preventing that call from your boss asking you why the SSL certificate on the website has expired.



Installation Conundrum

**Q:** I noticed that your zip file for the eXpress Plus product, contains both a .MSI and .EXE file. Which one should I use and why?

**A:** You should use the .EXE file. When this file is executed, it checks the target system for software dependencies, such as the .NET Framework. The .MSI is a standard Microsoft Installer file.

# Greetings from KMSYS South

Lew Holley, Proprietor

About a year ago, I got to thinking about where I lived and where I would like to live. My home was in rural Atlanta and had been for some 28 years. I had always enjoyed the wooded location with an abundance of wildlife and easy access to theaters, good restaurants and friends. Over the years, friends began to move on as the area changed. While I slept, Atlanta had become a boomtown and had stretched out to the 'burbs - more traffic, more people and more headaches. It was finally time for me to make a change.

I first thought about moving further north. Having lived in Roswell (north of Atlanta), I could move above Alpharetta or Cummings but would soon find myself in Appalachia strumming

virtually none. I had done my homework and picked a reputable builder whose more than attentive people guided me every step of the way. If you are wondering who these paragons are, they are the ladies of Ryland Homes (hat's off to Patty, Aleah, Velma and Joanna). A good construction company, coupled with good advice from friends, saw me successfully through the entire process.

The moving experience was another story. It took me months to cleanout 28 years of clutter. Who knows whom I threw away? I found items that I didn't even know I had. There was a weed eater, an axe and a log splitter — and I lived in an apartment. I cleaned, sneezed and pitched for two months solid. I packed everything in advance, but when moving day came (November 4), there was complete organized chaos. All I could do was get out of the way and watch the movers do their thing. In less than six hours, the truck was loaded and on its way ... and so was I. When everything arrived on the other end, there was a lot less hassle. The movers did a good job and put up with all my supervision and redirection.

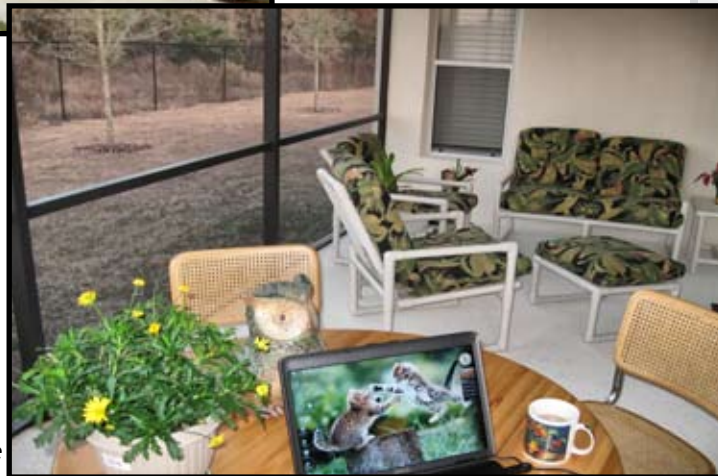


the theme of Deliverance on a banjo. Besides, I wanted some place warmer and south seemed the right direction.

My job was no longer keeping me grounded to Atlanta. With the advances in technology, I could telecommute from almost anywhere. In fact, I had been telecommuting from home for quite some time and it was this fact that inspired me to consider migrating.

I found a little town north of Tampa, Florida, called Spring Hill. It was a good location near family, and the price of the house was within my budget. In April of 2008, I started the construction on a one-story bungalow in an active adult community (that's code for old geezers only). The house is 1,850 square feet with three bedrooms, two baths, double garage, screened-in lanai (that's Hawaiian for porch) and an office. The office is the smallest room, but not having had one before, it is a real luxury.

I anticipated all kinds of problems with construction, especially when attempting it by long distance. To my pleasant surprise, there was



By Thanksgiving, I had completely unpacked and was feeding the entire family with a 16-pound bird plus all the fixins'. I am glad to be settled and am thoroughly enjoying the new digs. Telecommuting has never been better, as I sit here writing this greeting from Florida — on my veranda (that's Southern for porch) — in 70° weather.

Hope you all have a happy and prosperous 2009,  
Lew Holley  
Technical Services



Editor/Design: Bob Moffa, Jr.  
Contributors: Lew Holley, Roy Chastain

Q-Tips is distributed by KMSYS Worldwide, Inc. as a means of staying in touch with its customers and maintaining a high level of customer awareness.

Q-Tips is copyrighted © 1983-2008 by KMSYS Worldwide, Inc. All rights reserved. Address all correspondence to:  
KMSYS Worldwide, Attn: Q-Tips  
1905 Woodstock Road  
Suite 2100  
Roswell, GA 30075, U.S.A.  
E-mail: sales@kmsys.com

All trademarks and registered trademarks are the property of their respective owners.

Business:  
Phone: 770.635.6350  
Fax: 770.635.6351

Product Information:  
Phone: 770.635.6350  
Fax: 770.635.6351  
E-mail: sales@kmsys.com

Technical Support:  
Phone: 770.635.6363  
Fax: 770.635.6351  
E-mail: support@kmsys.com

Web Site:  
www.kmsys.com