

# Q-Tips

## In This Issue:

Power Tools: Right There in Your Emulator

Looking Back at the Shows of 2006

Questions and Answers

## Power Tools Right There in Your Emulator

In an effort to illustrate the power available in the eXpress product line, we are now including a file transfer script and dialog form available with the installation of UTS eXpress Plus, UTS eXpress Pro and UTS eXpress Net. This article reveals how the dialog and script was developed and under what circumstances they are suitable for your use. Note: This capability is not available for the eXpress IT series, as IT utilizes macros only.

The script and dialog form work together to perform an FTP file transfer to or from a ClearPath Plus OS 2200 mainframe platform. The pair forms an application that can be initiated using a script menu selection or action key from within the eXpress emulator. The only requirement for usage is that FTP software be present on both the PC and the host mainframe. The application was developed on a PC running UTS eXpress Plus and FTP bundled with Windows XP. On the host, TCP/IP Application Services (TAS) completes the package.

Note: Where this application was developed for use with an OS 2200 system, it could possibly be adapted for use with MCP and FTAM.



FTP file transfer dialog as seen by user.

The application was developed with the Dialog Form Designer, which is installed along with each eXpress product. The Dialog Form Designer is a rapid application development tool that allows forms to be easily developed for use within eXpress. Each form is loaded and controlled from an eXpress script. A form consists of Windows controls such as buttons, check boxes, list boxes, etc. Controls are applied to a form through standard “point-and-click” and “drag-and-drop” technology. Each control can have an associated action that will be performed when the user selects the control. Each control also has a group of properties that allow you to give it a name

Continued Page 2

## Current Release Levels

eQuate	3.0
eQuate Web	3.0
Host Gateway Server	1.0
InfoQuest	5R6
I-QU PLUS-1	11R6
I-QU ReorgComposer	3R1
Q-LINK	6R6
QPlex Client	4.0
QPlex Server	1.0
QPlexView	4.0
T27 eXpress Family	4.0
(IT, Plus, Net and Pro)	
UTS eXpress Family	4.0
(IT, Plus, Net and Pro)	

Contact KMSYS Worldwide, Inc. if you need an upgrade.

## Looking Back at the Shows of 2006

Another year has come and gone, but what a great year it was. KMSYS Worldwide has been very busy with a more active show schedule than in the past. It was a privilege to be present at the three Unisys Future Matters shows in Europe, and we look forward to attending more of those in the the years to come. From Europe, it was back to the States to exhibit at the UNITE Annual Technology Conference.

This year, UNITE was held in sunny southern California, which proved to be quite a jaunt for one of our staff who was in Sweden just two days prior with Unisys Future Matters. He made it just in time with a short layover with his family, in between.

The conference was amazing this year and we saw renewed interest and activity. There were more attendees than in recent years, and they were very enthusiastic about the event as a whole. It was a great show, and one that we hope will provide momentum for future shows. UNITE is North America's premiere show and we need to all pitch in and keep it a success, since it is a benefit to us all. The next UNITE conference is September '07 in Valley Forge, Pennsylvania, and we are already making plans – we hope you are also.

Power Tools - Continued

to which you can refer in an action or script, choose a font, set an edit mask, etc. – all standard Windows stuff.

An eXpress application, with script and dialog form, is comprised of three file types: a script file (.bas or binary .bax for security), a binary form file (.bfm) and an action file (.act). The binary form file and action file have the same file name and are maintained by the Dialog form Designer. The script file is maintained by the eXpress Plus Script Editor program, also included with the installation of eXpress. The file transfer example shown here is contained in three files (ftpxfer.bas, ftp.act and ftp.bfm) and may be edited locally once eXpress is installed. The form files are located in the installation directory while the script file is in the Scripts directory (usually, C:\Documents and Settings\\Application Data\KMSys\UTS\_EXPRESS\_PLUS32\_4.0\CONFIGURATION).

The Dialog Form Designer has four visible components when running:

- 1) Toolbar for adding form controls,
- 2) The form being designed,
- 3) Control property editor,
- 4) Action script editor.

The control toolbar (Figure 1) looks the same for all forms designed. The bottom



Figure 1: The Control Toolbar.

row of buttons is a list of Windows controls from which you may click one prior to clicking on a blank spot on the design form.

Doing so will place the control on the form.

The design form shows the various controls that have been placed on the form during the design process. Clicking on any control will change the list of available properties in the Property Editor (Figure 2).

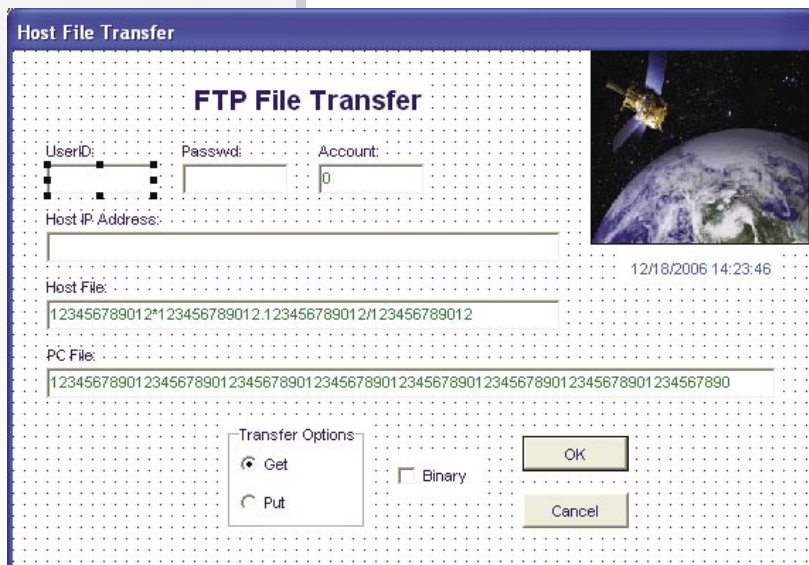


Figure 2: The Design Form is the canvas on which the dialog is created.

Each control has a unique set of properties as can be seen for the TB\_UserID property (Figure 3). To change a property, simply click the property and make the change to the right.

The Dialog Form Action Script Editor allows you to establish a different set of actions for each control that the user may select. The actions may consist of editing functions, file and directory manipulation, calling other applications, etc.

In the image below, an action writes the required file transfer information to a file with the Print # statement when the form is closed (Figure 4). At that time, the script will resume control and perform the actual file transfer.

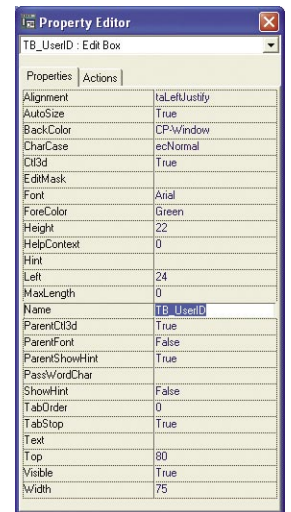


Figure 3: The Property Editor makes it simple to change any value associated with a control.

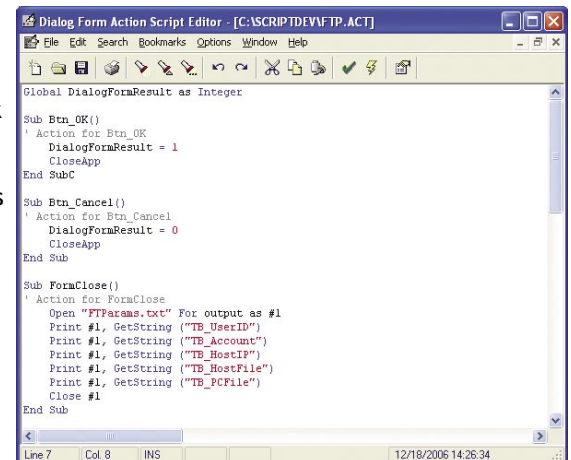


Figure 4: The powerful Dialog Action Script Editor provides the means to create helpful and time-saving "mini programs".

The eXpress script that loads and interfaces with the dialog is shown on the following page. Notice how few statements are actually required to interact with the dialog.

We at KMSYS Worldwide hope this little example will encourage you to realize the power and potential available to you through eXpress scripting and dialog forms design. Try one of your own. It's fun and easy!

## Power Tools - Continued

Below is the eXpress script that loads and interfaces with the FTP dialog:

```
Sub Main()
  Dim X, Msg
  Set df = CreateObject("TEQDlgFormx.TEQDlgForm")
  df.LoadDialogForm("C:\Program Files\KMSystems\UTSPlus32\4.0\ftp.bfm")
  df.SetString "TB_HostIP", "system.domain.com"
  df.SetString "TB_HostFile", "qual*file.elt/vers"
  df.SetString "TB_PCFile", "FTPFile.txt"
  df.ShowDialogForm
  If df.DialogResult = 1 Then
    ChDrive "c:"
    ChDir ""
    X = Shell("cmd.exe", 1)      ` Shell DOS.
  Wait 1000
  Open "FTPCmds.txt" For Output as #1
  Print #1, df.GetString ("TB_UserID")
  Print #1, df.GetString ("TB_Passwd")
  Print #1, df.GetString ("TB_Account")
  Y = df.GetChecked ("CB_Binary")
  If df.GetChecked ("CB_Binary") = 1 Then
    Print #1, "BINARY"
  End If
  If df.ListGetIndex ("BG_Opts") = 0 Then
    Print #1, "GET " & df.GetString ("TB_HostFile") & " " _
      & df.GetString ("TB_PCFile")
  Else
    Print #1, "PUT " & df.GetString ("TB_PCFile") & " " _
      & df.GetString ("TB_HostFile")
  End If
  Print #1, "Bye"
  Close #1
  SendKeys "ftp -s:FTPCmds.txt " & df.GetString ("TB_HostIP") & "~"
  Msg = "Click OK after FTP session complete and TELNET is closed."
  MsgBox Msg, 0, "Please Wait for BYE"      ` Display OK prompt.
  AppActivate "c:\windows\system32\cmd.exe" ` Return focus to DOS.
  SendKeys "exit~"      ` Exit DOS.
End If
End Sub
```

**Q.** I am wondering if it is possible to copy the configuration that I am using on a stand-alone version of T27 eXpress Plus to work with the Net version? An example would be the keyboard configuration where I have produced many different keyboards for our stand-alone version so I could get them to work with the Net version, or would I have to recreate all the keyboards that I have created on the stand-alone version?

*Note: The following answer also applies to the UTS eXpress product line with the appropriate directory name changes.*

**A.** The emulator that you use with the stand-alone T27 eXpress Plus is the same program that is used with the network version, T27 eXpress Net. You can configure keyboards, scripts, etc. with the stand-alone emulator, or the network emulator when configured as a "Power User," then manually copy the configured files to the appropriate directories for the network version.

When you configure with the emulator, it places the configured files into directories set aside for that purpose. They are located in the Windows standard application data directory. The five directories are: Appearance, Keyboards, Scripts, ToolBars, Xlate. These same five directories are used by T27 eXpress Net but are located in a file server location of your choice. You make this choice when you install T27 eXpress Net. Simply copy the contents of those directories to the file server location.

In the T27 eXpress Plus Administration Program, you specify what capabilities each user or user profile group has regarding configuration, keyboards/scripts usage, etc.



## Q-Tips

Editor/Design: Bob Moffa, Jr.  
Contributor: Lew Holley

Q-Tips is distributed by KMSYS Worldwide, Inc. as a means of staying in touch with its customers and maintaining a high level of customer awareness.

Q-Tips is copyrighted © 1983-2007 by KMSYS Worldwide, Inc. All rights reserved. Address all correspondence to:  
KMSYS Worldwide, Attn: Q-Tips  
3225 Shallowford Road  
Suite 1000,  
Marietta, GA 30062, U.S.A.  
E-mail: sales@kmsys.com

All trademarks and registered trademarks are the property of their respective owners.

Business:  
Phone: 770.635.6350  
Fax: 770.635.6351

Product Information:  
Phone: 770.635.6350  
Fax: 770.635.6351  
E-mail: sales@kmsys.com

Technical Support:  
Phone: 770.635.6363  
Fax: 770.635.6351  
E-mail: support@kmsys.com

Web Site:  
www.kmsys.com



## Do you know who is listening to your data transactions?

Host Gateway Server (HGS) provides a safeguard to all sensitive and regulated data.

- Secure Data Transmission Over Public Networks
- Prevent Man-in-the-Middle Attacks
- Encrypt Sensitive Transmissions
- Authenticate Server's Identification to Client
- Deploy T27 and UTS Protocol over SSL
- Realize Low Total Cost of Ownership
- Eliminate the Need for VPN
- Integrate Seamlessly with Other KMSYS Worldwide Software

KMSYS Worldwide, Inc.  
3225 Shallowford Road  
Suite 1000  
Marietta, GA 30062  
U.S.A.

