

A Free Newsletter for
Unisys Users from



Q-Tips

In This Issue:

Defending Today's Embattled Data with Host Gateway Server

Case Study: Viking Electric Supply Taps T27 eXpress

Questions and Answers

Defending Today's Embattled Data with Host Gateway Server A Prospective on Security

We have heard a lot of talk about SSL encryption and authentication, but how important is it, really? Is it something that is a passing fad or is it here to stay? It's real, alright. And we are bringing it to you.

While security benefits provided by SSL have enjoyed widespread use in standard protocols such as HTTP for many years, they are just becoming available to users of Unisys ClearPath Plus servers.

For many years, IT management and corporate security officers have expressed concern about the security of the data entering and leaving legacy systems but concluded that there were no tractable solutions available. There is a pent-up demand for the security provided by SSL for legacy data and applications that will fuel an upswing in deployment of UTS and T27 protocols over SSL.

All IT shops realize that they need data security and integrity. It may be because they have extremely sensitive data that they want to keep safe from LAN sniffers or they may have users accessing their mainframes over public networks. Utilizing UTS or T27 over SSL provides a lower total cost of ownership and simpler support and deployment than normal VPN solutions for remote clients.

KMSYS Worldwide has developed a product, Host Gateway Server (HGS), that provides UTS



Continued Page 2

Current Release Levels

eQuate	3.0
eQuate Web	3.0
Host Gateway Server	1.0
InfoQuest	5R6
I-QU PLUS-1	11R6
I-QU ReorgComposer	3R1
Q-LINK	6R6
QPlex Client	4.0
QPlex Server	1.0
QPlexView	4.0
T27 eXpress Family (IT, Plus, Net and Pro)	4.0
UTS eXpress Family (IT, Plus, Net and Pro)	4.0

Contact KMSYS Worldwide, Inc. if you need an upgrade.

Viking Electric Supply Taps T27 eXpress A Case Study from Their Point of View

Requisite: High maintenance, restrictive software and escalating hardware requirements necessitated finding a more flexible emulation solution.

Proposal: Companywide migration to T27 eXpress Plus.

Conclusion: Significant savings with greater functionality and responsiveness.

Ed Anderson is the IT Platform Manager with Viking Electric Supply, and is responsible for the operational integrity and infrastructure for production and development mainframes, as well as a number of critical Windows-based servers.

Recently, Mr. Anderson was kind enough to take the time to talk to us about his experience while searching for a replacement for Viking's emulation software. What follows is an abbreviated version of his response to our customer satisfaction questionnaire.

For what does your company use Unisys mainframes and what types of servers are utilized?

Viking uses a Unisys CS-7101 for primary production, including order processing, warehouse management, logistics, forecasting, and purchasing. We run Lawson Software's financials suite on the Open Systems side of the box, and communicate between the MCP and Open systems via MQ server. Last year, we purchased a small LX-7100 mainframe for use in development and test, enabling us to free up more capacity on the production mainframe. Recently, we took delivery of a Libra 595 mainframe to replace the CS-7101.

Continued Page 2

Security - Continued

and T27 protocols over SSL. It allows for both authentication and encryption. When HGS is placed on a private wire connected to the 2200 or MCP host, it provides a secure channel for data sent and received by the mainframe.

By providing a proxy that implements UTS or T27 over SSL, HGS allows for the secure transmission of data to and from a ClearPath host. When an organization deploys products in the eXpress, eQuate and QPlex families with HGS, it will be assured data protection at industry standard levels.

All IT shops realize that they need data security and integrity.

Security in the Unisys market, as in all markets, is constantly changing. For many years, mainframes relied on simple userid/password authentication systems, but they were normally considered secure. Many of the reasons cited for faith in the safety of legacy host systems were mostly “wishful thinking” because administrators knew that there were no options available to improve the situation.

Finally, options are available, and the Unisys market will react to its increased choices.

KMSYS Worldwide offers HGS along with completely compatible versions of the eQuate, eXpress and QPlex products that attach via UTS or T27 over SSL. It is now essential to spread the word to the Unisys marketplace that there is a better, yet cost effective, solution.

While KMSYS Worldwide does not provide security products, per se, we do endeavor to provide secure products. Our programming staff has long understood the importance of validating data, checking buffer sizes and preventing many other maladies that are routinely blamed for errant code and system attacks.

Now, development is going beyond that mind set. The security of a product has become the first priority in the design process: how the product will interact with the operating system environment, what privileges it will require to operate and install, and how to minimize its security risk are the first questions asked and answered in the design of a product or a new feature. This design imperative and attention to detail will make future products from KMSYS Worldwide, Inc. easier to install and maintain in a secured environment.

Viking Case Study - Continued

Viking's new GUI, which Mr. Anderson developed via the Dialog Form Designer packaged with eXpress.

What was the reason that your company started the search for an emulator?

We were dissatisfied with our previous emulation services vendor. They were responsive enough to our requests for service or information, but their yearly maintenance was quite expensive.

Also, because all communications with the mainframe had to go through their proprietary server, that little server represented a single point of failure that we were increasingly unable to abide.

The last straw, however, was that if we wanted to upgrade to a Unisys Libra mainframe, we would have to purchase additional equipment at a significant price, just to be able to keep using our old vendor's emulator.

What made KMSYS Worldwide different from its competitors?

I spoke briefly with a KMSYS representative at the

[UNITE] display booth, and told him about my experiences. He demonstrated the eXpress Plus product, as well as eXpress Chart and some dialog forms that really spiced up the interface. I was favorably impressed, but not ready to make a move yet.

When we were ready to start thinking seriously about moving, I contacted KMSYS, as well as a couple other competitors. One competitor's product was simply too underdeveloped to be able to address our needs. Another was overdeveloped, and their reps, too interested in telling me all the other things I could do with their product, to take the time to tell me how to do what I actually wanted to do. Their price reflected their vast capabilities list too.

KMSYS confidently assured me that eXpress Plus would do exactly what I needed, and at a price that was right.

Q: This is in reference to a case study written about in Q-Tips regarding a customer in Portugal. In particular I was interested in this statement: "It was also necessary to generate and install a separate mode of I-QU PLUS-1 to allow for the user written CALC algorithms being employed".

We have started to employ user CALC routines. We sanitize sensitive data in our test systems. When these fields are CALC keys, we are not able to use the single thread DMR [included with I-QU] and must run our I-QU programs with the areas up in multi-thread in order to use our own CALC algorithm. In reading the above statement I thought it perhaps alludes to our own needs and was curious to know if there is an alternative that we are not aware of, so that we may down the areas and run through the ST DMR.

A: Their user CALC routines were written in COBOL and were easy enough to collect with I-QU if you follow the procedure laid out in the I-QU Installation Guide. This is required for the single-thread interface. Nothing special had to be done for the multi-thread side.

That statement about having to gen and install a separate mode of I-QU for the user CALC was not quite accurate. We did not actually have to install a second mode, but did so since unexpected changes were made to the user

CALC algorithm. We wanted the ability to execute I-QU with the old algorithm (before the unexpected changes) and the new. This required two modes since you cannot have two versions of the same algorithm included in the same collection of I-QU.

In normal circumstances, you don't need the old algorithm as the records are unloaded in page number sequence where the CALC algorithm is not used. You only need the new algorithm on the reload for record placement.

On another note, there is the problem of CALC simulation (CALCSIM) in the unload to get the new CALC page number so you can presort records for an efficient CALC load. Since the user CALC routines were written in COBOL, it was not possible to collect in I-QU for inclusion with CALSIM. The requirement here is that the routines must be "old CALC" for this inclusion; i.e., ASM or MASM.

Note: They can be included for STORE but not for CALSIM.

What we did to get around this was to convert the COBOL code to I-QU code and simply include it in the unload program. This proved to be a very tricky effort, since their CALC key was a mixture of COMP and exact binary (PIC 1).

All considering, we think you should be able to incorporate your user CALC into I-QU with little effort. ■



Why did you choose T27 eXpress Plus over competitors' products?

First, T27 eXpress Plus can do the job. We looked at a couple emulators that simply did not have the capability to meet our needs, which was too bad, because they were certainly priced right — one of them was free. (I guess you get what you pay for.)

Second, T27 eXpress Plus does the job without breaking the bank. The initial licensing fee and annual maintenance are very reasonable.

How much did price enter into your decision?

Pricing was a significant factor. Our initial license fee was comparable to what we were spending before for annual maintenance. The maintenance fee is a fraction of that, and we are looking forward to

significant savings with greater functionality and responsiveness.

How were your final results?

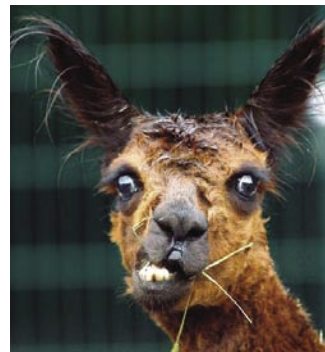
It took no more than three weeks to completely convert Viking's emulation to KMSYS from the competitor with no significant issues from the associates.

We did the cutover at a time of year that is typically a little slower, so if there were any productivity hits, it wouldn't be a major inconvenience, and by the time business was picking back up, everyone was up-to-speed on the new icon on their desktop, and the differences in look-and-feel.

The conversion was an unqualified success for Viking.

Visit www.kmsys.com/Press/CaseStudies for full article.

Say Waht?



Aoccdnrig to rseerach at Cmabrigde Uinervtisy, it deosn't mtttaer in waht oredr the ltteers in a wrod are, the olny iprmoatnt tihng is taht the frist and lsat ltteer be at the rghit plcae. The rset can be a total mses and you can sitll raed it wouthit porbelm. Tihs is bcuseae the huamn mnid deos not raed ervey lteter by istlef, but the wrod as a wlohe.

Amzanig huh? ■

Q-Tips

Editor/Design: Bob Moffa, Jr.
Contributor: Lew Holley

Q-Tips is distributed by KMSYS Worldwide, Inc. as a means of staying in touch with its customers and maintaining a high level of customer awareness.

Q-Tips is copyrighted © 1983-2006 by KMSYS Worldwide, Inc. All rights reserved. Address all correspondence to:
KMSYS Worldwide, Attn: Q-Tips
3225 Shallowford Road
Suite 1000,
Marietta, GA 30062, U.S.A.
E-mail: sales@kmsys.com

All trademarks and registered trademarks are the property of their respective owners.

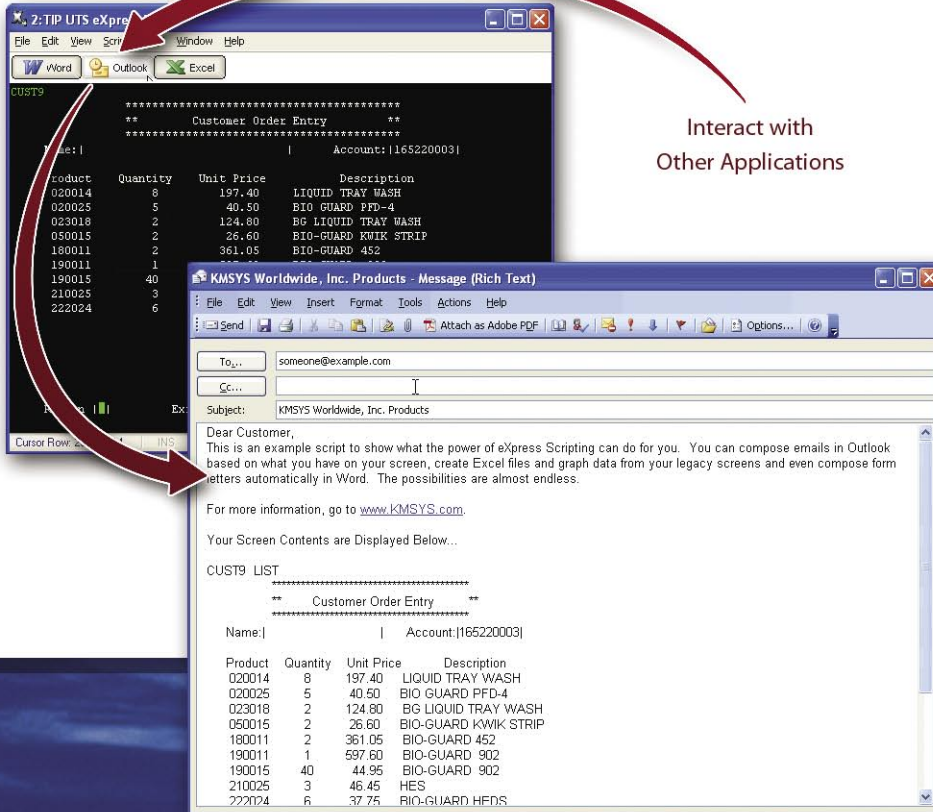
Business:
Phone: 770.635.6350
Fax: 770.635.6351

Product Information:
Phone: 770.635.6350
Fax: 770.635.6351
E-mail: sales@kmsys.com

Technical Support:
Phone: 770.635.6363
Fax: 770.635.6351
E-mail: support@kmsys.com

Web Site:
www.kmsys.com

Integrate Productivity Tools for a Seamless Workflow



Create your own productivity suite with eXpress Scripting.

A powerful feature included in UTS and T27 eXpress terminal emulators, scripting allows eXpress users to do some amazing things, and with the built-in script recorder, it is easier than you might think.

KMSYS Worldwide's scripting capability extends the value of emulation and development to allow easy integration with other Windows applications, such as Microsoft Word, Excel, Access, etc. For example, with the supplied Microsoft Office toolbar, a script will read data from a green screen in eXpress, then format and insert the data into a Word document for review or into an Outlook e-mail for posting.

KMSYS Worldwide, Inc.
3225 Shallowford Road
Suite 1000
Marietta, GA 30062
U.S.A.

