



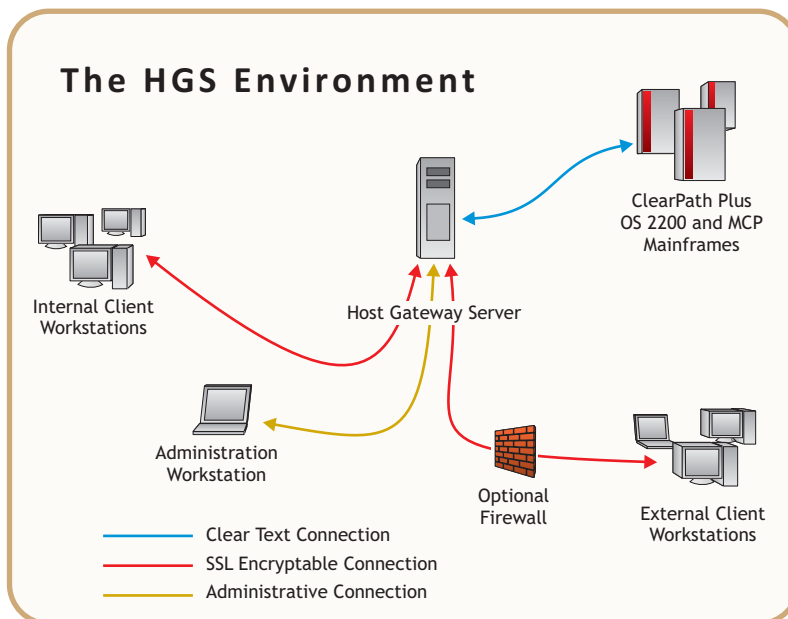
Host Gateway Server

Secure Data Transmission to Unisys Mainframes

OVERVIEW

Many organizations are beginning to realize the need for secure communications to and from legacy mainframes, but they have learned that the legacy mainframe does not provide a secure communication channel. Host Gateway Server (HGS) is the solution for secure connectivity to Unisys ClearPath OS 2200 and MCP servers. Fully compliant with Federal Information Processing Standard (FIPS) 140, Host Gateway Server (HGS) offers a flexible solution to data protection with a mixture of encrypted and non-encrypted connections.

Based on the Microsoft .NET framework, Host Gateway Server provides concurrent support for a variety of clients, from a lightweight browser-based client, to the feature-rich eXpress Plus emulator, to an application modernization product such as eQuate ... all from KMSYS Worldwide. Its support of standard emulators allows an enterprise to leverage its current investment in terminal emulation.



Host Gateway Server – The Universal Connection

KEY BENEFITS

Flexible – Host Gateway Server's multifaceted client support allows an organization to mix and match clients as dictated by application and user requirements.

Easy to Administer – Host Gateway Server has a low total cost of ownership. Utilizing Microsoft's one-touch deployment methodology for the administration tools and ClickOnce technology for browser-based clients, as well as centralized configuration of the client connectivity options, makes Host Gateway Server simple to maintain.

Flexible Security – Host Gateway Server has the ability to accept a mixture of encrypted and non-encrypted connections. This feature allows for secure connections when required, such as from systems outside of the enterprise network, and clear text connections when encryption is not required.

Easy to Configure – There is no need to go to the server to do configuration because all configuration actions may be done remotely. Host Gateway Server offers the same easy-to-configure host connectivity as found in all KMSYS Worldwide emulator solutions.

Does not Require VPNs – Virtual Private Network (VPN) solutions are expensive, complex to deploy and difficult to maintain. With a typical VPN deployment, local network users are presented with different connection scenarios than remote users. The different scenarios are potentially confusing to workers who connect for both the local enterprise network and the internet.

Offers Security not Provided by a Typical VPN Deployment – Host Gateway Server transparently provides encrypted traffic for all desired connections. The typical VPN solution is only deployed for remote connections, which leaves local network traffic in clear text.



Host Gateway Server (Continued)

CLIENTS

Host Gateway Server – Provides a framework for the transmission of encrypted data which enables the following products to have secure data access to and from Unisys mainframes:

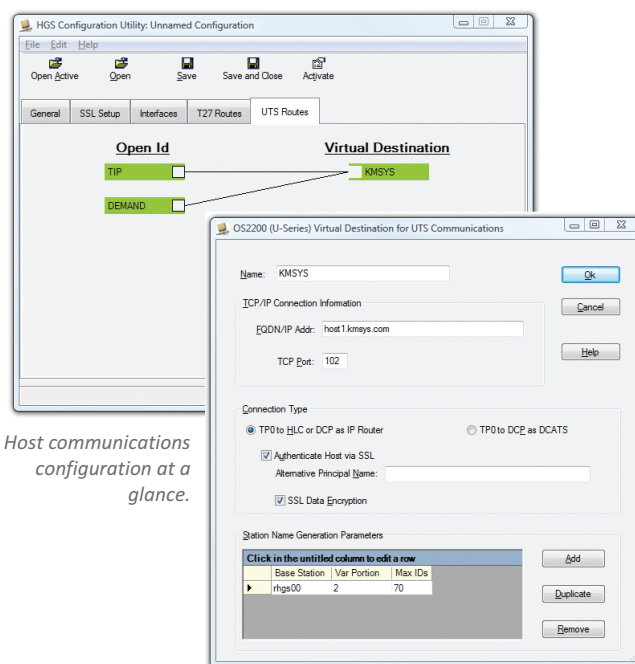
eXpress Plus – Provides full-featured standalone connectivity for information technology professionals and end users alike.

eXpress Pro – Offers the same functionality as eXpress Plus with an added ActiveX control for developing customized Windows applications through host communications.

eQuate – Allows development of Windows and Web applications for existing legacy transactions without making host changes.

QPlex Client – Allows emulation directly from a Web page.

For more information on Host Gateway Server client options, please visit www.kmsys.com or contact a representative.



Host communications configuration at a glance.

TECHNICAL FEATURES

General

- Runs on Microsoft Windows Servers
- Microsoft .NET Framework-based application

Manageability and Maintainability

- Runs as a Windows service
- Local or remote GUI configuration
- Local or remote monitoring

Protocols

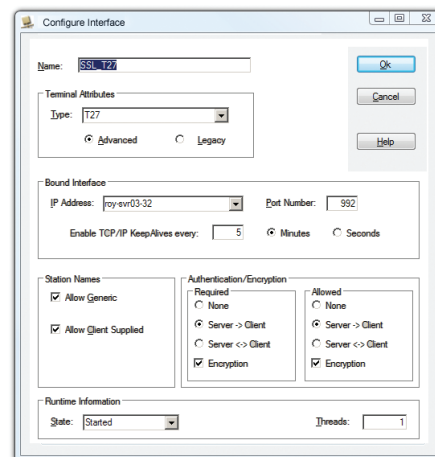
- UTS DCA/Int-1 over TP0
- UTS DCS/Int-1 over TP0S (Secure TP0)
- T27 NDL over Telnet
- T27 NDL over SSL encrypted Telnet

Data Security

- Uses Microsoft supplied SSL routines
- FIPS 140-compliant cryptographic security modules
- Encryption algorithms and key lengths may be negotiated

Licensing

- Licensed by physical or virtual server instance
- Client licenses by client type and count



Configure client connections.