



T27 eXpress Plus Help

Table of Contents

Emulation	1
T27 eXpress Plus Screen	1
File menu	1
Edit menu.....	2
View menu	3
Scripts menu	4
Window menu	4
Help menu.....	4
Input Recall window.....	4
T27 eXpress Plus Keyboard Definition window	5
Send To	5
Send Contents of Screen as Text	5
Send Screen Window as JPEG Attachment	5
Configuration	7
T27 eXpress Plus Configuration	7
Environment tabs (Env. 1 – Env. n)	7
Connection tab.....	7
Video Options tab	8
DataComm Options tab	9
Keyboard Options tab	11
Script and Actions tab	12
Appearance and Keyboard tab.....	14
Restriction Settings/Configure Settings	15
Restriction Settings dialog	15
Use Configuration Lock Options	15
eXpress User Capabilities at a Glance.....	16
Settings Location.....	16
Restricted User Options.....	17
Unlock Configuration.....	18
Apply	18
OK.....	18
Cancel	18
eXpress Plus Script Manager	18
Available Script Files.....	18
Script Menu Entries	19
Change Script Folder	19
Custom Keyboard	19
OK.....	19
Cancel	20
eXpress Custom Terminal Screen Appearance.....	20
Appearance Scheme Name	20
New Scheme.....	20
Rename Scheme	21
Delete Scheme.....	21
Screen Color Settings	21

Screen Font 23

Auto Scaling Mode 24

Default..... 24

Import 24

Export..... 24

Apply 24

OK..... 24

Cancel 24

eXpress Custom Keyboard Layouts 24

 New Keyboard 25

 Rename Keyboard 25

 Delete Keyboard..... 25

 Graphic Keyboard..... 25

 Key Actions 26

 Type a Key Sequence..... 26

 Set Key Assignment..... 26

 Undefine Key 26

 Default..... 26

 Import 26

 Export..... 26

 Print 26

 OK..... 26

 Cancel 26

 How to Map or Re-Map a Key Action 26

 Conflicts..... 26

Add or Redefine Key 26

 Help 26

 Add 27

 Redefine..... 27

 Cancel 27

T27 eXpress Custom Toolbar Design 27

 File menu 27

 Tool Bar Button Display Area 28

 Insert Button 28

 Remove Button 28

 Insert Spacer 28

 Insert Line Break..... 28

 Move 28

 Button Width 28

 Font Size..... 28

 Button Caption..... 29

 Load Bitmap 29

 Clear Bitmap..... 29

 Tool Tip..... 29

 Current Button Action 29

 Assign Action 29

 Select Button Action 29

Close	29
Character Translation Configuration	29
Import	30
Export	30
OK	30
Cancel	30
Character Translation Edit	30
OK	31
Cancel	31
Lock Config. Initial Password	31
New Password	31
Reenter New Password to Confirm	31
OK	31
Cancel	31
Unlock Config. Password	32
Enter Password	32
New Password	32
Reenter New Password to Confirm	32
OK	32
Cancel	32
T27 eXpress Plus Settings	32
Move	32
Cancel	33
Select Directory	33
How to	35
Selecting with the Mouse	35
Tracing T27 eXpress Plus Host Sign-On Activity	35
Running without the Control Panel	35
Configuring T27 Keys	36
Creating a Toolbar Button to Run a Script	36
Applying Colors and Fonts to a Specific Environment	37
Recall Recent Input	37
Displaying T27 eXpress Plus Keyboard Definitions	37
Miscellaneous	39
Command Line Options	39
Font Limitations	39
Technical Support	39
Index	41

Emulation

T27 eXpress Plus Screen

A **T27 eXpress Plus** window contains all the necessary Windows controls to manage a host connection. Controls are available to control the size of the font displayed and the spacing between lines. There are also controls to perform print functions, recall previously entered input, execute user-developed scripts, etc.

When multiple screens are open, you may use the **Esc** key to switch between non-minimized screens. Likewise, the **Next Window** selection from the **Window** menu will switch between non-minimized screens.

The following is an explanation of each menu selection or control. When shortcut keys are available, the key combination (e.g., **Ctrl+L**) is shown to the right of the menu selection.

File menu

The **File** menu contains controls to configure the appearance and behavior of T27 eXpress Plus and to manage the print environment of T27 eXpress Plus.

Print Screen (text only)

Use this selection to print only the text portion of the screen without delimiters.

Note: For passthrough printing, run the T27 eXpress Plus Passthrough Print Manager program.

Print Screen (with delimiters) **Ctrl+P**

Use this selection to print an exact image of the entire screen, including delimiters.

Print Unprotected

Use this selection to print only the unprotected text on the screen.

Print Capture

Use this toggle in conjunction with the Print commands to capture screen images and save them to a text file. When this selection is checked, the Select Print Text File dialog appears allowing you to select a text file in which to save the images. Next, use one of the Print commands to write the screen image to the file. Multiple screens may be saved by using multiple Print commands. To close the text file, select Print Capture again.

Print Window Image

Use this selection to print the entire window including the screen and the Windows controls surrounding the screen.

Printer Setup...

Use this selection to select a printer for use in future print operations.

Capture Screen **Alt+Shift+Backspace**

Use this selection to capture the currently selected screen.

Print Captured Screens

Use this selection to print any captured screens.

Save Captured Screens

Use this selection to save any captured screens to a text file.

Clear Captured Screens

Use this selection to clear the captured screen stack.

Send To...

Use this button to send a copy of the screen through your mail system.

Diagnostics

Trace to Window

Use this selection to initiate the T27 eXpress Plus trace facility. All communications between T27 eXpress Plus and the host will be displayed in a separate window.

Note: A right mouse click in the trace window will reveal a menu containing three selections that control the trace window: **Stay on Top**, **Copy to Clipboard** and **Clear**. **Stay on Top** controls whether the trace window remains on top (the default) of the emulator window during the trace, or remains in the background. **Copy to Clipboard**

may be used to copy the contents of the trace window to the Windows clipboard for subsequent pasting into another Windows application (e.g., Notepad, Word, etc.). **Clear** may be used to clear the contents of the trace window.

Trace to File

Use this selection to initiate the T27 eXpress Plus trace facility. This selection is the same as Trace to Window except that the trace information will be written to a user-named file.

Trace to Both Window and File

Use this selection to initiate the T27 eXpress Plus trace facility. This selection is a combination of the two above.

Clear Trace Window

Use this selection to clear the trace window and/or file without terminating the trace. This selection appears after a trace has been initiated.

Close Trace

Use this selection to close the trace window and/or file and terminate the trace.

FCC Map

Use this selection to display an FCC Map. Use only at the request of KMSYS Worldwide's support personnel.

Control Page

Use this selection to display the contents of the UTS Control Page in the trace window and/or file.

Note: The last four selections only become visible once the trace has been started.

Customize

Use this selection to customize the appearance and functionality of this screen. Note: All of these settings may also be changed from the configuration program.

Custom Keyboard Layout

Use this selection to modify a keyboard configuration. The initial configuration shown will be for the keyboard assigned to this screen.

Select Keyboard Layout

Use this selection to assign a preconfigured keyboard to this screen.

Custom Tool Bar Designer

Use this selection to modify a tool bar configuration. The initial configuration shown will be for a tool bar with one unassigned button. A default tool bar is available from the File menu of the Custom Tool Bar Designer window.

Select Custom Tool Bar

Use this selection to assign a preconfigured tool bar to this screen.

Screen Appearance

Use this selection to modify a screen appearance scheme. The initial configuration shown will be for the scheme assigned to this screen.

Select Screen Appearance

Use this selection to assign a preconfigured screen appearance to this screen.

Close

Use this selection to break the host connection and terminate this T27 eXpress Plus window.

Edit menu

The **Edit** menu contains controls to manage selected text between the screen and the Windows clipboard.

Copy Ctrl+C

Use this selection to copy selected data onto the clipboard. This command is unavailable if there is no data currently selected. Note: Copying data to the clipboard replaces the contents previously stored there.

Data may be selected by placing the mouse cursor at some point on the screen, and holding down the left mouse button, drag the mouse cursor to any other location on the screen. Upon releasing the left mouse button, the data will be selected.

An alternate form of selection is with standard, keyboard key sequences. With the mouse or arrow keys, place the screen text cursor at some point on the screen and use any of the following key sequences to highlight the data being selected:

Shift+Home selects everything from the cursor position through column one of the same row.

Shift+End selects everything from the cursor position through the last column of the same row.

Shift+Right Arrow extends/contracts the selection to the right.

Shift+Down Arrow extends/contracts the selection down the screen.

Shift+Left Arrow extends/contracts the selection to the left.

Shift+UP Arrow extends/contracts the selection up the screen.

Cut Ctrl+X

Use this selection to remove the currently selected data from the document and put it on the clipboard. This command is unavailable if there is no data currently selected.

Cutting data to the clipboard replaces the contents previously stored there.

Paste Ctrl+V

Use this selection to insert a copy of the clipboard contents at the insertion point. This command is unavailable if the clipboard is empty.

Note: Use a right mouse click anywhere on the screen to reveal a **Copy/Cut/Paste** popup menu.

Input Recall Ctrl+I

Use this selection to initiate the Input Recall window. This selection allows previous lines transmitted to the host to be recalled and retransmitted.

Rectangle Block Selection

This option allows the selection of text as a rectangle. When the left mouse button is held down and the mouse cursor dragged diagonally across the screen, a rectangular block of text is selected.

Linear Block Selection

This option allows the selection of text as a block of lines. When the left mouse cursor is held down and the mouse cursor is dragged up or down, each line that the mouse cursor passes through will be selected.

View menu

The **View** menu contains controls that adjust the appearance and functional state of T27 eXpress Plus.

Show Toolbar

Use this selection to toggle the display of a T27 eXpress Plus toolbar.

Custom Tool Bar Position

Use this option to place the tool bar at the top or bottom of the window.

Tool Bar at Top

Make this selection to place the tool bar immediately above the screen area. Note: Show Custom Tool Bar must be checked for this option to work.

Tool Bar at Bottom

Make this selection to place the tool bar immediately below the screen area. Note: Show Custom Tool Bar must be checked for this option to work.

Keyboard Window... Alt+K

Use this selection to display the T27 eXpress Plus Keyboard Definition window.

Show Mouse Tracking

Use this selection to toggle between displaying the mouse pointer's row and column and the text cursor's row and column. The display appears on the left side of the status bar at the bottom of the screen. This feature allows the user to determine row and column coordinates of protected fields, which can be handy for scriptwriters.

Show Reference Grid

Use this selection to toggle the display of a reference grid over the screen. The grid is useful when developing scripts. The reference grid makes it easy to find column/row coordinates while

a script dialog is displayed. You cannot use mouse tracking once a script dialog is up, but you can see and count lines and columns on the reference grid.

Show Control Characters

Use this selection to toggle the display of control characters (Tab, Form-Feed, Line-Feed, etc.).

Scripts menu

The **Scripts** menu contains user-developed scripts and one entry to link a previously developed sign-on script to the screen.

User-defined Script Name

Use the **Script Manager** button on the T27 eXpress Plus Control Panel to develop and maintain Enable Scripts and the **Scripts** menu.

Select Sign-On Script

Use this selection to initiate the **Select Sign-On Script for Screen** window and link a previously developed script to the currently selected screen. The next time the screen is opened, the linked script will be automatically executed.

Select Run-Script Menu

Use this selection to assign a menu to this screen. Use the Script Manager selection to design and maintain scripts and script menus.

Script Manager

Use this selection to open the Script Manager dialog. Use the Script Manager to create and maintain scripts and script menus.

Record Script

Choose this selection to start recording activities in the currently selected screen. Note: When the recorder starts, this menu item changes to **End Recording Script**.

Window menu

The **Window** menu contains a selection controlling the T27 eXpress Plus window size in relationship to the font size.

Resize Window to Font

Use this selection to resize the T27 eXpress Plus window to conform to the selected font size.

Hide Control Panel/Show Control Panel

This toggle hides or displays the T27 eXpress Plus Control Panel. Note: If all screens are closed while the Control Panel is hidden, the Control Panel will be automatically displayed. This menu item is disabled if the NCP (No Control Panel) command line parameter is used.

Next Window Ctrl+Page Down

Use this selection to switch between non-minimized screens.

Help menu

The **Help** menu contains selections that provide complete on-line help and T27 keyboard assistance.

Contents

Use this selection to run Windows Help for T27 eXpress Plus and display the **Contents** topic. All on-line help may be reached from this topic.

This Window

Use this selection to run Windows Help for T27 eXpress Plus and display this topic.

About

Use this selection to display version and copyright about T27 eXpress Plus.

Input Recall window

T27 eXpress Plus, when in non-forms mode, saves single-line messages sent to the host system when you press the transmit key. A maximum of 200 of the most recent messages is saved. You can display a list of these messages from the **Edit, Input Recall** menu selection, or by pressing the **Input Recall** key (**Ctrl+I**).

Paste

When this list is displayed in the **Input Recall** window, you can view the entries and optionally select an entry to be "pasted" onto the current screen when the **Paste** button is pressed.

Transmit

The **Transmit** button performs the same operation as the **Paste** button, but also ends by transmitting to the host (double clicking on the entry also performs the paste-and-transmit operation).

Close

Use this button to close the **Input Recall** window.

T27 eXpress Plus Keyboard Definition window

This window displays all the standard T27 keys and their corresponding keyboard keystrokes. Any T27 key may be issued by double-clicking the left mouse button over the T27 key name. Additionally, the window may remain open as a visual reference when entering T27 key sequences from the keyboard.

Stay on Top

Check this box to force the window to remain visible while working on an emulator screen.

Keep Active on Show

Check this box to keep focus on the **T27 eXpress Plus Keyboard Definition** window when the window first comes up. When not checked, focus will immediately return to the main emulator window.

Close

Use this button to close the **T27 eXpress Plus Keyboard Definition** window.

Send To ...

Use this dialog to select the Send option desired.

Send Contents of Screen as Text

Set this option to capture the contents of the screen as text. When the **OK** button is pressed, the text will appear in the message portion of the compose dialog displayed by your mail system.

Send Screen Window as JPEG Attachment

Set this option to capture the contents of the screen as a JPEG image. When the **OK** button is pressed, the image will be inserted as an attachment to your mail message.

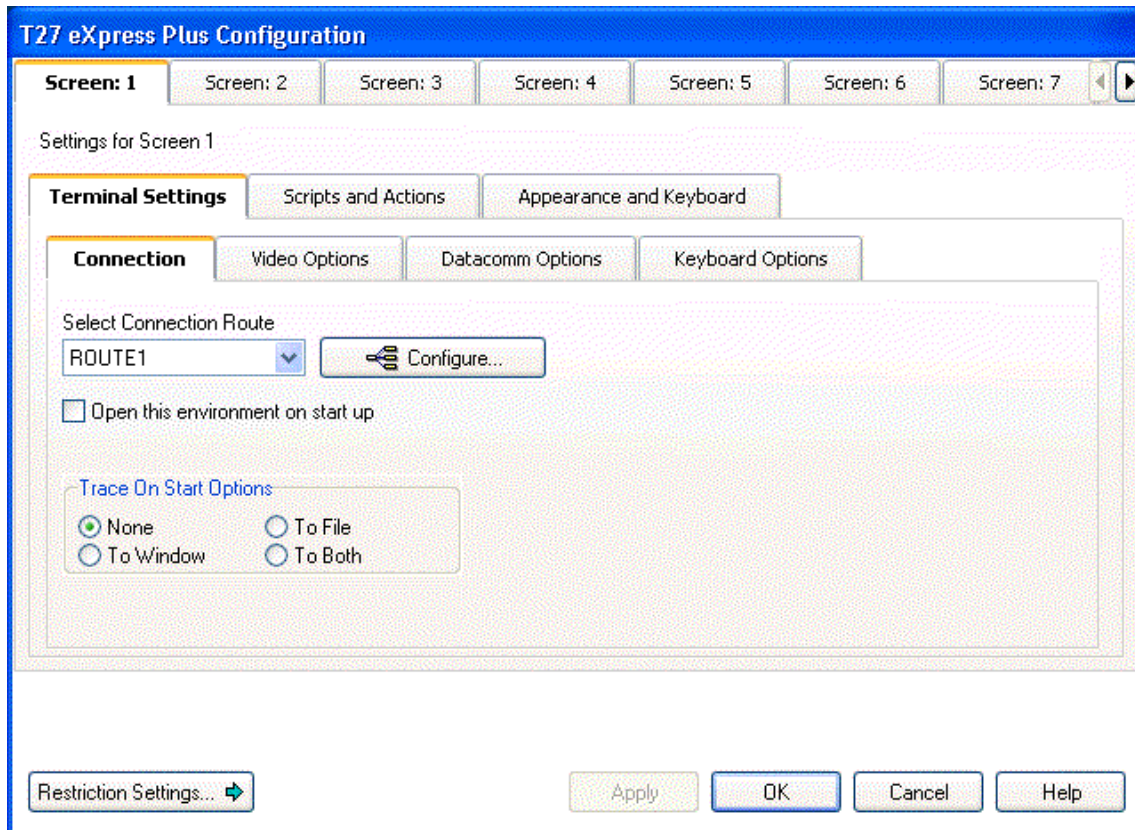
Configuration

T27 eXpress Plus Configuration

The **T27 eXpress Plus Configuration** dialog contains configuration options that assign the communication route to be used when the screen is opened. It is also used to set general T27 options for the screen. Each screen may also have its own tool bar, appearance scheme, keyboard and script menu assigned. In addition, a sign-on script may be assigned to each screen to facilitate connecting to the host.

Environment tabs (Env. 1 – Env. n)

Select the environment tab you wish to configure. The number of environment tabs shown depends on the number set on the **Globals** tab.



Connection tab

This tab contains controls that may be used to assign a configured route to an environment.

Select Connection Route

This drop-down list box contains the names of all configured routes. To assign a route to an environment, select one from this list. Once a route is assigned, its corresponding numbered button will be enabled on the T27 eXpress Plus Control Panel.

Configure

Click this button to configure the routes and virtual destinations required to connect to a host (Note: Each screen in use should have its own configured route). When complete, use the **Connection Route** drop-down list box to link a newly configured route to the selected screen.

Open This Environment on Start

Check this box to automatically connect to the route when T27 eXpress Plus is first started.

Trace on Start Options

The controls in this group determine what trace activity is to take place, if any, when the screen is first opened.

None

When this option is set, no tracing activity will take place.

To Window

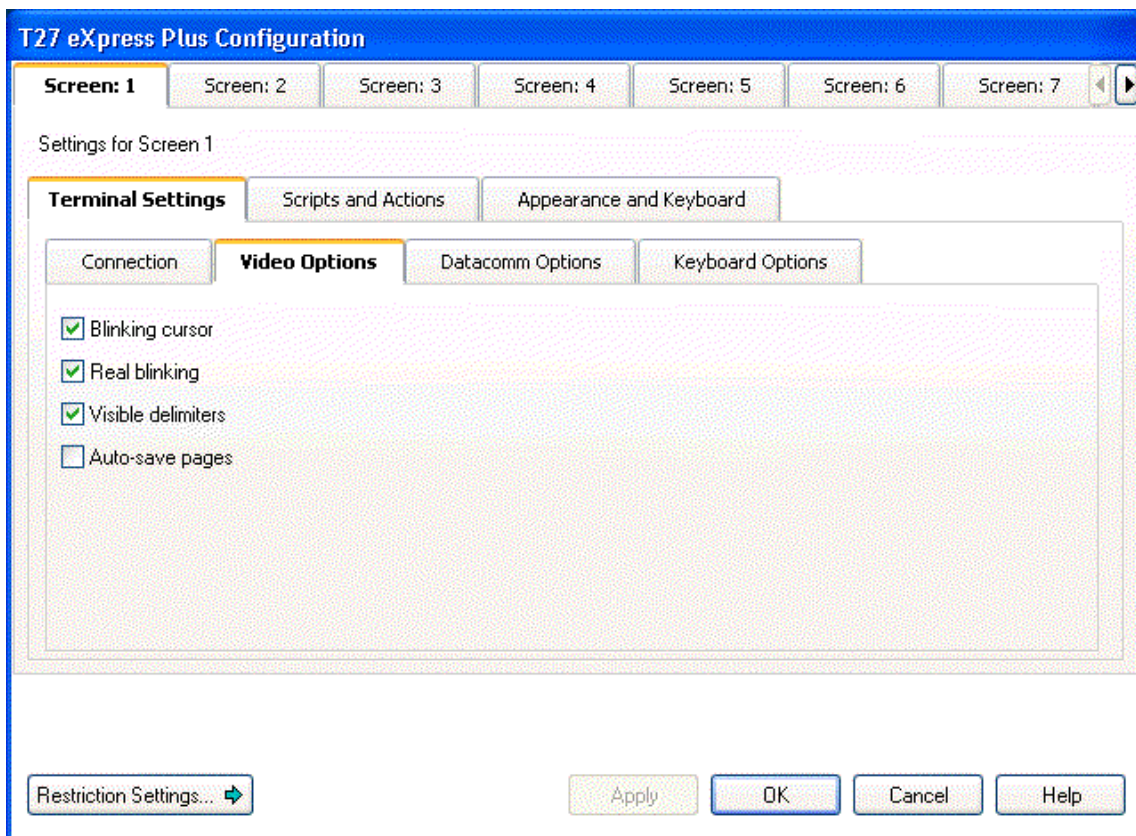
When this option is chosen, a separate trace window will open to display the trace.

To File

This option will cause the **Emulator TraceFile** dialog to open when the screen is opened. In this dialog, enter the text file name for the trace file. The trace file is normally stored in C:\Documents and Settings*username*\Local Settings\Temp directory and will have a .txt extension.

To Both

Select this option to trace to a window and file.

**Video Options tab**

The options on this tab govern the state of the monitor display. Multiple options may be selected.

Blinking Cursor

Checking this box causes the current cursor position to blink. If this box is not checked the cursor remains solid.

Real Blink

Check this box to cause data fields having the blinking attribute to blink on and off.

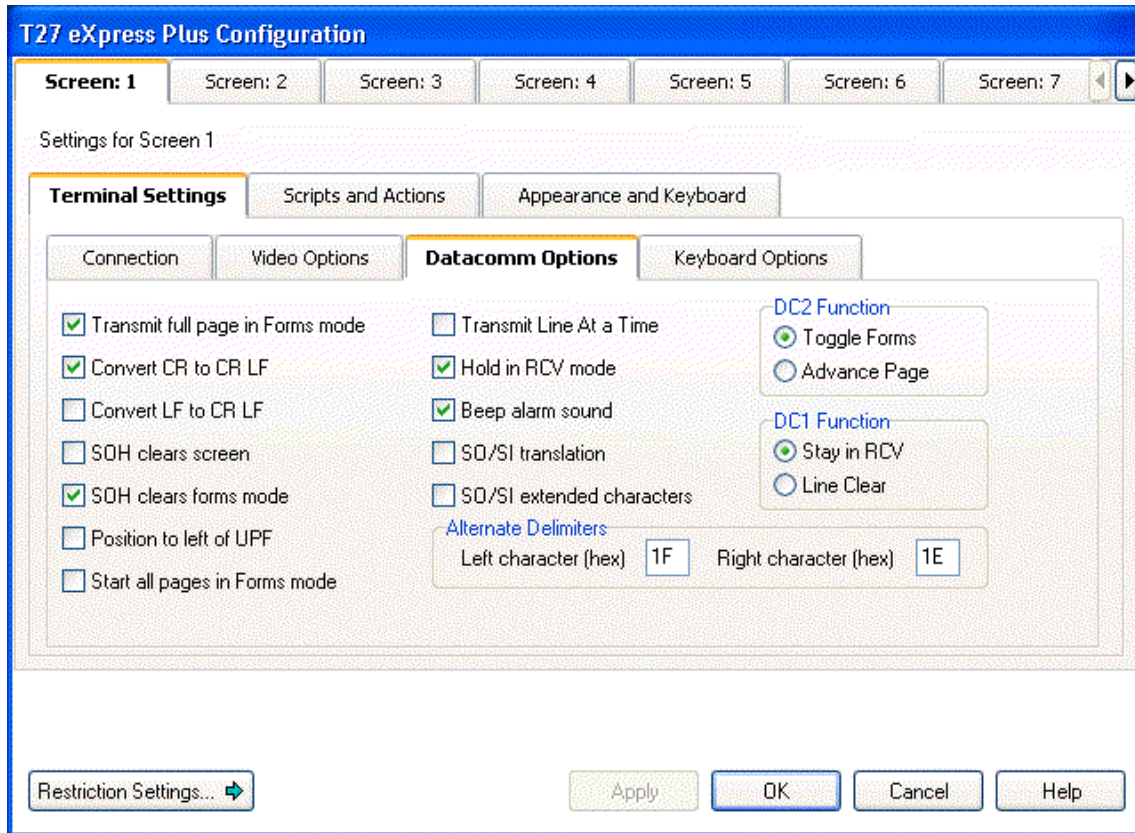
If the **Real Blink** option is not used, blinking text will appear in the colors as configured for the **Blinking** option. The **Blinking** may be set on the eXpress Custom Terminal Screen Appearance dialog.

Visible Delimiters

Check this box to display field delimiters when in forms mode (see **Toggle Forms**, below).

Auto-save Pages

When this box is checked, the contents of all pages in an environment are saved to disk when the environment is closed. The pages are then restored when the environment is re-opened. Note: As a result of this action, page one will be overwritten on start up.



DataComm Options tab

The options on this tab govern communications between the host and PC. Multiple options may be selected.

Transmit Full Page in Forms Mode

Check this box to cause the full page to be transmitted to the host when in forms mode (see **Toggle Forms**, below). If this box is not checked, only the unprotected data from the home position to the cursor will be transmitted.

Convert CR to CRLF

Check this box to cause a line feed character to be appended to any carriage return character sent by the host application.

Convert LF to LFCR

Check this box to cause a carriage return character to be appended to any line feed character sent by the host application.

SOH Clears Screen

Check this box to cause the screen to be cleared upon receipt of an SOH character.

SOH Clears Forms Mode

Check this box to cause forms mode to be terminated upon receipt of an SOH character.

Position to Left of UPF

When this option is checked, the effect of the Home function places the text cursor to the first character position of a right justified, unprotected field; otherwise, the cursor will be moved to the data entry position, or rightmost position of the field.

Start All Pages in Forms Mode

Check this box to set all pages initially to Forms mode. See also, **Transmit Full Page in Forms Mode**, above, and **Toggle Forms**, below.

Transmit Line at a Time

Check this box to force the normal Transmit to act like the Transmit Line key.

Hold in RCV Mode

Check this box to cause the screens to remain in receive mode after getting a message from the host application (see **Stay in RCV**, below).

Beep Alarm Sound

Checking this box turns audible beep on. If this box is not checked, no audible sound will be heard.

SO/SI Translation

Check this box to enable SO/SI (7-bit to 8-bit/8-bit to 7-bit) character translation on data transmitted to the host.

SO/SI Extended Characters

Check this box to enable SO/SI (7-bit-to-8-bit/8-bit-to-7-bit) character translation on data received from the host. This option is not required if the host transmission is prefixed by ESC SO sequences.

DC1 Function

The mutually exclusively options in this group instruct T27 eXpress Plus how to interpret the DC1 character when received from the host.

Stay in RCV

Choose this option to keep the screens in receive mode upon receipt of a DC1 character. This option nullifies the **Hold in RCV** option (see above).

Line Clear

Choose this option to clear the line upon receipt of the DC1 character.

DC2 Function

The option buttons in this group instruct T27 eXpress Plus how to interpret the DC2 character when received from the host.

Toggle Forms

Choose this option to toggle to/from forms mode upon receipt of the DC2 character.

Advance Page

Choose this option to stay in the current mode (forms or no-forms) and advance the DataComm pointer one position to the right upon receipt of the DC2 character.

Alternate Delimiters

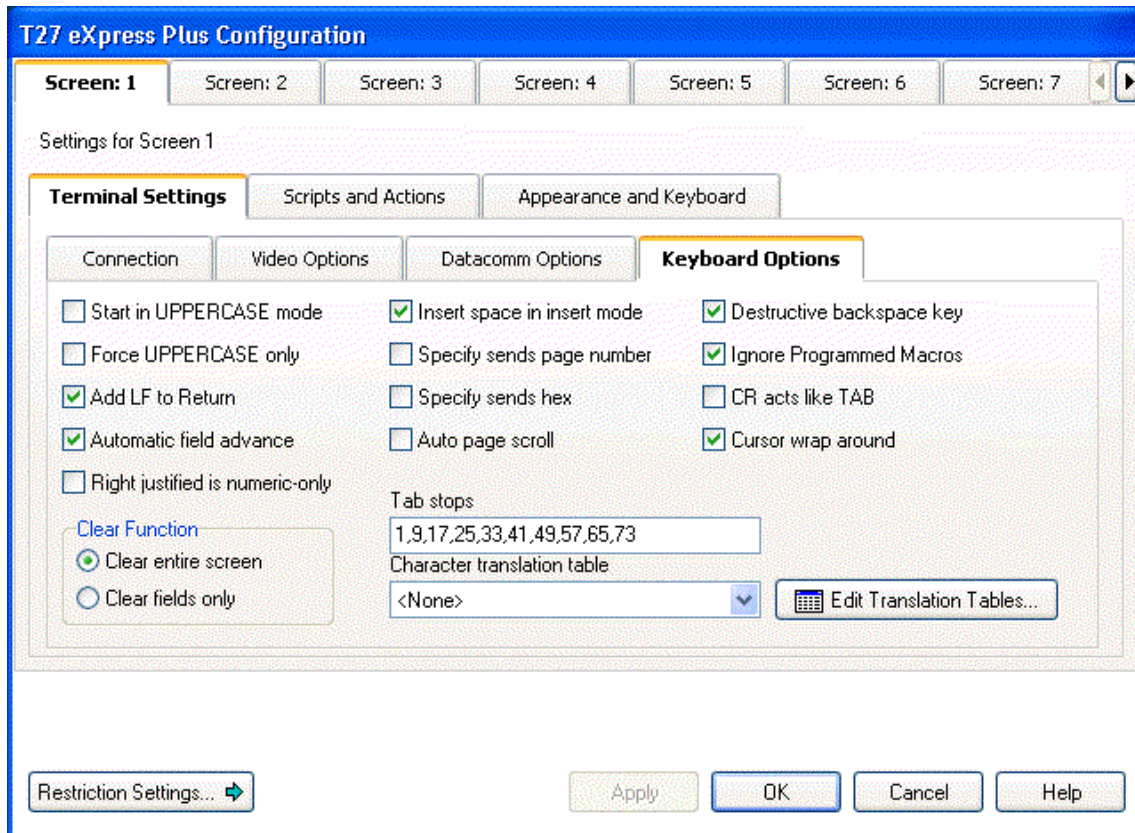
In this group, enter the alternate delimiters sent by the host application. Use of alternate delimiters only applies when in forms mode.

Left Character (hex)

In this text box, enter the hex character sent and interpreted as the beginning delimiter of left-justified unprotected fields. The default is the **US** character (1F).

Right Character (hex)

In this text box, enter the hex character sent and interpreted as the ending field delimiter. The default is the **RS** character (1E).



Keyboard Options tab

The options on this tab govern keyboard actions. Multiple options may be selected.

Start in UPPERCASE Mode

Check this box to convert lowercase characters that are typed to their uppercase equivalents when the environment is first opened. This option may be overridden with the Shift+<alphakey>, Ctrl+U (upper only off) and Shift+Ctrl+U (upper only on).

Force UPPERCASE Only

Check this box to convert lowercase characters that are typed to their uppercase equivalents. This option may not be overridden by keystrokes or the host program.

Add LF to Return

Check this box to cause a line feed character to be appended when the **Carriage Return** key (Enter) is issued. If this box is not checked, only the carriage return is issued.

Automatic Field Advance

Check this box to advance the cursor automatically to the next field when the current field becomes full.

Right Justified is Numeric-Only

If this box is checked, only the characters 0-9, space, period (.) and comma (,) will be allowed in a right-justified field. If the box is not checked, any character will be accepted.

Insert Space in Insert Mode

Check this box to cause a space to be inserted whenever the **Insert** key is struck.

Specify Sends Page Number

Check this box to cause the page number (in addition to the normal column and row designating the cursor position) to be sent to the host application when the Specify key is pressed.

Specify Sends Hex

Check the box to cause the cursor position (column and row) to be sent in hexadecimal when the Specify key is pressed. When this box is not checked, the cursor position is reported in ASCII.

Destructive Backspace Key

Check this box to erase characters as the Backspace key is struck.

Ignore Programmed Macros

When checked, this box will cause the emulator to ignore any host or manually programmed T27 macro keys. Checking this box does not prevent Enable scripts related to action keys from running. The box is checked by default.

CR acts like TAB

Check this box to make the Carriage Return key (Enter ↵) behave like the Tab key.

Tab Stops

In this text box, enter the column positions (separated by commas) of the tab stops. The default is 1,9,17,25,33,41,49,57.

Character Translation Table

From this drop-down list box, select a country that most closely matches your keyboard requirements.

Clear Function

The mutually exclusively option in this group specifies what action occurs when the **Clear** key is pressed.

Clear Entire Screen

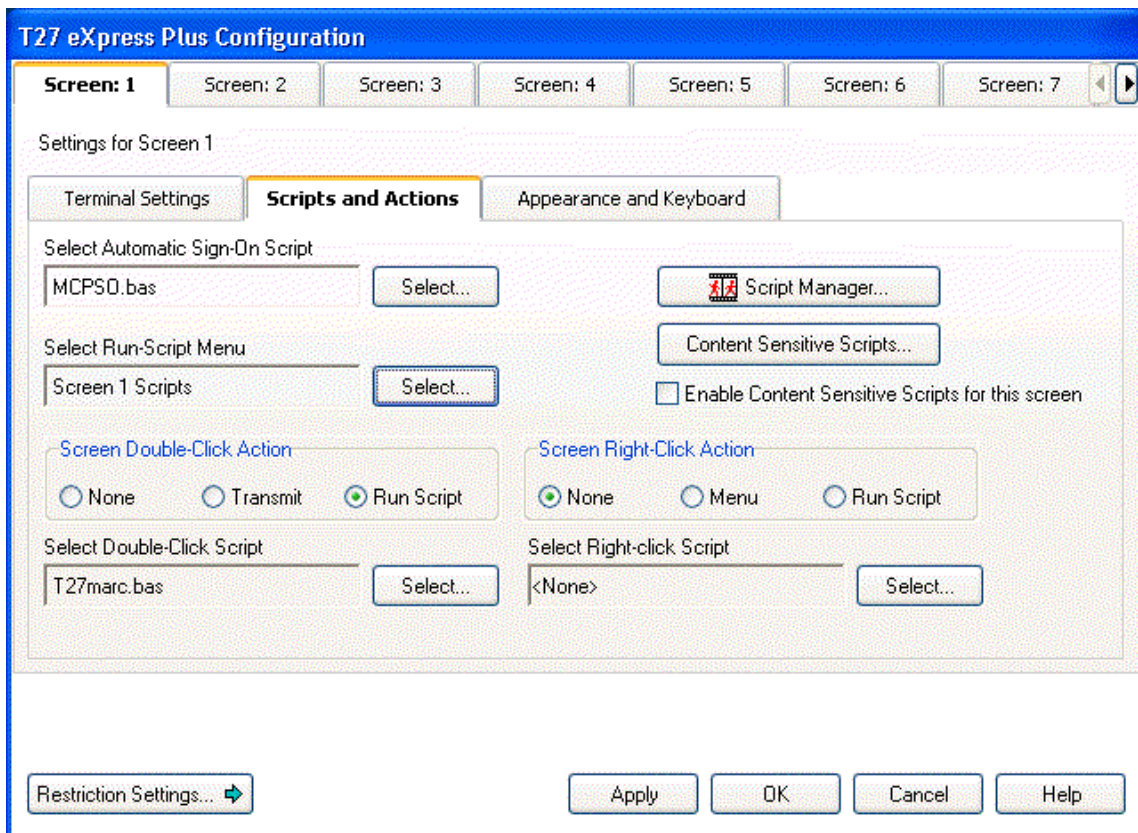
Select this option to clear the entire screen.

Clear Fields Only

Select this option to clear all unprotected fields.

Edit Translation Tables

Click this button to exit the keyboard character translation tables.



Script and Actions tab

The controls on this tab govern the use of scripts, script menus, sign-on scripts and mouse click actions.

Select Automatic Sign-on Script

Use the **Select** button to initiate the **Select Sign-On Script for Screen** window and link a previously developed script to the currently selected screen. The next time the screen is opened, the linked script will be automatically executed. Sign-on scripts can be developed easily using the T27 eXpress Plus Script Recorder found on the **Script** menu of any open screen (see **Start Script Recorder** and **End Script Recorder**).

Select Run-Script Menu

Use the **Select** button to initiate the **Select Screen Script Menu** window and link a previously created script menu to the currently selected screen. Script menus are developed by clicking the **Script Manager** button on this tab.

Script Manager

Use this selection to open the Script Manager dialog. Use the Script Manager to create and maintain scripts and script menus.

Content Sensitive Scripts

Click this button to setup a list of scripts that are to be run depending upon text received from host applications.

Screen Double-Click Action

Select an option button from this group to define the action to be taken when you double click the mouse button on the emulator screen. The **None** option places the text cursor where the mouse cursor was double clicked. **Transmit** places the text cursor where the mouse cursor was double-clicked, but also transmits all information from the cursor position back to the previous SOE. The **Run Script** option will cause the assigned script to be executed upon a double click (see below). If no script is assigned, this option acts like the **None** option. Note: When setting the **Run Script** option, the screen must be closed and reopened for the action to take effect.

Select Double-Click Script

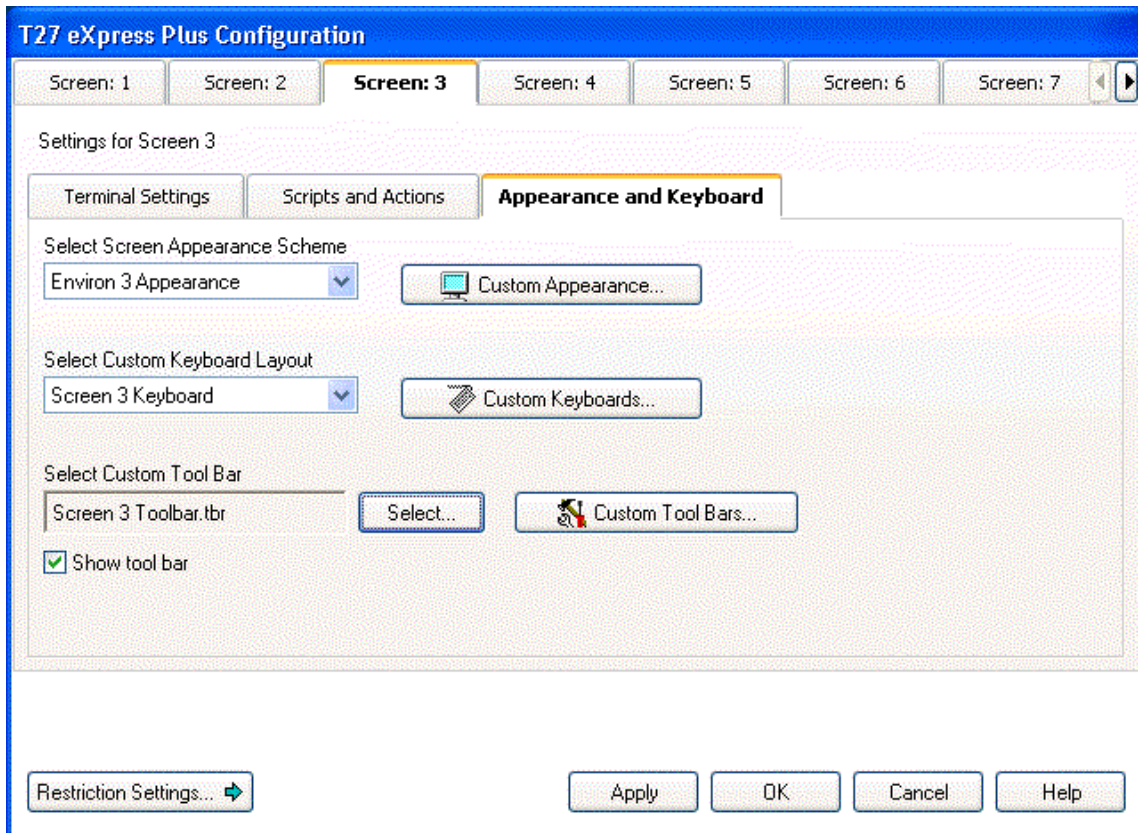
Use the **Select** button to initiate the **Select Double-Click Script for Screen** window and link a previously developed script to a double-click mouse action on this screen. On the **Select Double-Click Script for Screen** window, highlight the desired script with a mouse click or down arrow and press the **Select** button. This script will only be executed if the **Run Script** option button is set in the **Double-Click Action** group (see above).

Screen Right-Click Action

Select an option button from this group to define the action to be taken when you right click the mouse button on the emulator screen. The **None** option disables any right mouse click action. **Menu** (the default) presents a popup menu of common selections. The **Run Script** option will cause the assigned script to be executed upon a right mouse click (see below). If no script is assigned, this option acts like the **None** option. Note: When setting the **Run Script** option, the screen must be closed and reopened for the action to take effect.

Select Right-Click Script

Use the **Select** button to initiate the **Select Right Click Script for Screen** window and link a previously developed script to a right-click mouse action on this screen. On the **Select Right Click Script for Screen** window, highlight the desired script with a mouse click or down arrow and press the **Select** button. This script will only be executed if the **Run Script** option button is set in the **Right Click Action** group (see above).



Appearance and Keyboard tab

The controls on this tab may be used to customize the screen's appearance (color, font, scaling, etc.); configure keys and assign keyboards; and design and assign tool bars.

Select Screen Appearance Scheme

From this list, select a previously configured (see **Custom Appearance**, below) appearance scheme to be applied to this screen. Note: This selection only affects the appearance of the screen portion of the screen window. To alter the appearance of the entire T27 eXpress Plus application, use the **Application Scheme** button at the bottom of the eXpress Plus Configuration window (see below).

Custom Appearance

Click this button to open the Custom Terminal Screen Appearance window and configure an appearance scheme that may be applied to one or more screens.

Select Custom Keyboard Layout

From this list, select a previously configured (see **Custom Keyboards**, below) keyboard layout to be assigned to this screen.

Custom Keyboards

Click this button to open the Custom Keyboard Layouts window and configure a keyboard layout that may be assigned to one or more screens.

Select Custom Tool Bar

Use the **Select** button to initiate the **Select Tool Bar for Screen** window and link a previously developed tool bar to the currently selected screen.

Custom Tool Bars

Click this button to open the Custom Tool Bar Design window and configure tool bars that may be assigned to one or more screens. Buttons may be assigned to any UTS keystroke or previously developed eXpress Plus script.

Show Tool Bar

Check this box to show the tool bar initially when the screen is first opened.

Restriction Settings/Configure Settings

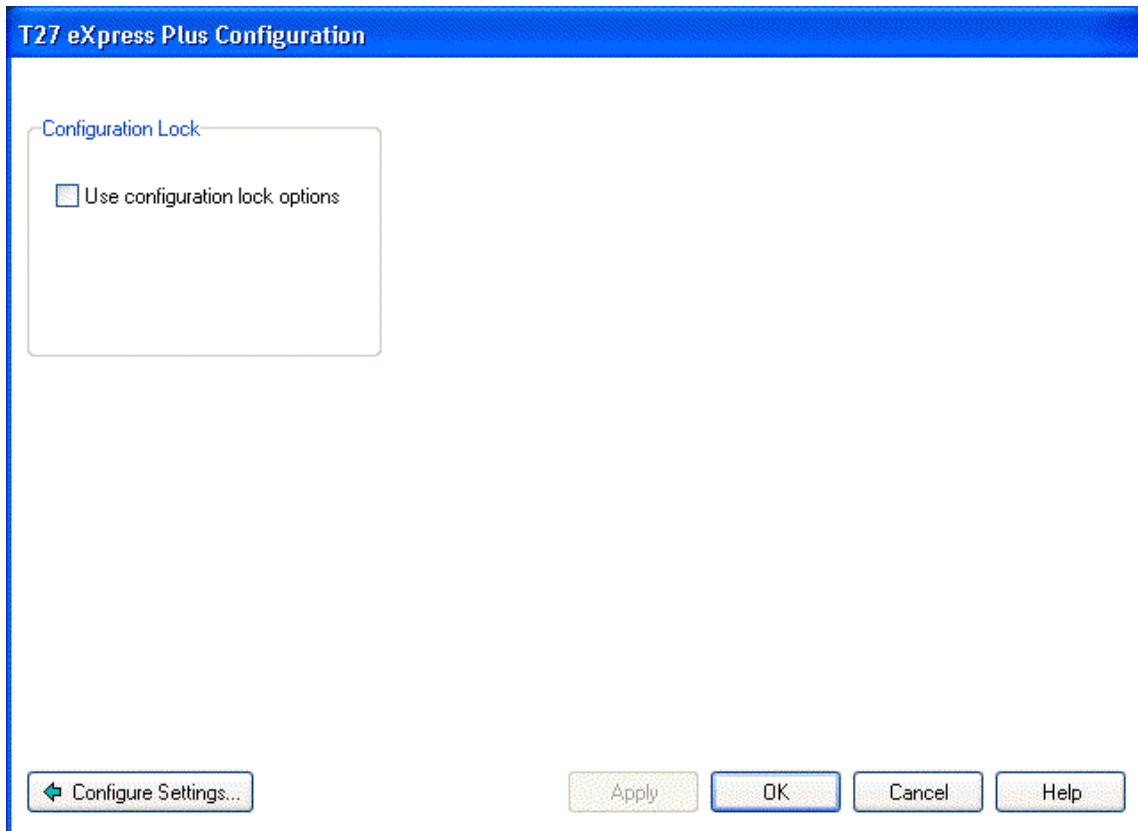
Click this button to toggle to and from the restriction settings dialog.

Restriction Settings dialog

The restriction settings dialog on the **T27 eXpress Plus Configuration** window contains configuration controls that may be used to enforce configuration security by assigning a configuration password.

Note: This dialog is not available if you are running the network version of T27 eXpress Plus, T27 eXpress Net; however, the person responsible for maintaining T27 eXpress Net may grant configuration privileges through the **T27 eXpress Net Administrator** program.

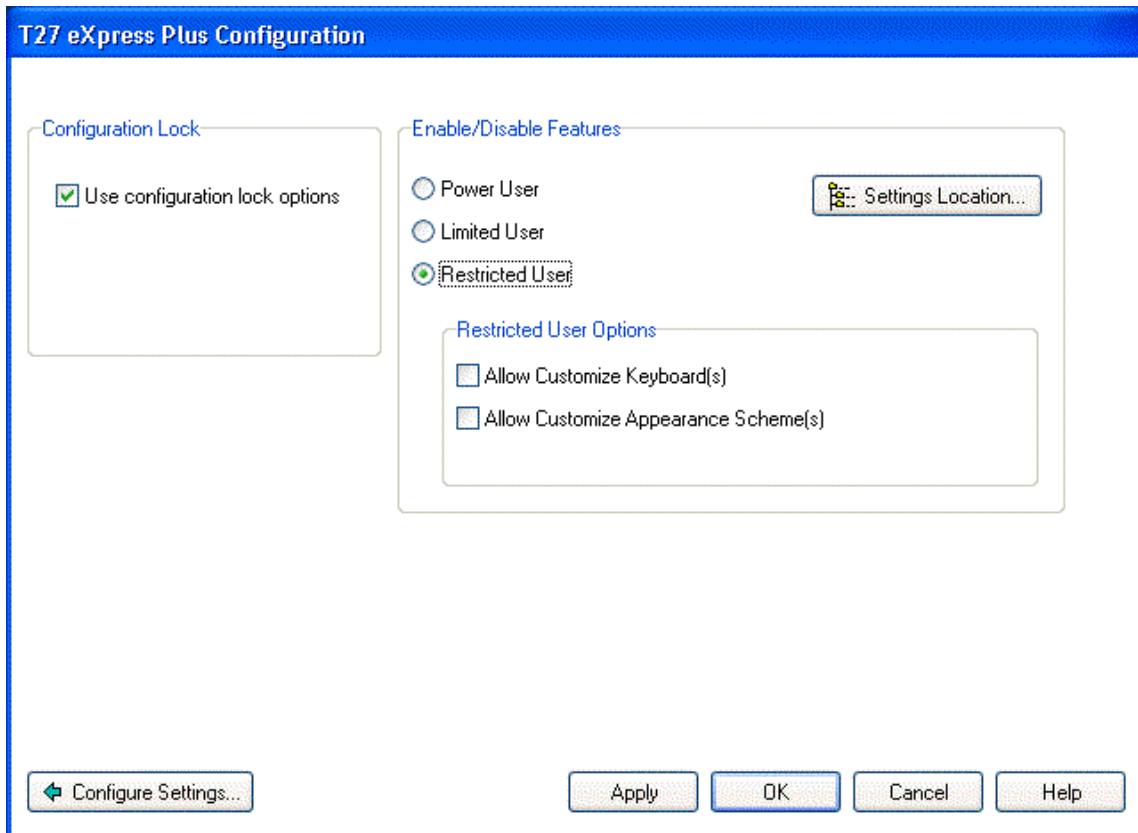
Once the password is assigned, all or selected configuration options may be disabled by checking the appropriate option. Subsequently, to enable an option, you must first unlock the configuration by providing the assigned password.



Use Configuration Lock Options

Check this box to initiate password protection on configuration options. Checking this box will cause the **Lock Config Initial Password** dialog to be displayed. After entering and confirming the new password, additional security features will become visible (see below).

Note: For the configuration lock to take effect, both the configuration and the emulator must be exited and restarted.



With this level of eXpress, users may be restricted to one of three levels: the Power User, the Limited User and the Restricted User.

A Power User may configure all options including connections to the host, thus a Power User has no configuration restrictions. The Power User of the network version (eXpress Net) will execute from a network server (file or web) as a registered user, but all configuring will be performed by the Power User ... not the network administrator.

A Limited User is only limited to configuring non-communications options. The Limited User of eXpress Net will also execute from the server and receive all screen connections from the server (configured by the network administrator); however, the Limited User will be unrestricted in every other way.

A Restricted User may be denied any configuration capabilities or limited to only those involving application/screen appearance and keyboards. The eXpress Net Restricted User will execute from and receive all configuration information from the server. Some parts of their configuration may optionally be overridden by the network administrator.

eXpress User Capabilities at a Glance

User Level	Allowed Capabilities					
	Configure Connections	Terminal Settings	Script Development	Screen Appearance	Customize Keyboards	Application Scheme
Power User	Yes	Yes	Yes	Yes	Yes	Yes
Limited User	No	Yes	Yes	Yes	Yes	Yes
Restricted User	No	No	No	Optional	Optional	Optional

Settings Location

The purpose of this feature is to allow all users of a single machine (Windows system) to use the same configuration settings for the T27 eXpress Plus terminal emulator and/or the eXpress Connect host connections. By default, all emulator settings are saved in files for the current user (C:\Documents and

Settings\<<USER>>\Application Data\KMSystems\T27_EXPRESS_PLUS32_4.0\CONFIGURATION) which allows multiple users on the same machine to have their own individual settings.

In some cases, it may be desirable to have one set of configuration settings used by all users of the machine. One reason for common settings is so that the configuration settings can be done once for all users, instead of for each individual user; however, users should **NOT** be allowed to make configuration changes once they are set. There should only be one allowed to maintain the configuration. If common configuration settings are desired, the emulator settings will be stored in common files (C:\Documents and Settings\All Users\Application Data\KMSystems\T27_EXPRESS_PLUS32_4.0\CONFIGURATION) and removed from current user.

The mechanism for creating common configuration settings in the T27 eXpress Plus terminal emulator is accessed from this dialog of the **T27 eXpress Plus Configuration** window. The eXpress Connect transport settings are accessed from the **Edit** menu in the **eXpress Connect Visual Configuration** window. Both the emulator and eXpress Connect transport settings are made common or by users, independent of one another. For example, eXpress Connect transport settings may be made common, while emulator settings remain by user.

The **Settings Location** feature is only available when **Use configuration lock options** is checked. Again, individual users should **NOT** be allowed to changes settings when the configuration settings are common to all users of the same machine.

Restricted User Options

The following options are only available when configuring restricted users. Power users and limited user have these capabilities by default.

Allow Customized Keyboard(s)

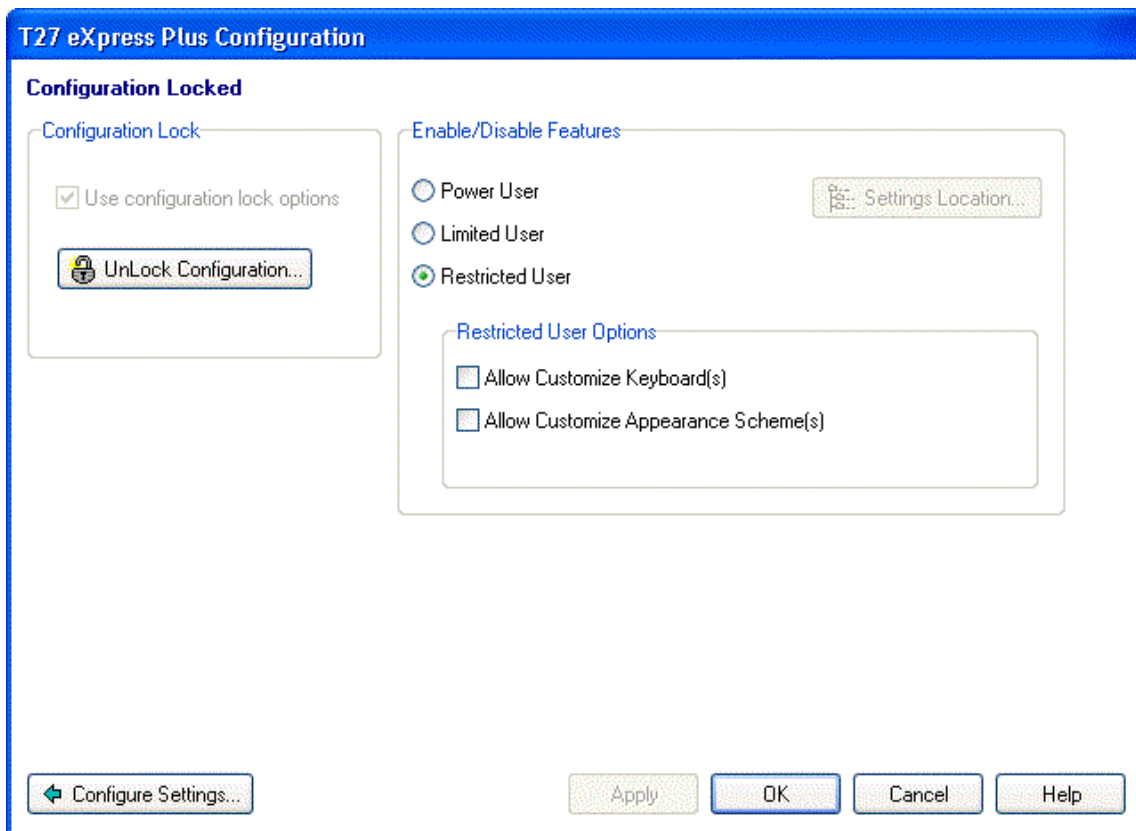
Check this box to allow the restricted use to develop and use personalized keyboards.

Allow Customized Appearance Scheme(s)

Check this box to allow the restricted user to develop and assign appearance schemes to screens.

Allow Customize Application Scheme(s)

Check this box to allow the restricted user to develop and maintain appearance schemes for the eXpress Plus application.



Unlock Configuration

This button may be used to display the **Unlock Config Password** dialog where the proper password may be entered to enable the controls on the restrictions dialog. This button is only visible if the **Use Configuration Lock Options** check box has been set and a password entered.

Apply

Click this button to apply the settings immediately without exiting the configuration window. If you have entered the configuration window from the emulator, you will see any changes take effect in the emulator immediately.

OK

Click this button to accept any changes made in this window and close the window.

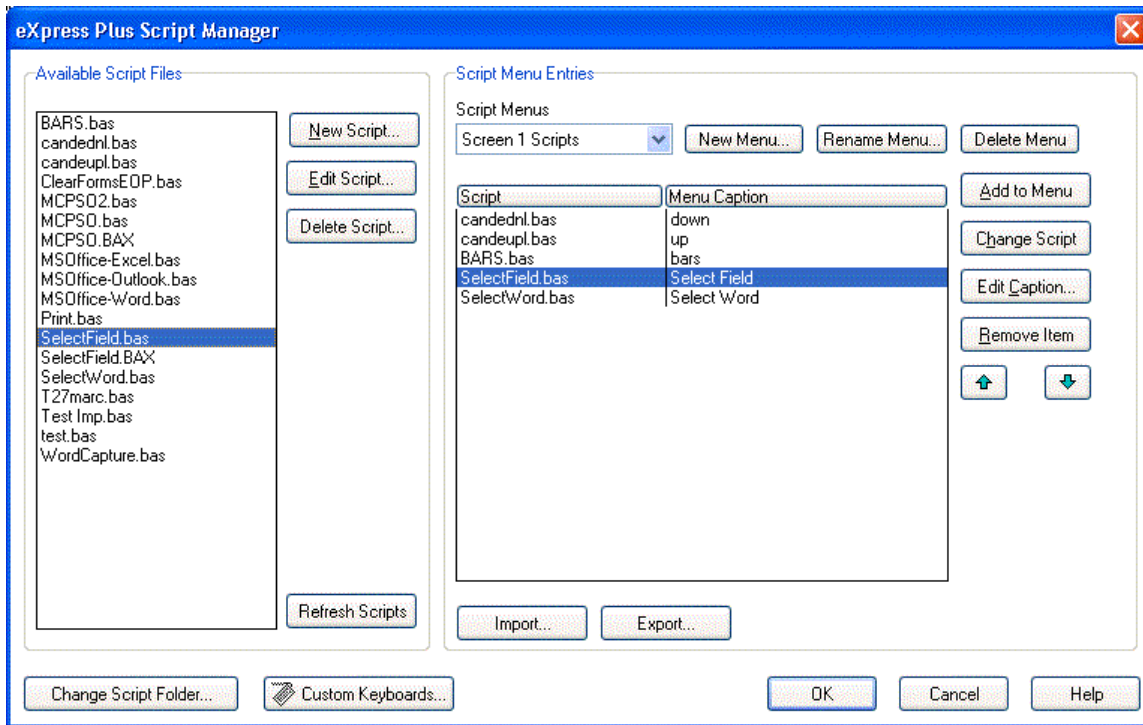
Cancel

Click this button to discard any changes made and close the window.

eXpress Plus Script Manager

This dialog is used to manage T27 eXpress Plus Scripts. You may manually create new scripts, edit scripts that were previously created from scratch or with the **Script Recorder**, or delete obsolete/unwanted scripts.

Also, scripts may be assigned **Action Keys** (keys used to execute the script), placed as selections on the screens' **Scripts** menu.



Available Script Files

This group contains controls that may be used to create and maintain scripts. The list box (initially blank) contains the available script files being maintained in the current directory. To change the current directory and view/edit other scripts, press the **Change Script Filder** button (see below).

New Script

Press this button to initiate the T27 eXpress Plus Script Editor dialog and create a new script from scratch.

Edit Script

Click this button to start the T27 eXpress Plus Script Editor and edit the selected script in the **Available Script Files** list box.

Delete Script

Click this button to delete the selected script in the **Available Script Files** list box.

Script Menu Entries

This group contains controls that may be used to create and maintain menus and menu items linked to T27 eXpress Plus Scripts. The association of the Script Files to the Script Menu Entries is maintained in the Script Control File. If a Script Control File is imported (see **Import**, below) and contains references to Script Files that are not in the current script directory, the script name in the **Script Menu Entry** list box will appear with strikethrough characters through the name. For these scripts to function, the scripts must be moved to the current script directory or the directory changed with the **Script Directory** button.

Script Menus

From the drop-down list box, select a configured menu. The default menu from KMSYS Worldwide contains no scripts but may be altered using scripts from the Available Script Files list (see **Add to Menu**, below).

New Menu

Click this button to create (name) a new menu. Note: Whatever menu is selected from the drop-down list box will be, optionally, the basis of the new scheme.

Rename Menu

Click this button to rename a selected menu.

Delete Menu

Click this button to delete a selected menu.

Add to Menu

After selecting a script from the **Available Script Files** list, press this button to initiate the **Script Menu Caption** dialog and add a text string that comprises the menu selection.

An access key may be designated by placing an ampersand (&) in front of a single character of the text string. Example: "&Sign-On" would appear as "**S**ign-On" on the menu implying the "S" would serve as the access key.

Change Script

Click this button to change the script currently assigned to the selected item in the **Script Menu Entries** list to the script file selected in the **Available Script Files** list.

Edit Caption

Press this button to edit the caption of the selected script in the **Script Menu Entries** list box.

Remove Menu

Click this button to remove the selected menu item in the **Script Menu Entries** list box from the **Scripts** menu.

Move Up (up arrow)

Use this button to move the selected script in the **Script Menu Entries** list box up one entry on the **Script** menu.

Move Down (down arrow)

Use this button to move the selected script in the **Script Menu Entries** list box down one entry on the **Scripts** menu.

Import

Click this button to import an existing script control file.

Export

Click this button to export the current script configuration to a file. In this manner, you may configure a script menu on one PC for distribution to other PCs.

Change Script Folder

Click this button to change the directory where script files (.BAS and .BAX) may be found/stored.

Custom Keyboard

Press this button to initiate the eXpress Custom Keyboard Layouts dialog where activation key(s) may be assigned to scripts.

OK

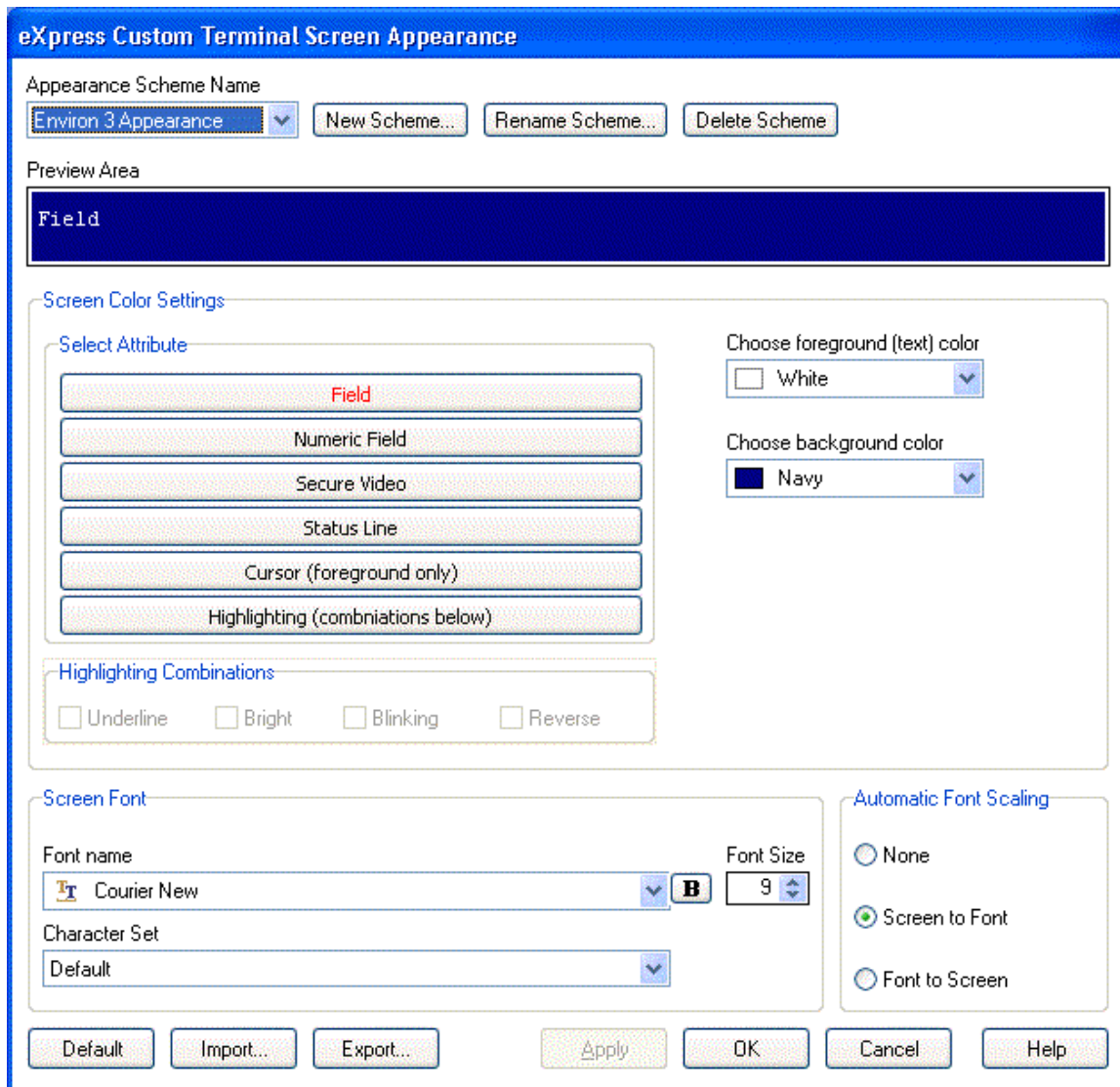
Press this button to accept the entries on this dialog and continue.

Cancel

Press this button to cancel any entries made on this dialog.

eXpress Custom Terminal Screen Appearance

The tab labeled **Fonts and Colors**, on the **T27 eXpress Plus Configuration** contains configuration controls to change screen and printer fonts and to apply colors to specific areas of the display.



Appearance Scheme Name

From this drop-down list box, select the **Color Scheme Name** to be altered. Initially, one color scheme, **Default**, is delivered with T27 eXpress Plus. From the **Default** color scheme, others may be created using the **Save As** button.

New Scheme

Use this button to create a new color scheme based on the T27 eXpress Plus defaults. By this means, each screen can have its own color scheme or screens may share a color scheme. To attach a color scheme to a screen, see T27 eXpress Plus Configuration - General tab.

Note: The scheme named "Default" may be changed but cannot be deleted. When a new scheme is created or an existing scheme **Set to Default** (see below), the default values are acquired from constants internal to T27 eXpress Plus, not from the "Default" scheme mentioned here.

Rename Scheme

Click this button to rename an existing appearance scheme.

Delete Scheme

Click this button to remove the selected color scheme. Caution: Any screen attached to the deleted color scheme will revert to the **Default** color scheme.

Screen Color Settings

The **Screen Color Settings** group contains controls that may be used to change the foreground and background color of various T27 screen attributes.

Select Attribute

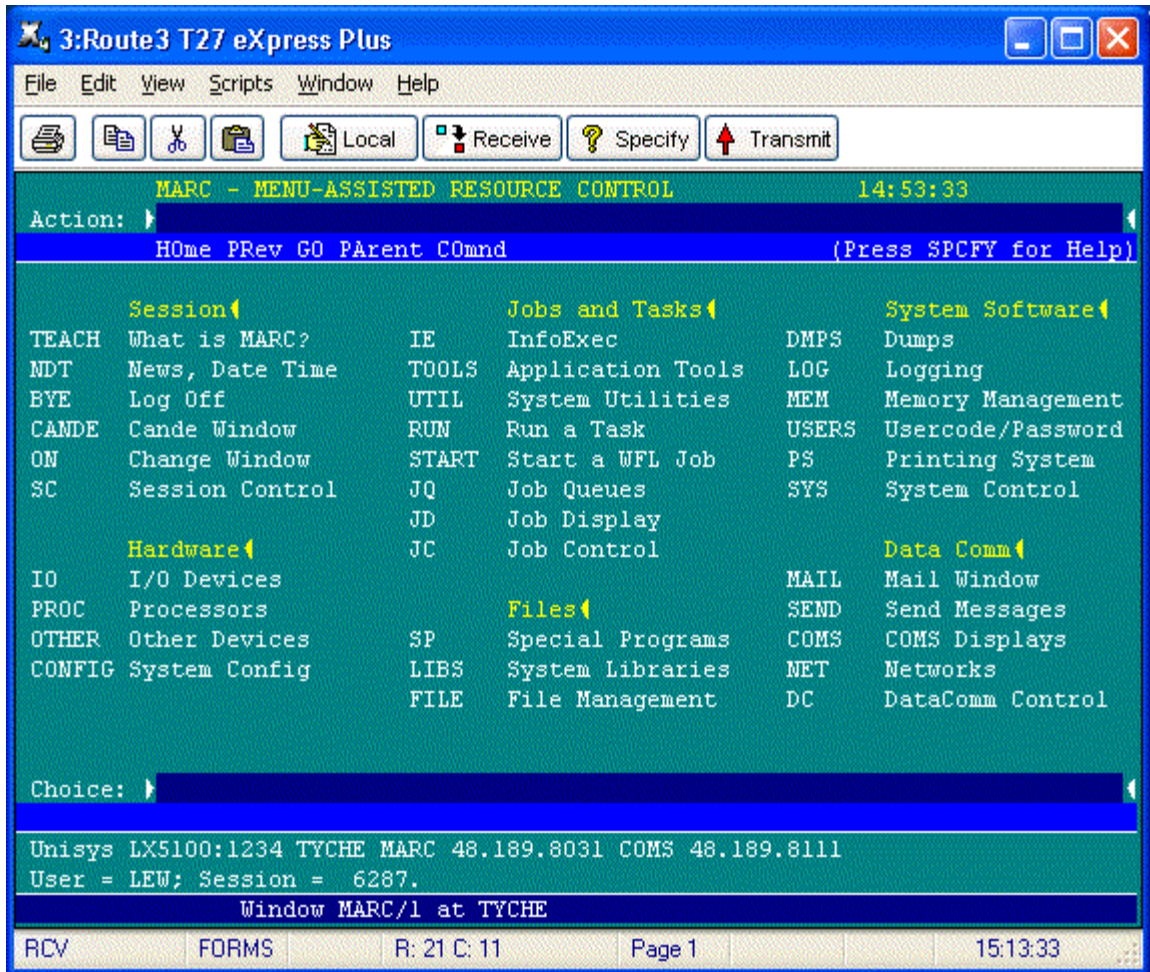
From this group, select an attribute option button whose color is to be changed. When an attribute's colors are changed, those colors will be applied to all areas of the screen having that specific attribute. An attribute's colors consist of a foreground (text) color and a background color.

Note: The **Highlighting** button, used in conjunction with the **Highlighting Combinations** options, offers a possibility of 16 color pairs (foreground/background) when selecting colors for highlighting attributes (Underline, Bright, Blinking and Reverse Video), a combination of those attributes or no attributes.

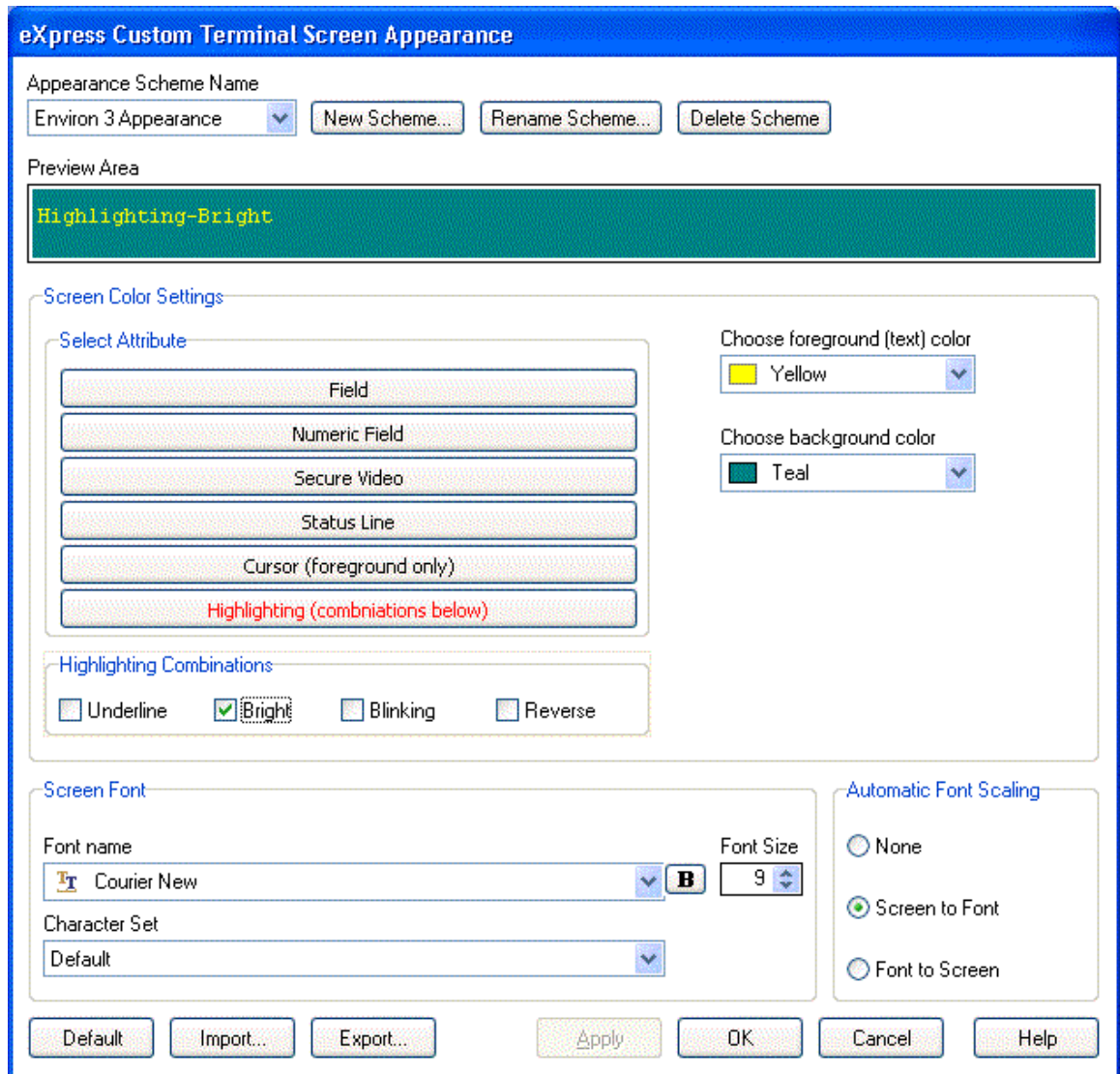
Highlighting Combinations

This group of checkboxes becomes visible only when the **Highlighting** button is selected. Each checkbox represents a highlighting attribute. After selecting an attribute, combination of attributes or no attribute, use the **Choose Foreground (text) Color** and **Choose Background Color** controls to set the colors for that selection.

On the following screen, there are three examples of highlighting: Highlighting-None (white on teal), Highlighting-Underline (white on blue) and Highlighting-Bright (yellow on teal).



Configuration for Highlighting-Bright:



Choose Foreground (text) Color

To change the text color of an attribute, first select the attribute from the **Select Color for Attribute** option group. Next, select a color from this drop-down list box. If you do not wish to use one of the standard Windows colors, select **Custom** at the bottom of the list and configure the desired color with the standard Windows **Color** dialog.

Choose Background Color

To change the background color of an attribute, first select the attribute from the **Select Color for Attribute** option group. Next, select a color from this drop-down list box. If you do not wish to use one of the standard Windows colors, select **Custom** at the bottom of the list and configure the desired color with the standard Windows **Color** dialog.

Screen Font

Use the controls in this group to change the screen font, intensity, size and character set.

Font Name

From this drop-down list box, choose the desired font.

Bold

Click this button toggle to increase or decrease the intensity of the selected font.

Font Size

Use this spin box to increase or decrease the size of the selected font.

Character Set

Use this drop-down list box to change the character set.

Auto Scaling Mode

These three options control how the emulator will behave when you size a station window or change the screen font.

None

When the **None** option is set, no screen or font scaling will be performed when the screen window is resized.

Screen to Font

The **Screen to Font** option causes the screen window size to be changed automatically when the screen font size is changed. Consequently, the station window size may be changed without altering the size of the font. If the size of the window is made larger than that necessary to accommodate the screen size, a blank area will show the physical limits of the screen. If the window size is reduced below the physical screen size, scroll bars appear allowing access to those parts of the screen not currently visible.

Font to Screen

The **Font to Screen** option causes the font size to change automatically whenever the window size of the station is altered. For example: If a window is enlarged or made smaller, the font will increase or decrease in size, accordingly. The **Font to Screen** option will only work when using a scalable font (e.g., Courier New, Lucida Sans Typewriter, etc.). To select a scalable font, click on the **Screen Font** button.

Default

Use this button to change the selected color scheme to the UTS eXpress Plus defaults.

Import

Click this button to import an existing appearance settings file.

Export

Click this button to export the appearance settings to a file.

Apply

Apply the settings immediately without exiting the configuration window. If you have entered the configuration window from the emulator, you will see any changes take effect in the emulator immediately.

OK

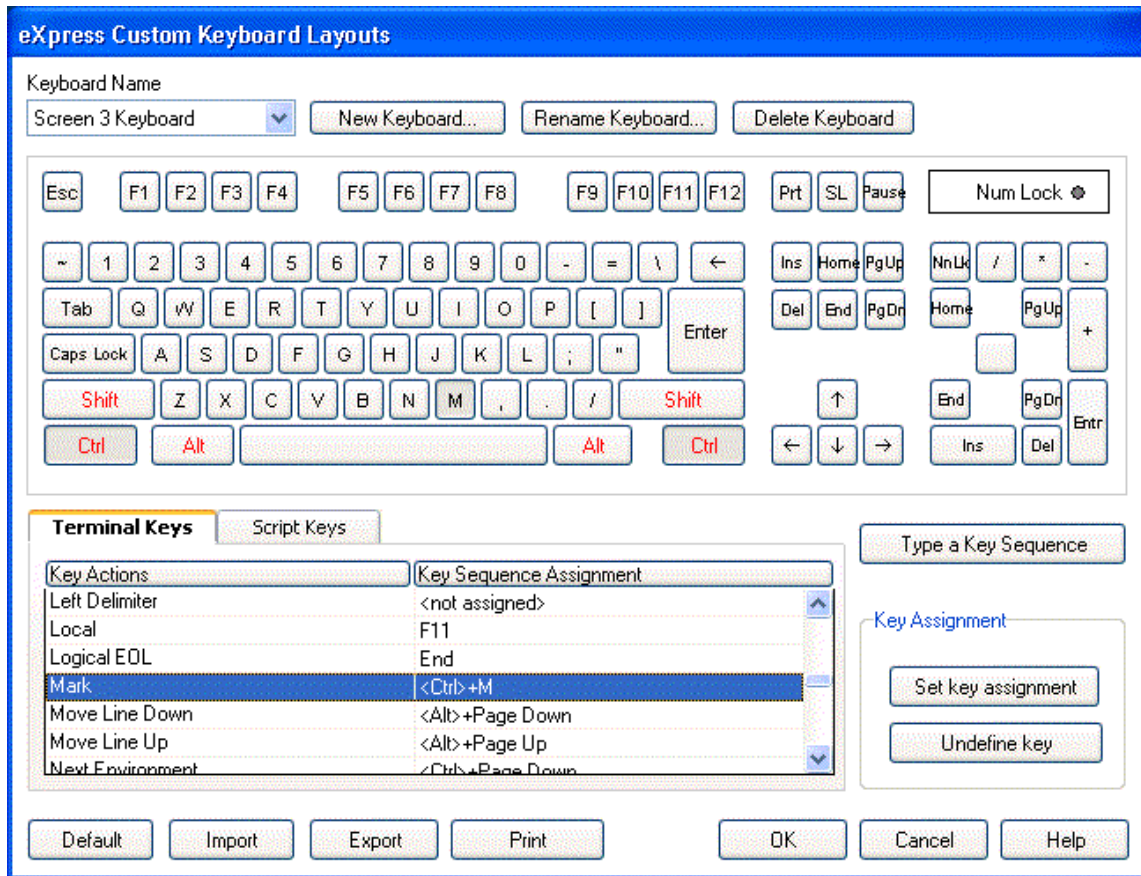
Click this button to accept any changes made in this window and close the window.

Cancel

Click this button to discard any changes made and close the window.

eXpress Custom Keyboard Layouts

This window is used to define which Windows keyboard key or key combination will be used to initiate a T27 terminal or T27 eXpress Plus emulation specific action. Use this window to customize the keyboard to meet your specific needs.



New Keyboard

Click this button to name a new keyboard layout.

Rename Keyboard

Click this button to rename an existing keyboard layout.

Delete Keyboard

Click this button to delete the selected keyboard layout.

Graphic Keyboard

The graphic keyboard display illustrates the configured key or key combinations associated with a terminal key. Note: The location and arrangement of the keys on the graphic keyboard may not match the exact layout of your keyboard; however, most keys on your keyboard should have its corresponding key represented on the graphic keyboard. After selecting a key name from the **Key Actions and Key Sequence Assignment** list, the configured key or key combinations will appear as if they have been pressed. You may change (redefine) or add additional key combinations by pressing the key(s) on the graphic keyboard with a left mouse click. Valid key combinations are any single key plus one or more of the optional, **Shift**, **Alt** and **Ctrl** keys. When the desired key combinations have been selected, press the **Set Assignment** button to assign the key.

Note: Pressing the **Num Lock** key on the *actual* keyboard will cause the **Num Lock** display on the graphic keyboard to toggle (ON/OFF) and the captions on the faces of the numeric keypad keys to change accordingly.

The extended keys (see below) are not mapped to any key in the **Key Actions** list for the default keyboard layout file. They may however be mapped by the user to any key in the **Key Actions** list. If they are *not* mapped, their behavior will be the same as their counterparts on the numeric keypad and main keyboard.

For enhanced 101- and 102-key keyboards, extended keys are the **Ins**, **Del**, **Home**, **End**, **Page Up**, **Page Down** and arrow keys in the clusters to the left of the numeric keypad; and the divide (/) and **Enter** keys in the numeric keypad. The location and arrangement of extended keys may vary from one keyboard to another and may not match the graphic keyboard display.

Key Actions

This list box contains the names of all keys used to control T27 terminal activities or activities specific to a developed application. These keys can be mapped to keys pressed on the graphic keyboard or via the **Type a Key Sequence** button.

Type a Key Sequence

If this button is clicked, a **Type a Key Sequence** window will pop up. In this window, you may type the key sequence you desire to map to the currently selected name in the **Key Action** list. On your acceptance of the typed key sequence, the key will automatically be mapped.

Set Key Assignment

This button sets the mapping of the currently selected **Key Actions** to the selected graphic keyboard keys.

Undefine Key

This button is used to remove the mapping of the key. You may remove a mapped key by first selecting the key in the **Key Actions** list followed by a click of this button.

Default

This button loads the default keyboard layout as distributed by KMSYS Worldwide, Inc.

Import

Use this button to import an existing keyboard definition file (.KEY).

Export

Use this button to save the current keyboard layout to a file.

Print

Click this button to print a list of all key actions and key action assignments. Note: The list will include any key sequences assigned to scripts.

OK

Clicking the **OK** button saves all changes made in this window and closes the window.

Cancel

Clicking the **Cancel** button closes this window and discards all changes made since it was last opened.

How to Map or Re-Map a Key Action

The following describes the procedure for re-mapping T27 terminal or T27 eXpress Plus keys:

1. Select the key to be re-mapped from the **Key Actions** list box.
2. There are two methods of defining which key or key combination to map to the selected name in the Terminal Keyboard Key Names list:
 - a. Click the **Type Key Sequence** button, then type the desired key sequence directly on your keyboard. When you accept the key sequence, the key mapping will automatically be set.
 - b. Select the desired key from the graphic keyboard using a left mouse click over the face of the key. Next, select the desired **Shift**, **Alt** and **Ctrl** keys, if any, by clicking them with the mouse. Finally, to set the keys selected, click the **Set Key Assignment** button.

These steps may be repeated until all desired key mappings are completed.

Conflicts

If a selected key sequence is already mapped to another key, a message box will appear naming the mapped Key Action. You may then re-map or "undefine" the Key Action in conflict or choose a different key sequence.

If you map a Key Action that already has a key sequence assigned to it, a window will appear allowing you to **Add** an alternate key sequence, **Redefine** (replace) the existing key sequence with the new key sequence or **Cancel** the key assignment operation altogether.

Add or Redefine Key

The **Add or Redefine Key** window appears when a conflict is discovered while attempting to assign a keystroke or keystroke combination to a keyboard function.

Help

Click this button to receive on help for this window.

Add

Click this button to add an alternate key sequence. This choice is useful when you want more than one keyboard key to perform the same function (e.g., the two **Enter** keys).

Redefine

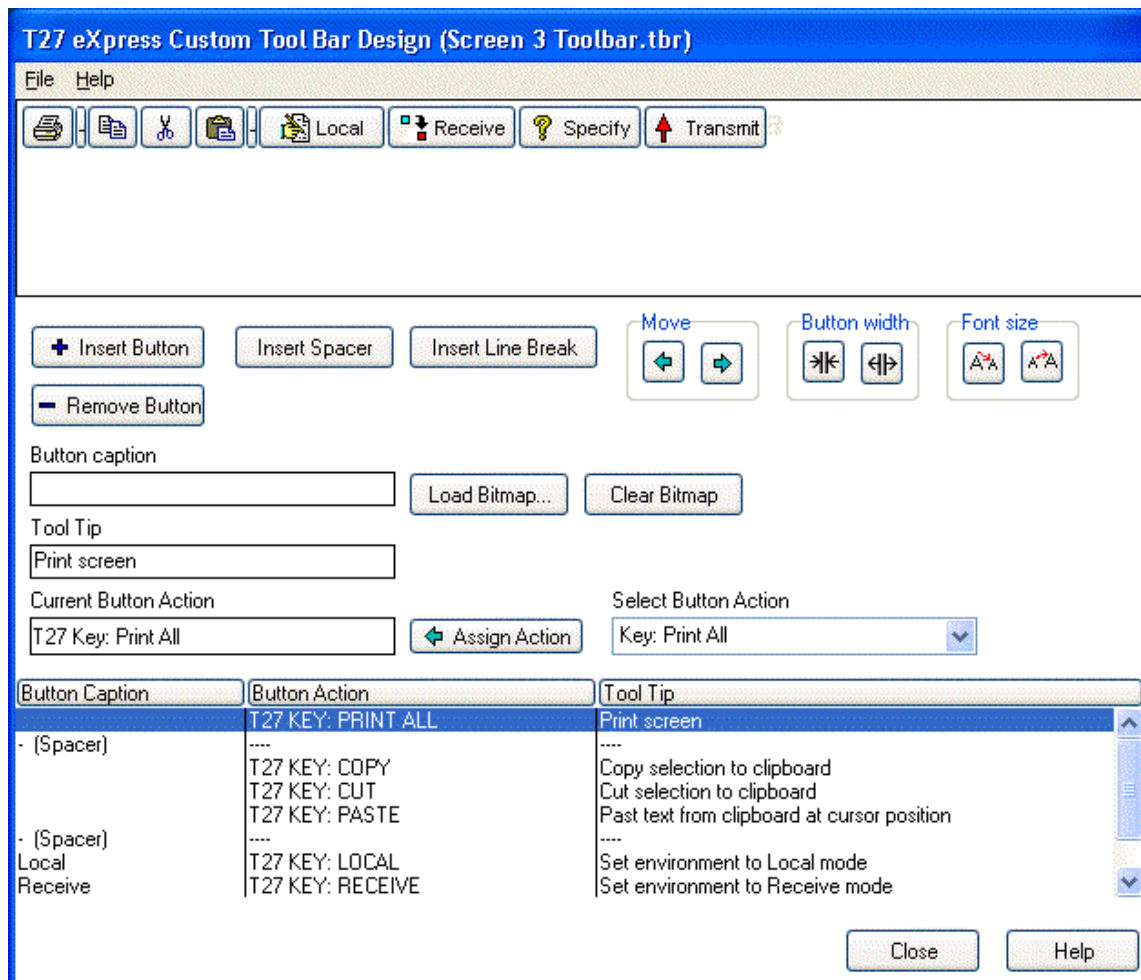
Redefine or replace the existing key sequence.

Cancel

Clicking the **Cancel** button closes this window without assigning the key.

T27 eXpress Custom Toolbar Design

The **T27 eXpress Custom Toolbar Design** window provides the means to design and maintain customized toolbars for screens. Toolbars may contain buttons for any T27 Key or previously developed T27 eXpress Plus Script.

**File menu****New**

Select this item to initiate a new toolbar.

Open

Select this item to open an existing toolbar file (.TBR).

Open Default Toolbar

Select this item to open the default toolbar as supplied by KMSYS Worldwide, Inc. Note: This toolbar may not be altered but may be used as the basis of user-defined toolbars (see **Save As**, below).

Save

Select this item to save changes to the current toolbar file. This item is only enabled after a change has been made.

Save As

Select this item to save changes made to the current toolbar to a different file.

Change Toolbar Directory

Select this item to open the standard Select Directory dialog. This selection allows you to change the toolbar directory from the default installation directory to any desirable location.

Close

Select this item to close the **T27 eXpress Custom Toolbar Design** window. If changes have been made, a conformation message box will appear allowing you to save or discard any changes.

Recently Accessed Toolbar Files

Select any item from this list of the four most recently accessed toolbar files (.TBR).

Tool Bar Button Display Area

The area at the top of this window contains a visual representation of how the tool bar will appear when assigned to and displayed on an emulator screen. You may select an existing button from either the visual display or the list box at the bottom of the window.

Insert Button

Click this button to insert a new button on the tool bar. Note: The new button will appear immediately before the button selected on the visual button bar display (or the list box).

Remove Button

Click this button to remove the selected button from the toolbar.

Insert Spacer

Click this button to insert a spacer to the left of the currently selected button. Note: The spacer may be sized by first selecting the spacer on the tool bar and then using the Button Width buttons.

Insert Line Break

Click this button to place a line break before the currently selected button.

Move

Use these buttons to move the selected button to the right or left along the toolbar. If the toolbar consists of more than one row, a selected button on the first row, moved repeatedly to the right, will eventually end up on the second. The reverse is true when moving a button on a lower repeatedly to the left; i.e., the button will at some point move to the row above.

Ctrl+LeftArrow

Click this button to move the selected button one-button position to the left.

Ctrl+RightArrow

Click this button to move the selected button one-button position to the right.

Button Width

Use these buttons to decrease or increase the width of the selected button.

Shift+LeftArrow

Click this button to increase the width of the selected button.

Shift+RightArrow

Click this button to decrease the width of the selected button.

Font Size

Use these buttons to decrease or increase the font size of button face captions. Changing the button face font size is global to all buttons on the toolbar.

Shift+DownArrow

Click this button to decrease the font size.

Shift+UpArrow

Click this button to increase the font size.

Button Caption

This text box contains the caption that will appear on the button face. If the button caption is larger than can be accommodated by the initial button size, use the **Button Width** buttons to increase (or decrease) the button's width.

If the caption is a single dash (-), the button will not be visible, but will be used as a "spacing tool" to separate button groups. To increase or decrease the space between buttons, select a spacing tool button from the configured buttons list box at the bottom of the dialog and press the **Button Width** buttons.

If the caption is a single equal sign (=), the button will not be visible and will be used as a "row separator" to advance the toolbar to the next row.

Load Bitmap

Click this button to select a bitmap file (.BMP) to be used on the selected button face. If a **Button Caption** is supplied in addition to the bitmap, the caption will appear to the right of the bitmap.

Clear Bitmap

Click this button to remove the bitmap from the selected button.

Tool Tip

This optional text box may be used to provide a tool tip for the button. The text of the tool tip will be displayed in a pop-up box when the mouse cursor is moved over the toolbar button during emulation.

Current Button Action

This information box shows what action (T27 Key or T27 eXpress Plus Script) will be taken when the button is pressed during emulation.

Assign Action

Click this button to assign the selected action to the button. To assign an action, first select the desired button from the visual button bar display (or the list box) at the bottom of the dialog. By selecting the button, the button's caption, optional tool tip and existing action will be displayed in the boxes at the top of the dialog. Finally, select an action from the **Select Button Action** drop-down list box and click the **Assign Action** button.

Select Button Action

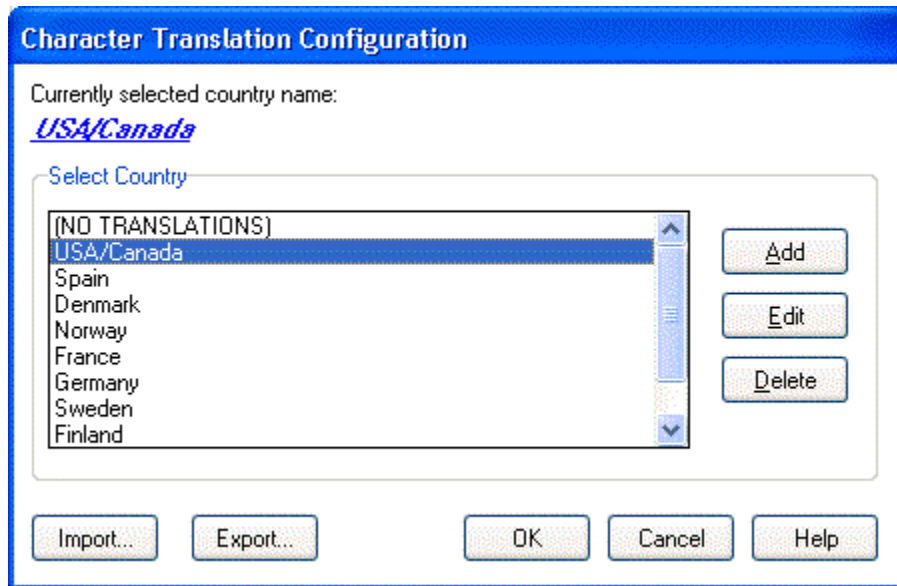
This drop-down list box contains all T27 Keys and previously developed T27 eXpress Plus Scripts that may be assigned to a button and executed when the button is pressed during emulation.

Close

Use this button to close the **T27 eXpress Custom Toolbar Design** window. If changes have been made, a conformation message box will appear allowing you to save or discard any changes.

Character Translation Configuration

The **Character Translation Configuration** window provides the ability to select and edit character translation sets for specific countries.



Select the translation set (the default is NO TRANSLATION) for your locality.

To add a translation set, click the **Add** button. A second window will appear where you may enter a country name that will correspond to the translation set.

To change one or more characters in a translation set, highlight a country name using the left mouse button or the up/down arrow keys and click the Edit button.

To delete a translation set, highlight a country name using the left mouse button or the up/down arrow keys and click the **Delete** button.

Import

Use this button to import an existing character translation file (.ini).

Export

Use this button to save the current character translation configuration to a file.

OK

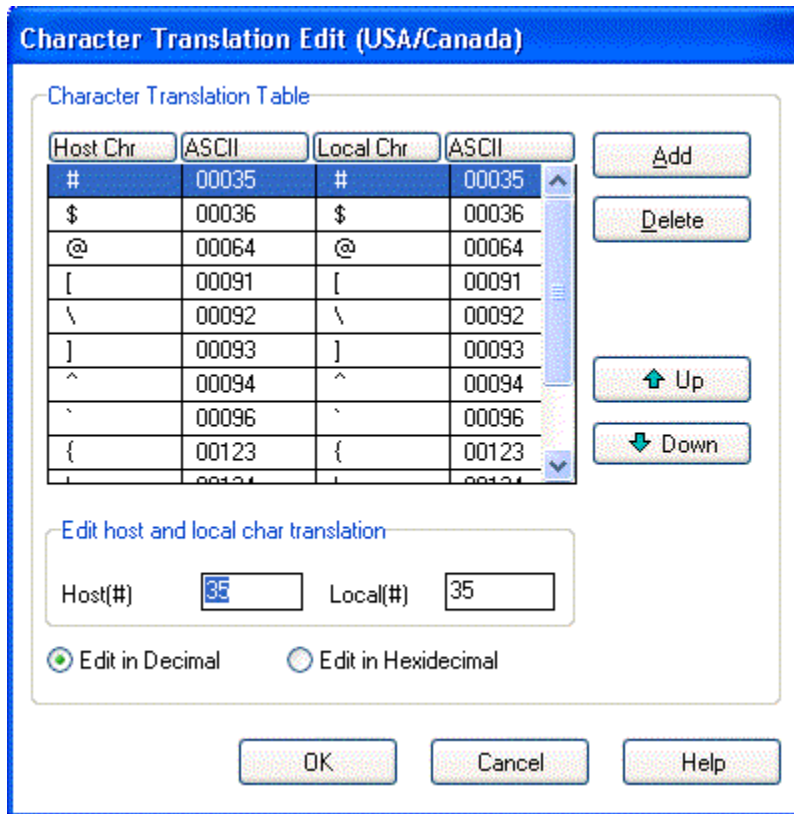
Clicking the **OK** button saves all changes made in this window and closes the window.

Cancel

Clicking the **Cancel** button closes this window and discards all changes made since it was last opened.

Character Translation Edit

This window allows you to specify host character and local character pairs for translation on all data received from, or sent to, the host during a **T27 eXpress Plus session**. All characters are specified in ASCII numeric notation.



Select an existing character in the translation table using the scroll bar, mouse and/or up/down arrow keys. Type any changes into the two text boxes (Host and Local) at the bottom of the window.

To add a new character, select each of the two text boxes (Host and Local) at the bottom of the window, enter the new values and click the **Add** button.

To delete an existing character, select a character in the translation table using the scroll bar, mouse and/or up/down arrow keys and click the Delete button.

OK

Clicking the **OK** button saves all changes made in this window and closes the window.

Cancel

Clicking the **Cancel** button closes this window and discards all changes made since it was last opened.

Lock Config. Initial Password

This dialog is used to supply an initial password that will be required to access the controls for configuration.

New Password

Enter a 1-8-character password. All keyboard characters are allowed.

Reenter New Password to Confirm

Reenter the same password in order to confirm the entry. This entry is required when the **New Password** entry is specified.

OK

Press this button to accept the entries on this dialog and continue.

Cancel

Press this button to cancel any entries made on this dialog.

Unlock Config. Password

This dialog is used to supply the password that will enable configuration controls. The dialog may also be used to change an existing password.

Enter Password

Enter the password required to unlock (enable) configuration controls.

New Password

To change the password, enter the new password in this box. This entry is optional.

Reenter New Password to Confirm

Reenter the same password in order to confirm the entry. This entry is required when the **New Password** entry is specified.

OK

Press this button to accept the entries on this dialog and continue.

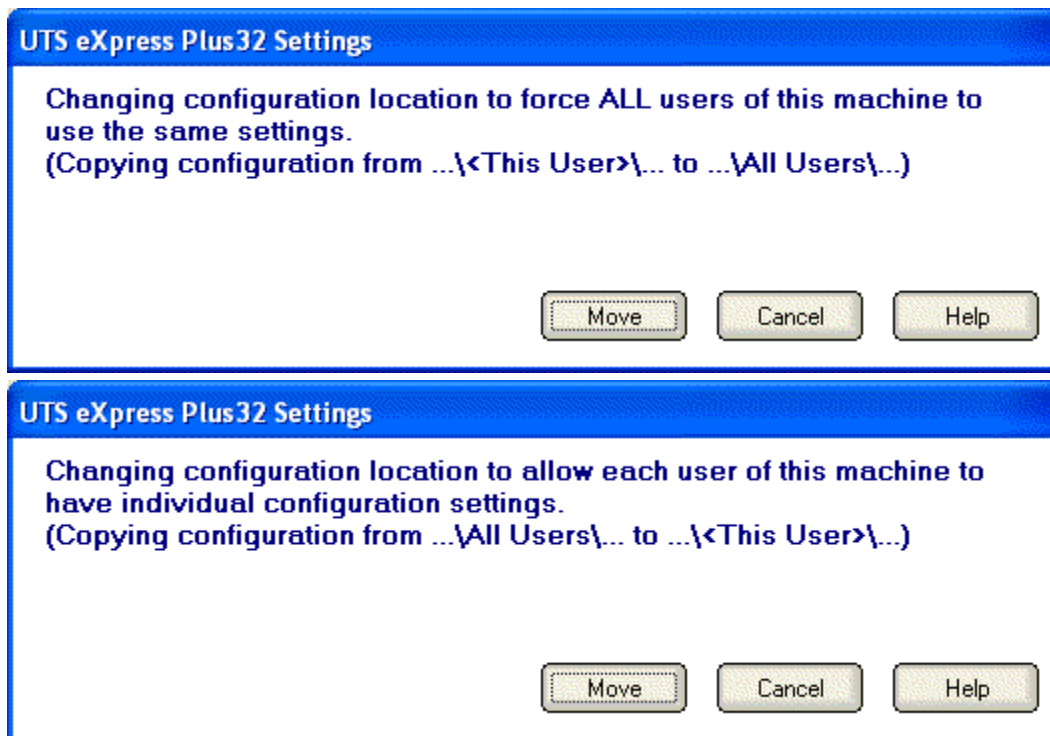
Cancel

Press this button to cancel any entries made on this dialog.

T27 eXpress Plus Settings

This dialog is used to switch the location of the T27 eXpress Plus configuration settings. The settings may be stored in such a manner as to allow multiple users of a single Windows system to maintain their individual configurations. When individual configurations are to be maintained (the default), the settings are placed under C:\Documents and Settings\<<This User>\Application Data. On the other hand, if it is desirable for all users of the system to use the same configuration, an option is available to move those settings to the common location, C:\Documents and Settings\All Users\Application Data.

Note: "<This User>" will be the user-id used to log on to Windows.



The dialog acts as a toggle between <This User> and All Users; i.e., if your settings are currently stored in <This User>, the message will indicate that they be moved to All Users; if they are in All Users, the move would be to <This User>.

Move

After selecting an option above, click this button to complete the move.

Cancel

Press this button to ignore any selections and return to the previous dialog.

Select Directory

Use this dialog to select the default drive from the **Drives** drop-down list box and the default directory or directories from the **Directories** list box.

How to ...

Selecting with the Mouse

All selections discussed in this section are made with a single click of the left mouse button. For example the instruction, "select **Print Screen** from the **File** menu," implies that the following actions should be taken:

1. Move the mouse cursor over the word, **File**, on the menu bar.
2. Click the left mouse button once to reveal the menu.
3. Move the mouse cursor over the **Print Screen** selection.
4. Press the left mouse button again to complete the instruction.

Note: Left and right, mouse button actions may be reversed (run the **Mouse** icon/program in the Windows **Control Panel**).

Many of the menu selections also have corresponding buttons. These buttons are conveniently located on a toolbar immediately below the menu bar. These buttons represent the more frequently executed T27 eXpress Plus commands or selections.

Where appropriate, shortcut keys are shown in parentheses and toolbar buttons are shown in the right margin of the discussions below.

Tracing T27 eXpress Plus Host Sign-On Activity

If you are having difficulty connecting to the host, three "**Command Line**" options are available to collect a trace of the sign-on activity:

The **tw** option (e.g., c:\Program Files\KMSystems\T27Plus32\3.0\T27Plus32.exe" **tw**) will open a separate trace window where the host connection activity may be viewed.

The **tf** option will gather the activity to a file. Note: You will be prompted to enter the file name.

The **tb** option will trace the activity to both the trace window and the file.

Add the option to the **Target** entry of the **T27 eXpress Plus** shortcut as follows:

1. Right click on the **T27 eXpress Plus** icon. From the Windows Task Bar, this icon is on the **Start | Programs | T27 eXpress Plus** menu. For **T27 eXpress Net**, the icon may be on the desktop.
2. Select **Properties**.
3. Change the **Target** entry.

Running without the Control Panel

You may run T27 eXpress Plus without the control panel being visible using the NCP command line option as follows:

```
"c:\Program Files\KMSystems\T27Plus32\3.0\T27Plus32.exe" NCP
```

Note: The NCP option may not be set if you are running the network version of T27 eXpress Plus, T27 eXpress Net; however, the person responsible for maintaining T27 eXpress Net may configure your user id. to hide the control panel with an option in the **T27 eXpress Net Administrator** program.

To run with the NCP option, you must first run without it and configure at least one environment to automatically open at start-up. To configure:

1. Start T27 eXpress Plus without the NCP option.
2. Click the **Configure T27 eXpress Plus Options** button on the control panel.
3. Select and configure an environment as desired.
4. Check the **Open this Environment on Start-up**
5. Repeat Steps 3 and 4 if additional environments are required.
6. Click the **OK** button.
7. Click the **Exit** button on the control panel.

Finally, add the NCP command line option to the **Target** entry of the **T27 eXpress Plus** shortcut as follows:

1. Right click on the **T27 eXpress Plus** icon. From the Windows Task Bar, this icon is on the **Start | Programs | T27 eXpress Plus** menu. For **T27 eXpress Net**, the icon may be on the desktop.
2. Select **Properties**.

3. Change the **Target** entry.

Note: When all environments are closed by the user, T27 eXpress Plus will automatically exit.

Configuring T27 Keys

To change a T27 key, follow this procedure:

1. Click on the **Configure T27 eXpress Plus** button on the T27 eXpress Plus Control Panel.
2. After selecting a screen tab, press the **Custom Keyboards** button on the **Appearance and Keyboard** tab. The **eXpress Custom Keyboard Layouts** window will appear.
3. Select the keyboard layout you wish to configure from the **Keyboard Name** drop-down list box, or a new layout using the **New Keyboard** button to the right. Note: Layouts are related via a named keyboard and associated with a particular screen on the **Appearance and Keyboard** tab. In this manner, it is possible for each configured screen to have its own unique keyboard layout or share a layout with other screens.
4. Select a key from the list box under **Terminal Keys**.
5. Press the desired key or key combination (any key plus **Alt**, **Ctrl** and/or **Shift**) on the visual keyboard.
6. Press the **Set key assignment** button.
7. If a key is already defined, a message window will appear allowing you to replace (**Redefine**) the existing definition or **Add** an additional definition. Also, if a key combination is already assigned to another key action, you will get an error. In that case you will need to **"Undefine"** that other key action first.
8. Press the **OK** button on the **eXpress Custom Keyboard Layouts** window.
9. Back on the **Appearance and Keyboard** tab, select your keyboard from the Select Custom Keyboard Layout drop-down list box. Note: You may have to exit the Configuration window and re-enter to see the name of your keyboard in the list box.
10. Repeat steps 2 through 8 for each screen desired.
11. Press the **OK** button on the **T27 eXpress IT Configuration** window.

Creating a Toolbar Button to Run a Script

After developing and saving a script with the Script Editor, the script is saved with a .BAS extension, and optionally as a compiled file (.BAX), in the SCRIPTS directory. This script is then available to be placed on a screen's **Script** menu (see the T27 eXpress Plus Script Manager) and/or on a toolbar. The following procedure illustrates the steps required to associate a script with a toolbar button:

1. Click the **Configure T27 eXpress Plus** button on the T27 eXpress Control Panel.
2. After selecting a screen tab, press the **Custom Tool Bars** button on the **Appearance and Keyboard** tab. The **T27 eXpress Custom Toolbar Design** window will appear. Note: If you wish to create your own tool bar by adding to the default tool bar, select **Open Default Tool Bar** from the **File** menu. After making changes, you may do a **Save As** from the **File** menu. Note: Tool bars are related via a tool bar file and associated with a particular screen on the **Appearance and Keyboard** tab. In this manner, it is possible for each configured screen to have its own unique tool bar or share a tool bar with other screens.
3. Note: A blank button is present at the top of the window in the area titled, *Tool Bar Preview Area*.
4. With this "blank" button selected, type the word(s) for the button face in the **Button Caption** text box.
5. If the text entered will not fit on the button face, increase the button width or decrease the font size.
6. From the **Select Action** drop-down list box, choose the desired script (Note: They are all the way down, at the bottom of the list box).
7. Click the **Assign Action** button. Now, when the button is pressed on the screen's tool bar, the script will be executed.
8. To move the button to another part of the tool bar, use the move arrows.
9. Press the **Close** button on the **UTS eXpress Custom Tool Bar Design** window.
10. Click the **Select** button to the left of the **Custom Tool Bars** button to attach any custom tool bar to the selected screen.
11. Repeat 2 through 10 for each screen desired.
12. Press the **Close** button on the **T27 eXpress Custom Toolbar Design** window.

13. Press the **OK** button on the **T27 eXpress Plus Configuration** window.

Applying Colors and Fonts to a Specific Environment

You may change the appearance of the text displayed on the T27 eXpress Plus environment by selecting from a list of screen fonts installed on your system. Colors may be applied based on field attributes displayed in the environment. To change the screen's font and or color, follow this procedure:

1. Click the **Configure T27 eXpress Plus** button on the T27 eXpress Plus Control Panel.
2. After selecting a screen tab, click the **Custom Appearance** button on the **Appearance and Keyboard** tab.
3. Select a scheme name from the **Appearance Scheme Name** drop-down list box or press the **New Scheme** button and name a new scheme. Note: Colors and fonts are related via a scheme name and associated with a particular screen on the **Appearance and Keyboard** tab. In this manner, it is possible for each configured screen to have its own unique font and color scheme or share a scheme with other screens.
4. Select the desired font and font sty with the controls at the bottom of the window in the **Screen Font** group.
5. For color changes, select a field attribute from the option buttons in the **Select Color for Attribute** option group.
6. Next, select the foreground (text) and background colors from the two drop-down list boxes provided.
7. Repeat Steps 5 and 6 for each attribute required by your host application.
8. When done, click the OK button.
9. From the **Select Screen Appearance Scheme** drop-down list box, select the custom appearance scheme.
10. Repeat Steps 2 through 9 for each screen desired.
11. Press the **OK** button on the **T27 eXpress Plus Configuration** window.

Recall Recent Input

On occasion, you may wish recall or retransmit a line of input to the host, and that line no longer appears on the screen. T27 eXpress Plus retains a list of the 200 most recent lines sent to the host when not in forms mode. The following procedure outlines the steps required to use this feature:

1. Position the cursor at the point on the screen where you wish the line to be repainted.
2. Press **Ctrl+Up Arrow** (this key is configurable, see Configuring T27 Keys) or select **Input Recall** from the **Edit** window.
3. With the mouse, select the desired line from the list box provided.
4. Click the **Transmit** button to paint the line and transmit it to the host (double-clicking the line will also cause a transmit). If you wish to alter the line before transmitting, click on the **Paste** button.

Note: This feature is particularly useful when the recall line is lengthy and you wish to avoid having to retype the entire line.

Displaying T27 eXpress Plus Keyboard Definitions

At times, you may wish to perform standard T27 terminal functions through the keyboard such as ERASE TO END FIELD, TAB BACK, etc. An easy way to see the keyboard key sequences required to perform these T27 terminal functions is through the display of the **Keyboard Help** window. To view this window, select **Show Keyboard Help Window** from the **View** menu.

Double click on any entry (**T27 key** or **Keyboard Key Sequence**) in the window's list box to execute the T27 function, or leave the window displayed as a reference to key sequences required from the keyboard.

With the **Keyboard Window** displayed, you may reposition the cursor with a single left mouse click anywhere in a T27 eXpress Plus screen.

To keep the **Keyboard Help** window completely visible while working on a T27 eXpress Plus screen, check the **Stay on top** box.

Miscellaneous

Command Line Options

The following are the T27 command line options. They are NOT case sensitive and are separated by spaces:

- NL** = No Logo (Splash Screen)
- NCP** = No Control Panel
- SMAX** = Show Screens Maximized
- TRANSTRACE** = Transport Trace On Start
- MULTI_INST** = Allow multiple instances of program

Note: The NCP option may not be set if you are running the network version of T27 eXpress Plus, T27 eXpress Net; however, the person responsible for maintaining T27 eXpress Net may configure your user id. to hide the control panel with an option in the **T27 eXpress Net Administrator** program.

Font Limitations

The ability to increase/decrease font size by a single point only works properly when using scalable fonts like the True Type font, Courier New (installed with Windows). Non-scalable fonts have a fixed number of point sizes available (e.g., 6, 9, 11, 14, etc.) and are missing several point sizes (e.g., 7, 8, 10, 12, 13). Consequently, T27 eXpress Plus will be unable to increment/decrement to the missing sizes. To select a different font, follow this procedure:

1. Click on the **Configure T27 eXpress Plus** button on the T27 eXpress Plus Control Panel.
2. Select the desired screen tab.
3. Select the **Appearance and Keyboard** tab.
4. Select the desired font and font style.
5. Press the **OK** button.

Note: All of the True Type fonts are scalable.

Technical Support

If you are experiencing difficulties configuring T27 eXpress Plus and need assistance, please contact the person responsible for maintaining T27 eXpress Plus at your site. If you are having trouble connecting to a host mainframe, please consult the person(s) responsible for maintaining communications at your site. If difficulties persist, you may reach the Technical Support Group at KMSYS Worldwide, Inc., through one of the following:

Internet E-mail Support – support@kmsys.com
Telephone Support – (770) 635-6363
Web Site – www.kmsys.com
Main Number – (770) 635-6350
Facsimile – (770) 635-6351

Index

A	
Add LF to Return.....	7
Add or Redefine Key.....	26
Add to Menu.....	18
Advance Page.....	7
Allow Unique Settings for Each User of the Machine.....	32
Alternate Delimiters.....	7
Applying Colors and Fonts to a Specific Environment.....	37
Applying Colors and Fonts to aSpecific.....	37
Applying Colors and Fonts to Specific.....	37
Applying Colors and Fonts to Specific Screens.....	37
Auto Hide.....	1
Auto Scaling Mode.....	20
Automatic Field Advance.....	7
Auto-save Pages.....	7
B	
Beep Alarm Sound.....	7
Blinking Cursor.....	7
Button Action.....	27
Button Caption.....	27
C	
Change Script.....	18
Character Translation Configuration.....	29
Character Translation Edit.....	30
Clear Bitmap.....	27
Clear Entire Screen.....	7
Clear Fields Only.....	7
Clear Function.....	7
Clear Trace Window.....	1
Color Palette.....	20
Color Scheme Name.....	20
Color Settings.....	20
Colors.....	37
Command Line Options.....	39
Configuring T27 Keys.....	36
Control Panel.....	1
Convert CR to CRLF.....	7
Convert LF to LFCR.....	7
Copy/Cut/Paste popup menu.....	1
Creating a Toolbar Button to Run a Script.....	36
D	
DataComm Options.....	7
DC1 Function.....	7
DC2 Function.....	7
Decrease Vertical Spacing.....	1
Delete Scheme.....	20
Delete Script.....	18
Display.....	
Contents.....	1
FCC Map.....	1
T27 eXpress Plus toolbar.....	1
Displaying T27 eXpress Plus Keyboard Definitions.....	37
E	
Edit Caption.....	18
Edit Script.....	18
End Recording Script.....	1
Environments tab.....	7
eXpress Custom Keyboard Layouts.....	24
eXpress Custom Terminal Screen Appearance.....	20
eXpress Plus Script Manager.....	18
F	
FCC Map.....	1
File menu.....	1
Font.....	1
Resize Window.....	1
Font Adjustments toolbar.....	1
Font Limitations.....	39
Font Size.....	27
Fonts.....	37
Force ALL Users of This Machine to Use Same Settings.....	32
Forms Mode.....	7
G	
Graphic Keyboard.....	24
H	
Help menu.....	1
Hold in RCV Mode.....	7
I	
Increase Vertical Spacing.....	1
Initiate	
Select Sign-On Script.....	1
Input Recall.....	1
Insert Button.....	27
Insert Space in Insert Mode.....	7
International.....	7
K	
Keep on Top.....	1
Keyboard Layout.....	7
Keyboard Options.....	7
L	
Left Character (hex).....	7
Line Clear.....	7
Load Bitmap.....	27
Lock Config. Initial Password.....	31

M		
Minimize All	1	
Mouse	35	
Move Down	18	
Move Up	18	
N		
New Scheme	20	
New Script	18	
Numeric-Only	7	
O		
Open Default Toolbar.....	27	
Open This Environment on Start	7	
Options menu.....	1	
R		
Real Blink	7	
Recall Recent Input	37	
Recently Accessed Toolbar Files	27	
Remove Button.....	27	
Remove Menu.....	18	
Right Character (hex).....	7	
Right Justified is Numeric-Only	7	
Running without the Control Panel	35	
S		
Save Settings Now	1	
Save Settings on Exit	7, 20	
Screens	37	
Script Directory	18	
Script Manager	1, 18	
Script Menu Entries	18	
Scripts menu.....	1	
Select Action	27	
Select Automatic Sign-on Script.....	7	
Select Color for Attribute	20	
Select Color/Font Scheme	7	
Select Connection Route	7	
Select Directory	33	
Select Sign-On Script	1	
Select Tool Bar	7	
Selecting with the Mouse	35	
Send To	5	
Set Key Assignment.....	24	
Show Control Characters	1	
Show Toolbar	1	
SO/SI Extended Characters.....	7	
SO/SI Translation	7	
SOH Clears Forms Mode	7	
SOH Clears Screen.....	7	
Specify Sends Hex	7	
Specify Sends Page Number.....	7	
Start in UPPERCASE Only Mode	7	
Stay in RCV	7	
T		
T27.....	1	
T27 eXpress Custom Toolbar Design	27	
T27 eXpress Plus Configuration	7	
T27 eXpress Plus Configuration - Environments tab.....	7	
T27 eXpress Plus Control Panel.....	1	
T27 eXpress Plus Screen.....	1	
T27 eXpress Plus Settings.....	32	
Tab Stops	7	
Technical Support.....	39	
Terminal Keyboard Key Names.....	24	
Toggle Forms	7	
Toolbar Designer	7	
Trace	1	
Tracing T27 eXpress Plus Host Sign-On Activity	35	
Transmit Full Page in Forms Mode.....	7	
Transmit Line at a Time.....	7	
Type a Key Sequence	24	
U		
Unlock Config. Password.....	32	
UPPERCASE Only Mode.....	7	
V		
Video Options.....	7	
Visible Delimiters.....	7	
W		
Width.....	27	
Window menu	1	