



T27 eXpress Connect

8 May 2008

Table of Contents

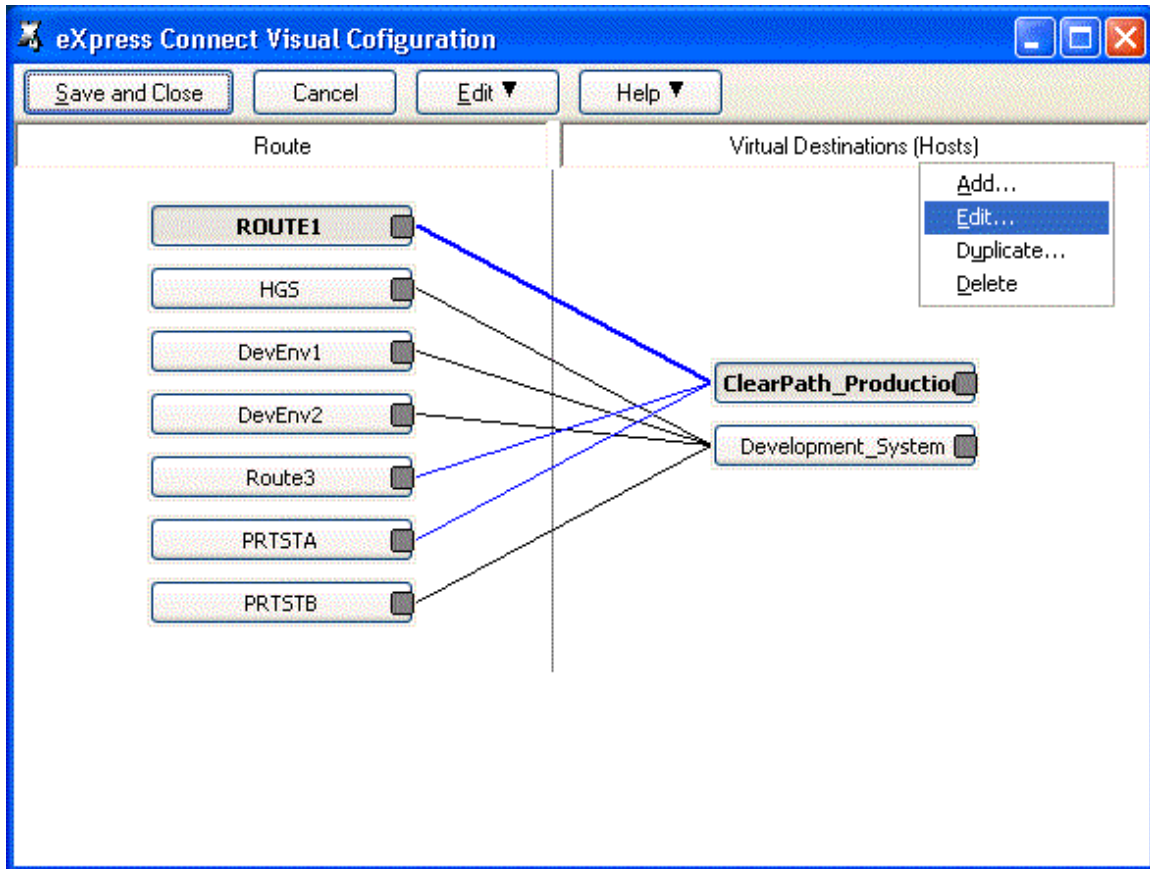
Configuration	1
eXpress Connect Visual Configuration	1
Mouse Actions	1
Buttons	2
Edit Route	3
Route Name	3
Station Name	3
Select Virt. Destination	3
Gateway Server Generated Station Name	3
HGS OpenId	3
Terminal Type	3
Rows	3
Columns	3
Pages	3
OK	3
Cancel	3
Related Topics	3
Edit Virtual Destination	3
Virtual Destination Ids.	4
IP Address	4
Edit IP Address	4
IP Port Id.	4
Connection Type	4
HGS Security Settings	4
OK	4
Cancel	4
Related Topics	4
New Route/Virtual Destination Name	4
Enter Unique Name	4
OK	4
Cancel	4
eXpress Connect T27 Settings	5
Delete Source Settings	5
Set	5
Cancel	5
Miscellaneous	7
Technical Support	7
Error Handling	7
Index	11

Configuration

eXpress Connect Visual Configuration

This window is used to control the overall operation of the configuration process and to configure routes to a host visually. The window contains a work area where routes and virtual destinations (hosts) may be easily linked together with the use of a mouse.

The work area is divided into two columns: one to configure routes and a second to configure virtual destinations. At the top of each column is an "Actions" button that, when pressed, will reveal a menu of actions for that specific column.



The following is a description of each mouse action and button:

Mouse Actions

Select an Existing Route or Virtual Destination

Use the left mouse button to select an existing route or virtual destination. After releasing the left mouse button, the selected route or virtual destination should be highlighted.

Note: The functions of left and right mouse button may be swapped by selecting the Mouse icon from the Windows Control Panel.

Edit an Existing Route or Virtual Destination

Double-click the left mouse button on an existing route or virtual destination to open the appropriate configuration dialog and edit the required parameters.

A click of the right mouse button over any existing route or virtual destination will select the item and reveal a pop-up menu of actions to maintain (Edit, Duplicate, etc.) the item.

Linking a Route or Virtual Destination

To link an existing route to a virtual destination, place the mouse cursor over the dark gray box on the right of the route button face. Next, while holding down the left mouse button, drag the mouse cursor over a virtual destination, and release the mouse button. A line will appear between the route and virtual destination showing that they are linked.

Buttons

Save and Close

This selection saves changes made to the configuration and exits the QPort TCP/IP Virtual Configuration routine.

Save

This selection saves changes made to the configuration but does not exit the configuration routine.

Cancel

This selection discards any changes made and exits the configuration routine. If changes have been made, a confirmation message will be issued allowing changes to be saved or discarded.

Print

This selection will print the eXpress Connect Visual Configuration window. The standard Windows **Print** dialog will appear allowing printer selection and property adjustments for the selected printer.

Edit

Pressing this button pops up a menu with the following selections:

Route Actions

Pressing this selection will reveal a pop-up menu of actions to maintain (Edit, Duplicate, etc.) routes.

Virtual Destination Actions

Pressing this selection will reveal a pop-up menu of actions to maintain (Edit, Duplicate, etc.) virtual destinations.

Sort All Lists

This selection will sort the routes and virtual destinations in alphabetical order on the visual configuration window.

Settings Location

The purpose of this feature is to allow all users of a single machine (Windows system) to use the same configuration settings for T27 eXpress Plus terminal emulator or QPort host connections, or both. By default, all settings are saved in files for the current user (C:\Documents and Settings\<<USER>>\Application Data\KMSystems\QPortT27_4.0\CONFIGURATION) which allows multiple users on the same machine to have their own individual settings.

In some cases, it may be desirable to have one set of configuration settings used by all users of the machine. One reason for common settings is so that the configuration settings can be done once for all users, instead of for each individual user; however, users should **NOT** be allowed to make configuration changes once they are set. There should only be one allowed to maintain the configuration. If common configuration settings are desired, they will be stored in common files (C:\Documents and Settings\All Users\Application Data\KMSystems\QPortT27_4.0\CONFIGURATION) and removed from current user.

The mechanism for creating common configuration settings in the T27 eXpress Plus terminal emulator is accessed from this dialog of the **T27 eXpress Plus Configuration** window. The eXpress Connect transport settings are accessed from the **Edit** menu in the **eXpress Connect Visual Configuration** window. Both the emulator and eXpress Connect transport settings are made common or by users, independent of one another. For example, eXpress Connect transport settings may be made common, while emulator settings remain by user.

The **Settings Location** feature is only available when **Use configuration lock options** is checked. Again, individual users should **NOT** be allowed to changes settings when the configuration settings are common to all users of the same machine.

Help

Pressing this button pops up a menu with the following selections:

Contents

This selection displays the help Contents tab for the eXpress Connect configuration program.

This Window

This selection displays the on-line help topic for this window.

Help, About

This selection displays the copyright information about the eXpress Connect Visual Configuration.

Route Actions

Pressing this selection will reveal a pop-up menu of actions to maintain (Edit, Duplicate, etc.) routes.

Virtual Dest. Actions

Pressing this selection will reveal a pop-up menu of actions to maintain (Edit, Duplicate, etc.) virtual destinations.

Edit Route

This dialog is used to define a potential route that will be connected via eXpress Connect.

Route Name

Route Name is used to link to a virtual destination on the eXpress Connect Visual Configuration window. One route must be configured for each environment that is to be connected.

Station Name

In this text box, enter a station name as configured in COMS on the mainframe. This name will be passed to the ClearPath MCP host.

Select Virt. Destination

From the drop-down list box, choose a configured virtual destination to which the route is to be linked.

Gateway Server Generated Station Name

Check this box if Host Gateway Server (HGS) is being used as a gateway and HGS will generate the station names.

This control is only visible for routes linked to a virtual destination with the KMSYS Host Gateway Server option selected.

HGS OpenId

Enter the open id to be referenced in the Host Gateway Server configuration.

This control is only visible for routes linked to a virtual destination with the KMSYS Host Gateway Server option selected.

Terminal Type

From this drop-down list box, choose the terminal type: TERMINAL or PRINTER.

Rows

In this box, enter the number of rows. The number of rows is limited to the range of 12 through 50. There will always be one more line for the status line. The default is 24.

Columns

In this box, enter the number of columns. Columns are limited to the range of 60 through 132. The default is 80.

Pages

In this text box, enter the number of pages in an environment. Pages may be in the range of 1 through 99. The default is 4.

OK

Click this button to accept changes made and close the window.

Cancel

Click this button to discard any changes made and close the window.

Related Topics

Virtual Destination Ids.

Edit Virtual Destination

This window is used to define a potential host and its connection type.

Virtual Destination Ids.

This is the name of the Virtual Destination being configured. It will be used to link to a route on the eXpress Connect Visual Configuration window.

IP Address

In this text box, enter an IP address (in "dotted" notation or symbolic destination machine name) of a host.

When using a Host Gate Server from KMSYS Worldwide, this is the IP Address of the server – not the host.

Edit IP Address

Click this button to edit the IP address of the destination. Use the context sensitive help provided for further assistance.

IP Port Id.

This is the IP port for your site (normally, 23). For SSL connections through Host Gateway Server (HGS) from KMSYS Worldwide, 992 is the accepted standard.

Connection Type

UNISYS (A-Series), UNIGATE (V-Series), Local (PCA) and KMSYS Host Gateway Server are currently the only supported connection types.

HGS Security Settings

For users of KMSYS Host Gateway Server (HGS), two check boxes are available to enable authentication and/or encryption. For these options to function, comparable options must be set in the HGS configuration program at the Interface level.

OK

Click this button to accept changes made and close the window.

Cancel

Click this button to discard any changes made and close the window.

Related Topics

Edit_Route

New Route/Virtual Destination Name

This window is used to assign a new Route Name or Virtual Destination when duplicating a Route or Virtual destination, respectively.

Enter Unique Name

In this text box, enter any meaningful name; however, the name must be unique. For example, if you are duplicating a route and a route called "ROUTE1" already exists, you must choose a different name.

OK

Click this button to accept changes made and close the window.

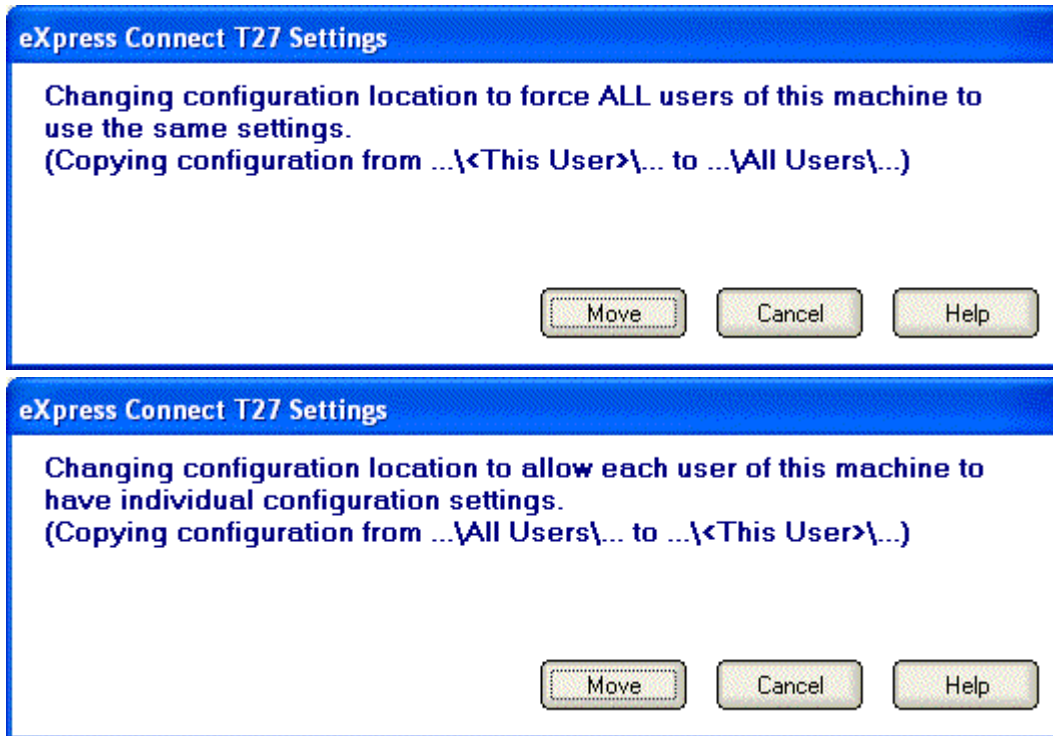
Cancel

Click this button to discard any changes made and close the window.

eXpress Connect T27 Settings

This dialog is used to switch the location of the eXpress Connect UTS transport settings. The settings may be stored in such a manner as to allow multiple users of a single Windows system to maintain their individual configurations. When individual configurations are to be maintained (the default), the settings are placed under C:\Documents and Settings\\Application Data. On the other hand, if it is desirable for all users of the system to use the same configuration, an option is available to move those settings to the common location, C:\Documents and Settings\All Users\Application Data.

Note: "<This User>" will be the user-id used to log on to Windows.



The dialog acts as a toggle between <This User> and All Users; i.e., if your settings are currently stored in <This User>, the message will indicate that they be moved to All Users; if they are in All Users, the move would be to <This User>.

Delete Source Settings

Check this box to delete the settings in their former location. If this box is not checked, the settings will remain in their old location but will NOT be used or updated in any way.

Set

After selecting an option above, click this button to complete the move.

Cancel

Press this button to ignore any selections and return to the previous dialog.

Miscellaneous

Technical Support

If you are experiencing difficulties configuring eXpress Connect or are experiencing run-time difficulties, please consult the person responsible for maintaining communications at your site for assistance. If difficulties persist, please contact the Technical Support Group at KMSYS Worldwide, Inc. Assistance may be obtained via the Internet at support@kmsys.com, facsimile at (770) 635-6351 or telephone at (770) 635-6363.

Error Handling

<u>WINSOCK Error</u>	<u>Explanation and Possible Action</u>
"[10004] Interrupted system call"	If this error occurs, please call KMSYS Worldwide for assistance.
"[10009] Bad file number"	If this error occurs, please call KMSYS Worldwide for assistance.
"[10013] Permission denied"	If this error occurs, please call KMSYS Worldwide for assistance.
"[10014] Bad address"	If this error occurs, please call KMSYS Worldwide for assistance.
"[10022] Invalid argument"	If this error occurs, please call KMSYS Worldwide for assistance.
"[10024] Too many open files"	If this error occurs, please call KMSYS Worldwide for assistance.
"[10035] Operation would block"	In the unlikely event this error occurs, please call KMSYS Worldwide for assistance.
"[10036] Operation now in progress"	In the unlikely event this error occurs, please call KMSYS Worldwide for assistance.
"[10037] Operation already in progress"	In the unlikely event this error occurs, please call KMSYS Worldwide for assistance.
"[10038] Socket operation on non-socket"	If this error occurs, please call KMSYS Worldwide for assistance.
"[10039] Destination address required"	If this error occurs, please call KMSYS Worldwide for assistance.
"[10040] Message too long"	If this error occurs, please call KMSYS Worldwide for assistance.
"[10041] Protocol wrong type for socket"	If this error occurs, please call KMSYS Worldwide for assistance.
"[10042] Bad protocol option"	If this error occurs, please call KMSYS Worldwide for assistance.
"[10043] Protocol not supported"	If this error occurs, please call KMSYS Worldwide for assistance.
"[10044] Socket type not supported"	If this error occurs, please call KMSYS Worldwide for assistance.
"[10045] Operation not supported on socket"	If this error occurs, please call KMSYS Worldwide for assistance.
"[10046] Protocol family not supported"	If this error occurs, please call KMSYS Worldwide for assistance.
"[10047] Address family not supported by protocol family"	If this error occurs, please call KMSYS Worldwide for assistance.
"[10048] Address already in use"	IP Address conflict on network or stack. Seek assistance from your network administrator.
"[10049] Can't assign requested address"	IP Address conflict on network or stack. Seek assistance from your network administrator.
"[10050] Network is down"	Problem with TCP/IP network or stack. If eXpress Connect has been working, wait awhile. If eXpress

WINSOCK ErrorExplanation and Possible Action

	Connect has <i>not</i> been working, seek assistance from your network administrator.
"[10051] Network is unreachable"	Problem with TCP/IP network or stack. If eXpress Connect has been working, wait awhile. If eXpress Connect has <i>not</i> been working, seek assistance from your network administrator.
"[10052] Net dropped connection or reset"	Problem with TCP/IP network or stack. If eXpress Connect has been working, wait awhile. If eXpress Connect has <i>not</i> been working, seek assistance from your network administrator.
"[10053] Software caused connection abort"	If this error occurs, please call KMSYS Worldwide for assistance.
"[10054] Connection reset by peer"	In the unlikely event this error occurs, please call KMSYS Worldwide for assistance.
"[10055] No buffer space available"	Quit all Windows applications, exit Windows and reboot your PC.
"[10056] Socket is already connected"	If this error occurs, please call KMSYS Worldwide for assistance.
"[10057] Socket is not connected"	If this error occurs, please call KMSYS Worldwide for assistance.
"[10058] Can't send after socket shutdown"	If this error occurs, please call KMSYS Worldwide for assistance.
"[10059] Too many references, can't splice"	If this error occurs, please call KMSYS Worldwide for assistance.
"[10060] Connection timed out"	If this error occurs, try shutting down Windows and perform a hard boot (reset button or power-off/power-on) of your PC. If the problem persists, please call KMSYS Worldwide for assistance.
"[10061] Connection refused"	If this error occurs, please call KMSYS Worldwide for assistance.
"[10062] Too many levels of symbolic links"	If this error occurs, please call KMSYS Worldwide for assistance.
"[10063] File name too long"	If this error occurs, please call KMSYS Worldwide for assistance.
"[10064] Host is down"	Remote system is not responding.
"[10065] No Route to Host"	There is no Route to remote system. Check address and router address.
"[10066] Directory not empty"	If this error occurs, please call KMSYS Worldwide for assistance.
"[10067] Too many processes"	If this error occurs, please call KMSYS Worldwide for assistance.
"[10068] Too many users"	If this error occurs, please call KMSYS Worldwide for assistance.
"[10069] Disc Quota Exceeded"	If this error occurs, please call KMSYS Worldwide for assistance.
"[10070] Stale NFS file handle"	If this error occurs, please call KMSYS Worldwide for assistance.
"[10071] Too many levels of remote in path"	If this error occurs, please call KMSYS Worldwide for assistance.
"[10091] Network SubSystem is unavailable"	If this error occurs, please call KMSYS Worldwide for assistance.
"[10092] WINSOCK DLL Version out of range"	WINSOCK must be version 1.1 or higher. Contact your WINSOCK vendor for a new version.
"[10093] Successful WSASTARTUP not yet performed"	If this error occurs, please call KMSYS Worldwide for assistance.

WINSOCK Error

Explanation and Possible Action

"[11001] Host not found"

If this error occurs, please call KMSYS Worldwide for assistance.

"[11002] Non-Authoritative Host not found"

If this error occurs, please call KMSYS Worldwide for assistance.

"[11003] Non-Recoverable
Error_Handling: FORMERR, REFUSED,
NOTIMP"

If this error occurs, please call KMSYS Worldwide for assistance.

"[11004] Valid name, no data record
of requested type"

If this error occurs, please call KMSYS Worldwide for assistance.

Index

A

addressStreetEdit Route3
Auto Open.....3
Aux Dids3

C

Connect Type3

E

Edit Virtual Destination3
Error Handling7
eXpress Connect T27 Settings5
eXpress Connect Visual Configuration1

I

IP Address3

M

Module3

N

New Route/Virtual Destination Name..... 4

R

Route 3

S

Station Name3
Support7

T

Technical Support7
Terminal Device Information3

V

Virtual Destination Ids.....3
Visual Configuration1